

**Arran-Elderslie Water Works  
13-028**

**2021 Operation and Maintenance  
Annual Report  
January 2021**



**Prepared for:  
Municipality of Arran-Elderslie  
P.O. Box 70, 1925 Bruce Road 10  
Chesley, ON N0G 1L0**

**Prepared By:  
GSS Engineering Consultants Ltd.  
Unit 104D, 1010 – 9<sup>th</sup> Ave, W.  
Owen Sound, ON  
N4K 5R7**

# TABLE OF CONTENTS

1.0	INTRODUCTION AND BACKGROUND .....	1
2.0	DESCRIPTION OF WATER SYSTEM.....	2
3.0	SUMMARY OF WATER QUALITY MONITORING .....	4
3.1	WATER TREATMENT EQUIPMENT OPERATION AND MONITORING.....	4
3.1.1	POINT OF ENTRY CHLORINE RESIDUAL.....	4
3.1.2	DISTRIBUTION CHLORINE RESIDUAL.....	4
3.1.3	TURBIDITY.....	4
3.2	MICROBIOLOGICAL SAMPLING .....	4
3.2.1	DISTRIBUTION SYSTEM.....	4
3.2.2	RAW WATER SAMPLES.....	5
3.2.3	TREATED WATER (POINT OF ENTRY) SAMPLES.....	5
3.3	CHEMICAL SAMPLING & TESTING AS PER SCHEDULE 13,O. REG. 170/03...	5
3.3.1	INORGANICS.....	5
3.3.2	LEAD .....	6
3.3.3	ORGANICS .....	6
3.3.4	TRICHALOMETHANES and halo acetic acid .....	6
3.3.5	NITRATE & NITRITE .....	6
3.3.6	SODIUM .....	7
3.3.7	FLUORIDE .....	7
3.4	FILTER BACKWASH TREATED EFFLUENT .....	7
4.0	WATER USAGE.....	8
4.1	WATER SUPPLY TO THE PAISLEY STANDPIPE.....	8
5.0	IMPROVEMENTS TO THE SYSTEM AND ROUTINE AND PREVENTATIVE MAINTENANCE .....	9
6.0	MINISTRY OF THE ENVIRONMENT, CONSERVATION AND PARKS (MECP) INSPECTIONS AND REGULATORY ISSUES .....	11
7.0	SUMMARY OF 2022 REQUIREMENTS AND OTHER CONSIDERATIONS .....	12

## **LIST OF TABLES**

TABLE 1	SUMMARY OF WATER QUALITY – FREE CHLORINE (POE)
TABLE 2	SUMMARY OF WATER QUALITY – FREE CHLORINE (DISTRIBUTION)
TABLE 3	SUMMARY OF WATER QUALITY – TURBIDITY (POE)
TABLE 4	SUMMARY OF TRIHALOMETHANES AND HALO ACETIC ACID
TABLE 5	SUMMARY OF TREATED WATER FLOW
TABLE 6	RATED CAPACITY UTILIZATION
TABLE 7	SUMMARY OF DISINFECTANT CHEMICALS USED – WTP
TABLE 8	SUMMARY OF CHEMICALS USED – DISTRIBUTION SYSTEM
TABLE 9	SUMMARY OF WATER QUALITY - MICROBIOLOGICAL

## **APPENDICES**

APPENDIX A	MICROBIOLOGICAL SAMPLING AND ANALYSIS (TABLE 9)
APPENDIX B	MONTHLY, QUARTERLY AND ANNUAL SAMPLING AND ANALYSIS
APPENDIX C	MUNICIPAL DRINKING WATER LICENCE AND DRINKING WATER WORKS PERMIT
APPENDIX D	WATER METER CALIBRATION
APPENDIX E	MECP INSPECTION REPORT
APPENDIX F	PERMIT TO TAKE WATER

## 1.0 INTRODUCTION AND BACKGROUND

The purpose of the 2021 Annual Compliance Report is to document the operation and maintenance data for the Arran-Elderslie Water Works for review by the Ministry of the Environment, Conservation and Parks (MECP) in accordance with O. Reg. 170/03. The drinking water system is categorized as a large municipal residential system.

The Arran-Elderslie Water Treatment Plant was operated by Mr. Mark O'Leary, back-up Overall Responsible Operator (ORO), Water/Sewer Foreman, who has a Class II Water Treatment and Class III Water Distribution Certificate; Mr. Chris Legge, who has a Class II Water Distribution Certificate along with his Class I Water Treatment Certificate; Mr. Trevor Sweiger, who holds a Class I Water Distribution and a Class I Water Treatment Certificate; and Mr. Ben Overeem, who is an Operator in Training (OIT). Rakesh Sharma, P. Eng., who has a Class IV Certificate for Water Treatment and Class IV Certificate for Water Distribution is the Overall Responsible Operator (ORO) and Scott McLeod, who has a Class II Certificate for Water Treatment and Class IV Certificate for Water Distribution is the backup ORO. The Arran-Elderslie WTP is classified as Water Treatment Subsystem Class 1. The Arran-Elderslie distribution system (Chesley distribution system, Chesley to Paisley trunk watermain and the Paisley distribution system) is classified as a Water Distribution subsystem Class 3).

The operating authority for the plant is:

Municipality of Arran-Elderslie  
P.O. Box 170, 1925 County Road #10  
Chesley, Ontario  
N0G 1L0  
Telephone: 519-363-3039  
Fax: 519-363-2203

ORO service is provided by:

GSS Engineering Consultants Ltd.  
Unit 104D, 1010 9<sup>th</sup> Ave. W.  
Owen Sound, ON  
N4K 5R7  
Telephone: 519-372-4828

Water Works Permit #	079-202 Issue 5	Issued Jan 08/2021
Water Works License #	079-102 Issue 4	Issued Jan 08/2021
Permit to Take Water	# 3655-A3RPJL	Issued Nov13/2015

## **2.0 DESCRIPTION OF WATER SYSTEM**

The Arran-Elderslie Water Treatment Plant comprises of the following:

### **Community Park Well (CPW1)**

- 340 mm dia., 20 m deep drilled groundwater well known as the Community Park Well #1, located in Lot 32, Concession 2, (UTM Zone 17, 4906102; 4904691N).
- The well is provided with a new pitless adaptor and
- A submersible well pump rated at 20.82 L/s at a TDH of 80.96 m and raw water piping routed to the treatment plant.
- Existing CPW1 was not utilized in 2021 due to the presence of iron-oxidizing bacteria. Arran-Elderslie is considering replacing this well with a new well to draw water from the same aquifer.

### **Community Park Well (CPW2)**

- A 324 mm dia., 24.38 m deep drilled groundwater Community Park Well CPW2 (UTM Zone 17, 492828 m E., 4904726 m N.) equipped with a submersible well pump rated at 24.61 L/s at a TDH of 80.12m, pitless adaptor, and all necessary raw water piping routed to the treatment plant.

### **Community Park Well (CPW3)**

- A 254 mm dia., 38.1 m deep drilled groundwater Community Park Well CPW3 (UTM Zone 17, 493123 m E., 4904783 m N) equipped with a submersible well pump rated at 34.07 L/s at a TDH of 96.43 m, pitless adaptor and all necessary raw water piping routed to the treatment plant.

### **Chesley Standpipe**

- A 2,725 m<sup>3</sup> capacity concrete water storage tank is located at the north end of Chesley on Tower Road. It has an operating capacity of 1,360 m<sup>3</sup> between the minimum and maximum operating water elevations, designed for peak hour water demand equalization, fire and emergency storage.

### **Paisley Standpipe**

- The Paisley Standpipe has a capacity of 2,430 m<sup>3</sup>. Modifications to the Paisley standpipe performed in 2006 allows the water to enter the standpipe at approximately 2/3 of the standpipe height and discharge into the Paisley distribution system from the bottom of the standpipe.

### **Booster Chlorination at the Paisley Standpipe**

- Two (2) (1+1) chlorine feed pumps rated at a minimum of 1.4 L/h and one (1) 200 L sodium hypochlorite solution tank with a secondary containment tank.

### **Trunk Watermain**

- There is approximately 15.7 km of 300 mm watermain connecting the Chesley water distribution system to the Paisley standpipe complete with all associated valving and metering.

### **Arran-Elderslie Water Treatment Plant in Chesley**

- The Arran-Elderslie Water Treatment Plant was commissioned in May 2006. The Plant treats the raw water supply from all three (3) Community Parks Wells. It includes three (3) pressure filtration vessels (2 duty, 1 standby) for iron/manganese removal, an unbaffled two (2) cell, filtered water groundwater storage tank for storage of water for backwashing of the filters, two (2) filter backwash pumps, a sodium hypochlorite feed system and three (3) storage tanks, post chlorination system, one (1) backwash wastewater holding tank and all associated instrumentation and analyzers including a SCADA system.

Refer to **Appendix C** for the Municipal Drinking License and the Drinking Water Works Permit.

### **3.0 SUMMARY OF WATER QUALITY MONITORING**

#### **3.1 WATER TREATMENT EQUIPMENT OPERATION AND MONITORING**

##### **3.1.1 POINT OF ENTRY CHLORINE RESIDUAL**

In 2021, Point of Entry (POE) treated water samples were collected and analyzed for Free Chlorine Residual by way of on-line analyzer. **Table 1** shows the minimum-maximum monthly range of free chlorine residual values. All free Chlorine residuals from the Arran-Elderslie Water Treatment Plant were greater than 0.28 mg/L and met CT criteria of 2 log inactivation of virus for plant flows.

The alarm set point is 0.64 mg/L, which is for flow contributed by Well 1, 2 and 3. As per CT calculations, the free chlorine residual concentration must be 0.48 mg/L or higher to treat flows matching rated capacity (64.4 L/sec) of the plant. However, if only one or two wells are operating, minimum chlorine that must be maintained is lower.

##### **3.1.2 DISTRIBUTION CHLORINE RESIDUAL**

In 2021, a Total of 365 grab samples were collected in the Chesley distribution system. Chlorine residual was monitored on-line at Paisley Water tower. **Table 2** shows that all free chlorine distribution samples were well above 0.05 mg/L threshold in Chesley distribution system as well as at Paisley Water Tower.

##### **3.1.3 TURBIDITY**

The Ontario Drinking Water Quality Standards (ODWQS) have set a Maximum Acceptable Concentration of 5.0 NTU for treated water in the distribution system.

The POE treated water turbidity was measured by an on-line turbidity analyzer. The raw water and distribution grab samples were also collected weekly and analyzed for turbidity.

**Table 3** provides a summary of POE turbidity results.

#### **3.2 MICROBIOLOGICAL SAMPLING**

##### **3.2.1 DISTRIBUTION SYSTEM**

Schedule 10 of Ontario Regulation 170/03 requires that at least eleven (11) distribution samples be collected monthly and tested for E. coli, Total Coliform and 25% of samples for Heterotrophic Plate Count (HPC). In 2021, a total of 137 distribution samples were collected and analyzed for E. Coli and Total Coliform. 80 Samples were collected and analyzed for HPC. Refer to **Appendix**

**TABLE 1**  
**Summary of Treated Water Quality – Free Chlorine (POE)**  
**Arran-Elderslie Water Treatment Plant**  
**January 1, 2021 to December 31, 2021**

<b>Month</b>	<b># of Samples</b>	<b>Min.</b>	<b>Max.</b>
January	31	0.75	1.93
February	28	0.49	1.83
March	31	0.28	1.73
April	30	0.85	1.75
May	31	0.75	1.79
June	30	0.60	2.00
July	31	0.67	1.62
August	31	0.54	1.60
September	30	0.66	1.44
October	31	0.70	1.77
November	30	0.72	1.57
December	31	0.24	1.75

Note: Analysis results were recorded by on-line analyzer

**TABLE 2**  
**Summary of Water Quality – Free Chlorine (Distribution)**  
**Arran-Elderslie Water Treatment Plant**  
**January 1, 2021 to December 31, 2021**

<b>Month</b>	<b>Chesley Distribution System (mg/L)</b>			<b>Paisley Water Tower (mg/L)</b>		
	<b># of Samples</b>	<b>Min.</b>	<b>Max.</b>	<b># of Samples</b>	<b>Min.</b>	<b>Max.</b>
January	31	0.36	1.15	31	0.92	1.33
February	28	0.45	1.25	28	1.1	1.42
March	31	0.49	1.30	31	1.13	1.26
April	30	0.42	1.37	30	1.16	1.34
May	31	0.33	1.36	31	0.91	1.39
June	30	0.43	1.13	30	0.94	1.29
July	31	0.50	1.09	31	0.92	1.35
August	31	0.30	1.23	31	0.83	1.17
September	30	0.30	1.16	30	0.87	1.09
October	31	0.31	1.29	31	0.89	1.09
November	30	0.32	1.24	30	0.88	1.11
December	31	0.28	1.24	31	1.06	1.31
<b>Total</b>	<b>365</b>			<b>365</b>		
<b>MIN</b>		<b>0.30</b>			<b>0.83</b>	
<b>MAX</b>			<b>1.37</b>			<b>1.42</b>

**TABLE 3**  
**Summary of Water Quality – Turbidity (POE)**  
**Arran-Elderslie Water Treatment Plant**  
**January 1, 2021 to December 31, 2021**

<b>Month</b>	<b># of Samples</b>	<b>Max.</b>
January	31	2.00*
February	28	0.20
March	31	0.52
April	30	2.00*
May	31	2.00*
June	30	2.00*
July	31	0.08
August	31	2.00*
September	30	0.08
October	31	0.05
November	30	2.00*
December	31	0.12

\* High reading was due to air containment in the sample lines.

**A (Table 9)** for weekly microbiological results. All results were within compliance except August 9<sup>th</sup> sample, when a TC count of 2 was reported in a sample collected from Paisley. MECP and Health Unit were notified in accordance with Protocol for Adverse Water Quality Incidences. Samples were taken again on August 11<sup>th</sup>, with TC count returning to 0. The highest HPC count was >2000 count from the November 1<sup>st</sup> sample. HPC is indicative of overall water quality of drinking water. However, this incidence appears to be an isolated case as samples before and after this incidence had low HPC count.

### **3.2.2 RAW WATER SAMPLES**

Schedule 10 of Ontario Regulation 170/03 requires that at least one (1) raw water sample be collected weekly and analyzed for Total Coliform and E. coli. In 2021, 52 samples were collected from each of wells No., 2 and 3 and analyzed.

24 samples were collected for Well #1 until the week of June 14<sup>th</sup>, following which Arran-Elderslie stopped using the well due to the presence of iron-oxidizing bacteria. A new well is currently being planned to be constructed to draw water from the same aquifer.

Refer to **Appendix A (Table 9)** for a complete summary of the annual microbiological water quality.

### **3.2.3 TREATED WATER (POINT OF ENTRY) SAMPLES**

Schedule 10 of Ontario Regulation 170/03 requires that at least one (1) treated water sample be collected weekly from the Point of Entry and analyzed for Total Coliform, E. coli and HPC. A total of 52 treated water samples were collected and all were found to be safe. None of the samples had high HPC Count. Refer to **Appendix A (Table 9)** for microbiological sampling and analysis results.

## **3.3 CHEMICAL SAMPLING & TESTING AS PER SCHEDULE 13, O. REG. 170/03**

### **3.3.1 INORGANICS**

Schedule 13-2 of Ontario Regulation 170/03 requires that at least one (1) water sample is taken every 36 months, if the system obtains water from a groundwater supply that has been deemed non-GUDI. The samples for the Arran-Elderslie Water Treatment Plant were collected on November 15, 2021 and submitted to the laboratory for analysis of inorganics as listed in Schedule 13. All parameters were found to be within compliance. Inorganics are required to be sampled and analyzed again on or before November 2024.

### 3.3.2 LEAD

Schedule 15.1 of Ontario Regulation 399/07 requires that samples be taken at various sampling points, twice a year: once between December 15 and April 15 and once between June 15<sup>th</sup> and October 15<sup>th</sup>. Per 2020 annual performance report recommendations, lead was not tested for the Arran-Elderslie treatment plant as there were no lead concerns for two consecutive testing periods as described by Schedule 15.1-5 (9). The water system is on reduced sampling and accordingly two (2) Alkalinity samples were taken in February and September. The lab reports are included in **Appendix B**.

### 3.3.3 ORGANICS

Schedule 13-4 of Ontario Regulation 170/03 requires that at least one (1) water sample is taken every 36 months if the system obtains water from a groundwater supply that has been deemed non-GUDI. The samples were collected and received by lab on November 15, 2021. All parameters were found to be within compliance. Organics are required to be sampled and analyzed again on or before November 2024.

### 3.3.4 TRIHALOMETHANES AND HALO ACETIC ACID

Schedule 13-6 of Ontario Regulation 170/03 requires that at least one (1) distribution sample is taken every three (3) months from a point in the distribution system and tested for Trihalomethanes (THMs) and Halo Acetic Acid (HAA). In 2021, samples were collected during the months of February, May, August and November. The Ontario Drinking Water Quality Standard (ODWQS) have set a Maximum Allowable Concentration (MAC) of 100 µg/L for THM and it is expressed as a running annual average. In 2021, the average THM was found to be 23.5 µg/L, in Chesley and 23.3 µg/L in Paisley which is within compliance. Average HAA was 7.2 µg/L in Chesley and 6.4 µg/L in Paisley. Refer to **Table 4** for the Summary of Trihalomethanes and Halo Acetic Acids and **Appendix B** for analytical results. In 2022, samples should be collected in February, May, August and November.

### 3.3.5 NITRATE & NITRITE

Schedule 13-7 of Ontario Regulation 170/03 requires that at least one (1) water sample is taken every three (3) months and tested for nitrate and nitrite. Samples were collected during the months of February, May, August and November. The analytical results were found to be within compliance. Refer to **Appendix B**. In 2022, samples should be collected in February, May, August and November.

**Table 4**

**Summary of Trihalomethanes (THMs) and**

**Halo Acetic Acid (HAA)**

**Arran-Elderslie Water Treatment Plant**

**January 1, 2021 – December 31, 2021**

Sample Date	Chesley (µg/L)		Paisley (µg/L)	
	(THM)	(HAA)	(THM)	(HAA)
February 2021	24	5.3	19	9.6
May 2021	17	5.3	21	5.3
August 2021	27	5.3	29	5.3
November 2021	26	12.9	24	5.3
Average	23.5	7.2	23.3	6.4
MAC (µg/L)	100	80 (µg/L)	100	80 (µg/L)

### **3.3.6 SODIUM**

Schedule 13-8 of Ontario Regulation 170/03 requires that at least one (1) water sample is collected every 60 months and tested for Sodium. The Ontario Drinking Water Standards (ODWQS) have set a Maximum Acceptable Concentration (MAC) of 200 mg/L for Sodium and requires the Medical Office of Health be notified if the concentration exceeds 20 mg/L. These samples were collected on November 3, 2019 and were found to be 16.1 mg/L at CP Well #1 & 2 and 12.5 mg/L at CP Well #3, which are below 20 mg/L. The water sample for Sodium needs to be collected and analyzed on or before November 3, 2024.

### **3.3.7 FLUORIDE**

Schedule 13-9 of Ontario Regulation 170/03 requires that a water sample be collected at least once in every 60 months and tested for Fluoride. The Ontario Drinking Water Quality Standards (ODWQS) have set a MAC of 1.5 mg/L. On November 3, 2019, samples were collected for this analysis. The samples were found to have a concentration of 0.41 mg/L at CP Well #1 & 2 and 0.72 mg/L at CP Well #3, which is within compliance. The water sample for Fluoride needs to be collected and analyzed on or before November 3, 2024.

## **3.4 FILTER BACKWASH TREATED EFFLUENT**

The license requires a backwash effluent sample to be collected monthly and analyzed for Total Suspended Solids (TSS) when decant effluent is discharged to the Saugeen River. The criteria limit is 25 mg/L. The samples were collected monthly from January to December, except for February as the tank was offline for maintenance. The monthly TSS results were 5, 4, 2, 2, 7, 2, 2, 4, 4, 2, and 3 for an average of 3.4 mg/L which is well within the limits.

Dechlorination of decant was undertaken by employing Formula 2156. An annual average dosage of 2.42 mg/L was utilized. The dechlorination chemical annual usage was 28.0 L.

## 4.0 WATER USAGE

The treated water quantity supplied to the distribution system in 2021 is summarized in **Table 5**. The Table provides a breakdown of the monthly flow provided to the distribution system. In 2021, the water works operated at 27.2% of the plants Rated Capacity. Refer to **Table 6** for comparison with previous years. Capacity utilization is slightly lower than previous years, except for Year 2017, when a similar lower utilization of 25.8% was experienced.

From January 1, 2021 to December 31, 2021, approx. 4,919 litres of sodium hypochlorite (NaOCl) was used to treat the water that was provided to the distribution system with an average dosage of 1.85 mg/L. Refer to **Table 7**.

**Table 7** also provides a summary of monthly water usage from each of the municipal wells.

Flow meters were calibrated in April 2021 by Flowmetrix Technical Services Inc. and were found to be acceptable. Refer to **Appendix D** for the calibration reports summary sheet.

The full calibration report is available in municipal records. The water meters should be calibrated again by April 2022.

### 4.1 WATER SUPPLY TO THE PAISLEY STANDPIPE

During 2021, a total of 115,700 m<sup>3</sup> of treated water was provided to the Paisley distribution system by way of the gravity trunk watermain. The flows were recorded by a flow meter installed on the trunk watermain. Refer to **Table 8**.

The average day demand to the Paisley distribution system was 317 m<sup>3</sup>/day (304 m<sup>3</sup>/day in 2020, 279 m<sup>3</sup>/day in 2019, and 298 m<sup>3</sup>/day in 2018) and the maximum day demand was 616 m<sup>3</sup>/day (693 m<sup>3</sup>/day in 2020, 703 m<sup>3</sup>/day in 2019, and 498 m<sup>3</sup>/day in 2018). The maximum day demand occurred on May 5<sup>th</sup>, 2021.

**Table 8** provides a summary of disinfectant chemical used for the booster chlorination of water supplied to Paisley water system from the Paisley water tower. The average chemical dosage is also indicated in the table.

**Table 5**  
**Summary of Treated Water Flow**  
**Municipality of Arran-Elderslie**  
**Arran-Elderslie Water Treatment Plant**  
**January 1, 2021 to December 31, 2021**

<b>Month</b>	<b>Treated Flow (m<sup>3</sup>)</b>		
	<b>Total</b>	<b>Average Daily</b>	<b>Daily Maximum</b>
January	23,570	760	858
February	23,723	847	1,007
March	26,013	839	988
April	27,478	916	1,512
May	31,843	1,027	1,493
June	31,261	1,042	1,291
July	27,848	898	1,089
August	28,388	944	1,064
September	25,600	853	970
October	26,802	865	1,028
November	23,249	775	866
December	24,128	801	1,029
<b>Annual</b>	<b>319,903</b>	<b>881</b>	<b>1,512</b>

**Table 6**  
**Rated Capacity Utilization**  
**Arran-Elderslie Water Works**  
**Municipality of Arran-Elderslie**

<b>Year</b>	<b>Max Day (m<sup>3</sup>/day)</b>	<b>% Rated Capacity</b>
2021	1,512	27.2%
2020	1,820	32.7%
2019	1,765	31.7%
2018	1,778	32.0%
2017	1,436	25.8%
2016	1,905	34.2%
2015	1,851	33.3%
2014	1,862	33.5%
2013	1,720	30.9%
2012	1,939	34.8%
<b>Rated Capacity of Water Works</b>		<b>5,564 m<sup>3</sup>/day</b>

**TABLE 7**  
**Summary of Disinfectant Chemical Used and Raw Water Supply From Each Well**  
**Arran-Elderslie Water Treatment Plant**  
**January 1, 2021 to December 31, 2021**

Month	Volume of Sodium Hypochlorite Used (L)	Average Chlorine Dosage (mg/L)	Raw Water Supply from Wells			
			CPW1 (m³)	CPW2 (m³)	CPW3 (m³)	Total (m³)
January	355.5	2.13	7,657	9,232	7,147	24,036
February	326.5	1.93	5,417	9,637	9,307	24,361
March	360.0	1.94	5,254	10,425	11,046	26,725
April	391.6	2.00	6,589	10,816	10,789	28,194
May	466.7	2.06	9,078	11,827	11,722	32,627
June	394.8	1.77	5,235	12,311	14,570	32,116
July	321.1	1.61	0	15,961	12,755	28,716
August	331.1	1.63	0	16,550	12,702	29,252
September	322.2	1.76	0	14,538	11,821	26,359
October	329.4	1.72	0	15,202	12,377	27,579
November	299.0	1.80	0	12,390	11,527	23,917
December	324.2	1.88	0	13,025	11,807	24,832
<b>Total</b>	<b>4,222</b>	<b>1.85</b>	<b>39,230</b>	<b>151,914</b>	<b>137,570</b>	<b>328,714</b>

\* Note that the volume of Sodium Hypochlorite used was calculated assuming a 12% diluted solution with 1200kg/m³ density

**TABLE 8**

**Summary of Disinfectant Chemical Used  
At Booster Chlorination Station, Paisley  
Municipality of Arran-Elderslie  
January 1, 2021 to December 31, 2021**

<b>Month</b>	<b>Sodium Hypochlorite</b>	<b>Flow to Paisley Water Tower</b>
	<b>Average Dosage (mg/L)</b>	<b>(m³)</b>
January	0.46	8,670
February	0.42	9,610
March	0.45	10,702
April	0.46	9,156
May	0.39	11,667
June	0.39	10,513
July	0.39	9,757
August	0.41	9,820
September	0.48	9,173
October	0.52	9,984
November	0.54	8,097
December	0.52	8,551
<b>Total</b>	-	<b>115,700</b>
<b>Average</b>	<b>0.45</b>	<b>9,642</b>

## **5.0 IMPROVEMENTS TO THE SYSTEM AND ROUTINE AND PREVENTATIVE MAINTENANCE**

### **5.1 January:**

- Replaced lines on turbidity meter (TMS 561) and chlorine analyzer (Depolox). Replaced line from lab to chlorine analyzer panel.
- Completed routine cleaning of clear well #1. Scrubbed floors, and chlorinated walls and floor.

### **5.2 February:**

- Removed and replaced foot valve on chlorine feed pump #5.
- Removed and replaced ¼" tubing on degassing solenoid for all 5 chlorine feed pumps.
- Completed routine cleaning of clear well #2. Scrubbed floors, and chlorinated walls and floor.
- Cleaned and tested chlorine injection points CIP #3, #4, #5, #6.
- Replaced generator oil, oil filter, and fuel filter after 277.7 operation hours.
- Removed and replaced diaphragm and discharge valve on chlorine feed pump #4.

### **5.3 March:**

- Removed and replaced degassing relay inside chlorine feed pump #1.
- Filters #1 and #2 inspected by Napier Ried for performance review.

### **5.4 April:**

- Flowmeters calibrated by Tower Electronics Canada
- Replaced light source in turbidity meter.

### **5.5 June:**

- Removed and replaced desiccant pack on turbidity meter.

### **5.7 August:**

- Removed and degassing relay inside chlorine feed pump #4.
- Removed and replaced pressure reducing valve on chlorine feed pump #5.

### **5.8 September:**

- Removed and replaced foot valve on chlorine feed pump #1.
- Copper service at 48 4<sup>th</sup> Ave SW was damaged by Aecon. Installed a curb stop as a repair.

**5.9 November:**

- Inspected flat roof of water treatment plant and found no concerns. Cleaned out roof drains.
- Replaced curb stop box at 48 4<sup>th</sup> Ave SW and 105 1<sup>st</sup> Ave N.
- Replaced curb stop and box at 268 3<sup>rd</sup> Ave SE.

**5.10 December:**

- Replaced curb stop box at 17 1<sup>st</sup> Ave N.
- Cleaned and tested chlorine injection points CIP #3, #4, #5 and #6.
- Removed and replaced solenoid for valve on chlorine feed pump #4.
- Cleaned and tested all pipeline air relief valves.
- Calibrated chlorine feed pumps #1, #2, #3, #4, and #5.

## **6.0 MINISTRY OF THE ENVIRONMENT, CONSERVATION AND PARKS (MECP) INSPECTIONS AND REGULATORY ISSUES**

The Ministry of Environment Conservation and Parks (MECP) inspection occurred on June 17, 2021 and provided an inspection report. There were no items in “Non-compliance with Regulatory Requirements” section of the report.

Refer to **Appendix E** for the Inspection Report.

An Adverse Water Quality Incident occurred when a sample from August 9, 2021 had a TC count of 2. AWQI protocol was utilized and issue was resolved by way of resampling and Sch 16 Report, dated August 11, 2021.

## **7.0 SUMMARY OF 2022 REQUIREMENTS AND OTHER CONSIDERATIONS**

1. During 2022, eleven (11) distribution samples should be collected every month from the distribution system and analyzed for Total Coliform, E. Coli.
2. During 2022, one (1) raw water sample should be collected from each production well every week and analyzed for Total Coliform and E. coli.
3. During 2022, a microbiological sample should be collected from the Point of Entry every week and analyzed for Total Coliform, E. Coli and HPC.
4. Inorganics as listed in Schedule 23 are required to be sampled and analyzed on or before November 2024.
5. Lead sampling is not required in 2022 due to no lead issues in water supply. Alkalinity test is to be completed in the Fall.
6. Organics, as listed in Schedule 24, are required to be sampled and analyzed on or before November 2024.
7. During 2022, Trihalomethanes and Halo Acetic Acid (HAA) samples should be collected from the Arran-Elderslie and Paisley distribution systems every three (3) months, starting in February.
8. During 2022, Nitrite and Nitrate samples are to be collected from the Arran-Elderslie Water Treatment Plant Point of Entry every three (3) months, starting in February.
9. Sodium and Fluoride must be sampled and analyzed on or before November, 2024.
10. A composite sample of treated backwash water must be collected once a month and analyzed for Total Suspended Solids.
11. The Operation and Maintenance Manual should be reviewed with all staff who will be working in the subsystem and updated when required.
12. Renewal of the Permit to Take Water is required prior to September 22, 2025.

13. All water meters are to be calibrated by April 2022.
14. The diesel generator should be test run under full load on a monthly basis and the test results documented.
15. All alarms are to be tested on a yearly basis and the test results documented.
16. By March 31, 2022 Arran-Elderslie need to electronically submit the 2021 "Volume of Water Taking Daily" to the MECP.

Respectfully submitted:

GSS Engineering Consultants Ltd.



Rakesh Sharma, P. Eng., M.A.Sc.  
Operator, Class IV WT, Class IV WD

Municipality of Arran-Elderslie

Mark O'Leary  
Water/Sewer Foreman  
Operator, Class II WT & Class III WD  
Backup ORO

Municipality of Arran-Elderslie



Scott McLeod, Public Works Manager  
Class II WT & Class IV WD,  
Backup ORO

## **APPENDIX A**

### **MICROBIOLOGICAL SAMPLING AND ANALYSIS**

JANUARY 1, 2021 to DECEMBER 31, 2021

Date Rec	Well #	Raw		Point of Entry (POE)			Distribution		
		E.Coli	Total Coliform	E. Coli	Total Coliform	HPC	E. Coli	Total Coliform	HPC
JAN 04	Well #1	0	0	0	0	<10	0	0	<10
	Well #2	0	0				0	0	<10
	Well #3	0	0				0	0	<10
							0	0	<10
JAN 11	Well #1	0	0	0	0	<10	0	0	<10
	Well #2	0	0				0	0	<10
	Well #3	0	0				0	0	<10
JAN 18	Well #1	0	0	0	0	<10	0	0	
	Well #2	0	0				0	0	
	Well #3	0	0						
JAN 25	Well #1	0	0	0	0	<10	0	0	
	Well #2	0	0				0	0	
	Well #3	0	0						
FEB 01	Well #1	0	0	0	0	<10	0	0	<10
	Well #2	0	0				0	0	<10
	Well #3	0	0				0	0	<10
							0	0	<10
FEB 08	Well #1	0	0	0	0	<10	0	0	
	Well #2	0	0				0	0	
	Well #3	0	0				0	0	
FEB 16	Well #1	0	0	0	0	<10	0	0	
	Well #2	0	0				0	0	
	Well #3	0	0						
FEB 22	Well #1	0	0	0	0	<10	0	0	10
	Well #2	0	0				0	0	<10
	Well #3	0	0						
MAR 01	Well #1	0	0	0	0	<10	0	0	10
	Well #2	0	0				0	0	<10
	Well #3	0	0				0	0	<10
MAR 08	Well #1	0	0	0	0	<10	0	0	10
	Well #2	0	0				0	0	<10
	Well #3	0	0						
MAR 15	Well #1	0	0	0	0	<10	0	0	
	Well #2	0	0				0	0	
	Well #3	0	0						
MAR 22	Well #1	0	0	0	0	<10	0	0	<10
	Well #2	0	0				0	0	
	Well #3	0	0						
MAR 29	Well #1	0	0	0	0	<10	0	0	
	Well #2	0	0				0	0	
	Well #3	0	0						
APR 06	Well #1	0	0	0	0	<10	0	0	<10
	Well #2	0	0				0	0	<10
	Well #3	0	0				0	0	<10
							0	0	<10
APR 12	Well #1	0	0	0	0	10	0	0	<10
	Well #2	0	0				0	0	<10
	Well #3	0	0				0	0	<10

Table # 9  
SUMMARY OF WATER QUALITY - MICROBIOLOGICAL  
MUNICIPALITY OF ARRAN-ELDERSLIE  
ARRAN-ELDERSLIE WATER SUPPLY  
JANUARY 1, 2021 to DECEMBER 31, 2021

Date Rec	Well #	Raw		Point of Entry (POE)			Distribution		
		E.Coli	Total Coliform	E. Coli	Total Coliform	HPC	E. Coli	Total Coliform	HPC
APR 19	Well #1	0	0	0	0	<10	0	0	<10
	Well #2	0	0				0	0	<10
	Well #3	0	0						
APR 26	Well #1	0	0	0	0	<10	0	0	
	Well #2	0	0				0	0	
	Well #3	0	0						
MAY 03	Well #1	0	0	0	0	<10	0	0	
	Well #2	0	0				0	0	
	Well #3	0	0				0	0	
MAY 10	Well #1	0	0	0	0	<10	0	0	<10
	Well #2	0	0				0	0	<10
	Well #3	0	0						
MAY 17	Well #1	0	0	0	0	<10	0	0	<10
	Well #2	0	0				0	0	<10
	Well #3	0	0						
MAY 25	Well #1	0	0	0	0	<10	0	0	<10
	Well #2	0	0				0	0	<10
	Well #3	0	0						
MAY 31	Well #1	0	0	0	0	<10	0	0	<10
	Well #2	0	0				0	0	<10
	Well #3	0	0						
JUN 07	Well #1	0	0	0	0	<10	0	0	<10
	Well #2	0	0				0	0	<10
	Well #3	0	0				0	0	<10
JUN 14	Well #1	0	0	0	0	<10	0	0	10
	Well #2	0	0				0	0	<10
	Well #3	0	0				0	0	<10
JUN 21	Well #1			0	0	<10	0	0	
	Well #2	0	0				0	0	
	Well #3	0	0				0	0	
JUN 28	Well #1			0	0	<10	0	0	
	Well #2	0	0				0	0	
	Well #3	0	0						
JUL 05	Well #1			0	0	<10	0	0	
	Well #2	0	0				0	0	
	Well #3	0	0				0	0	
JUL 12	Well #1			0	0	<10	0	0	<10
	Well #2	0	0				0	0	<10
	Well #3	0	0				0	0	<10
JUL 19	Well #1			0	0	<10	0	0	<10
	Well #2	0	0				0	0	<10
	Well #3	0	0				0	0	<10
JUL 26	Well #1			0	0	<10	0	0	
	Well #2	0	0				0	0	
	Well #3	0	0						

Table # 9  
SUMMARY OF WATER QUALITY - MICROBIOLOGICAL  
MUNICIPALITY OF ARRAN-ELDERSLIE  
ARRAN-ELDERSLIE WATER SUPPLY  
JANUARY 1, 2021 to DECEMBER 31, 2021

Date Rec	Well #	Raw		Point of Entry (POE)			Distribution		
		E.Coli	Total Coliform	E. Coli	Total Coliform	HPC	E. Coli	Total Coliform	HPC
AUG 03	Well #1			0	0	<10	0	0	
	Well #2	0	0				0	0	
	Well #3	0	0				0	0	
AUG 09	Well #1			0	0	<10	0	2	<10
	Well #2	0	0				0	0	<10
	Well #3	0	0						
AUG 11 (Re-Samples)	Well #1						0	0	
	Well #2						0	0	
	Well #3						0	0	
AUG 16	Well #1			0	0	<10	0	0	<10
	Well #2	0	0				0	0	<10
	Well #3	0	0						
AUG 23	Well #1			0	0	10	0	0	
	Well #2	0	0				0	0	
	Well #3	0	0						
AUG 30	Well #1			0	0	<10	0	0	<10
	Well #2	0	0				0	0	10
	Well #3	0	0						
SEPT 07	Well #1			0	0	<10	0	0	<10
	Well #2	0	0				0	0	<10
	Well #3	0	0				0	0	<10
SEPT 13	Well #1			0	0	<10	0	0	<10
	Well #2	0	0				0	0	10
	Well #3	0	0				0	0	<10
SEPT 20	Well #1			0	0	<10	0	0	
	Well #2	0	0				0	0	
	Well #3	0	0				0	0	
SEPT 27	Well #1			0	0	<10	0	0	
	Well #2	0	0				0	0	
	Well #3	0	0						
OCT 04	Well #1			0	0	<10	0	0	<10
	Well #2	0	0				0	0	<10
	Well #3	0	0				0	0	<10
OCT 12	Well #1			0	0	<10	0	0	<10
	Well #2	0	0				0	0	<10
	Well #3	0	0				0	0	<10
OCT 18	Well #1			0	0	<10	0	0	
	Well #2	0	0				0	0	
	Well #3	0	0						
OCT 25	Well #1			0	0	<10	0	0	
	Well #2	0	0				0	0	
	Well #3	0	0						
NOV 01	Well #1			0	0	<10	0	0	>2000
	Well #2	0	0				0	0	<10
	Well #3	0	0				0	0	<10
NOV 08	Well #1			0	0	<10	0	0	<10
	Well #2	0	0				0	0	10
	Well #3	0	0						
NOV 15	Well #1			0	0	<10	0	0	
	Well #2	0	0				0	0	
	Well #3	0	0						

Table # 9  
SUMMARY OF WATER QUALITY - MICROBIOLOGICAL  
MUNICIPALITY OF ARRAN-ELDERSLIE  
ARRAN-ELDERSLIE WATER SUPPLY  
JANUARY 1, 2021 to DECEMBER 31, 2021

Date Rec	Well #	Raw		Point of Entry (POE)			Distribution		
		E.Coli	Total Coliform	E. Coli	Total Coliform	HPC	E. Coli	Total Coliform	HPC
NOV 22	Well #1			0	0	<10	0	0	
	Well #2	0	0				0	0	
	Well #3	0	0						
NOV 29	Well #1			0	0	<10	0	0	
	Well #2	0	0				0	0	
	Well #3	0	0						
DEC 06	Well #1			0	0	<10	0	0	<10
	Well #2	0	0				0	0	<10
	Well #3	0	0				0	0	<10
							0	0	<10
DEC 13	Well #1			0	0	<10	0	0	<10
	Well #2	0	0				0	0	<10
	Well #3	0	0				0	0	<10
DEC 20	Well #1			0	0	10	0	0	
	Well #2	0	0				0	0	
	Well #3	0	0						
DEC 29	Well #1			0	0	<10	0	0	
	Well #2	0	0				0	0	
	Well #3	0	0						
DEC 30	Well #1								
	Well #2	0	0						
	Well #3	0	0						
Total of Samples		130	130	52	52	52	137	137	80

**APPENDIX B**

MONTHLY, QUARTERLY, AND ANNUAL SAMPLING  
AND ANALYSIS



**SGS Canada Inc.**

P.O. Box 4300 - 185 Concession St.  
Lakefield - Ontario - K0L 2H0  
Phone: 705-652-2000 FAX: 705-652-6365

**Feb 08 - Nitrate, HAA, THM**

**Works #:** 220002725

**Mun of Arran Elderslie (Arran-Elderslie Supply)**

**Attn : Mark O'Leary**

1925-10 Bruce Rd, PO Box 70  
Chesley, ON  
N0G 1L0, Canada

Phone: 519-363-3039 ext:122  
Fax:519-363-9337

**16-February-2021**

**Date Rec. :** 08 February 2021  
**LR Report:** CA30128-FEB21

**Copy:** #1

## CERTIFICATE OF ANALYSIS

### Final Report

Analysis	1: Analysis Start Date	2: Analysis Start Time	3: Analysis Completed Date	4: Analysis Completed Time	5: MAC	8: MDL	9: TW Community Park Well #1 & 2 Acquifer	10: TW Community Park Well #3 Acquifer	11: DW Distribution-Admin Office	12: DW Distribution-Paisley Sewage Plant	13: DW Distribution-Water Plant Domestic	14: DW Distribution-Paisley Water Tower
Sample Date & Time							08-Feb-21 06:50	08-Feb-21 07:50	08-Feb-21 09:20	08-Feb-21 09:15	08-Feb-21 07:30	08-Feb-21 08:45
Temperature upon Delivery [ @ London Lab °C]	---	---	---	---	---	---	13.1	13.1	13.1	13.1	13.1	13.1
Temperature Upon Receipt [at Lakefield Lab °C]	---	---	---	---	---	---	5.0	5.0	5.0	5.0	5.0	5.0
Field Total Chlorine [mg/L]	---	---	---	---	---	---	1.10	1.19	0.68	1.23	0.93	1.40
Field Free Chlorine [mg/L]	---	---	---	---	---	---	0.84	1.17	0.63	1.19	0.91	1.29
Nitrite (as N) [mg/L]	10-Feb-21	20:26	12-Feb-21	14:52	1.0	0.003	0.003 <MDL	0.003 <MDL	---	---	---	---
Nitrate (as N) [mg/L]	10-Feb-21	20:26	12-Feb-21	14:52	10	0.006	0.753	1.64	---	---	---	---
Nitrate + Nitrite (as N) [mg/L]	10-Feb-21	20:26	12-Feb-21	14:52	---	0.006	0.753	1.64	---	---	---	---
Trihalomethanes (total) [ug/L]	10-Feb-21	13:17	11-Feb-21	11:32	100 (RAA)	0.37	---	---	24	19	---	---
Bromodichloromethane [ug/L]	10-Feb-21	13:17	11-Feb-21	11:32	--	0.26	---	---	6.6	5.6	---	---
Bromoform [ug/L]	10-Feb-21	13:17	11-Feb-21	11:32	--	0.34	---	---	0.34 <MDL	0.34 <MDL	---	---
Chloroform [ug/L]	10-Feb-21	13:17	11-Feb-21	11:32	--	0.29	---	---	14	11	---	---
Dibromochloromethane [ug/L]	10-Feb-21	13:17	11-Feb-21	11:32	--	0.37	---	---	2.9	2.5	---	---
Total Haloacetic Acids (HAA5) [ug/L]	11-Feb-21	16:40	16-Feb-21	09:24	80 (RAA)	5.3	---	---	---	---	5.3 <MDL	9.6
Chloroacetic Acid [ug/L]	11-Feb-21	16:40	16-Feb-21	09:24	---	4.7	---	---	---	---	4.7 <MDL	4.7 <MDL
Bromoacetic Acid [ug/L]	11-Feb-21	16:40	16-Feb-21	09:24	---	2.9	---	---	---	---	2.9 <MDL	2.9 <MDL
Dichloroacetic Acid [ug/L]	11-Feb-21	16:40	16-Feb-21	09:24	---	2.6	---	---	---	---	2.9	4.3
Dibromoacetic Acid [ug/L]	11-Feb-21	16:40	16-Feb-21	09:24	---	2.0	---	---	---	---	2.0 <MDL	2.0 <MDL
Trichloroacetic Acid [ug/L]	11-Feb-21	16:40	16-Feb-21	09:24	---	5.3	---	---	---	---	5.3 <MDL	5.4

MAC - Maximum Acceptable Concentration  
MDL - SGS Method Detection Limit



SGS Canada Inc.

P.O. Box 4300 - 185 Concession St.

Lakefield - Ontario - KOL 2H0

Phone: 705-652-2000 FAX: 705-652-6365

Works #: 220002725

LR Report : CA30128-FEB21

## Method Descriptions

Units	Description	SGS Method Code
ug/L	HAA wtr - DW	ME-CA-[ENV]GC-LAK-AN-013
ug/L	VOC wtr - THM	ME-CA-[ENV]GC-LAK-AN-004
ug/L	VOC wtr - THM	ME-CA-[ENV]GC-LAK-AN-004
ug/L	HAA wtr - DW	ME-CA-[ENV]GC-LAK-AN-013
ug/L	VOC wtr - THM	ME-CA-[ENV]GC-LAK-AN-004
ug/L	HAA wtr - DW	ME-CA-[ENV]GC-LAK-AN-013
ug/L	VOC wtr - THM	ME-CA-[ENV]GC-LAK-AN-004
ug/L	HAA wtr - DW	ME-CA-[ENV]GC-LAK-AN-013
mg/L	Nitrate by Ion Chromatography	ME-CA-[ENV]IC-LAK-AN-001
mg/L	Total Nitrate/Nitrite by Ion Chromatograph	ME-CA-[ENV]IC-LAK-AN-001
mg/L	Nitrite by Ion Chromatography	ME-CA-[ENV]IC-LAK-AN-001
ug/L	HAA wtr - DW	ME-CA-[ENV]GC-LAK-AN-013
ug/L	HAA wtr - DW	ME-CA-[ENV]GC-LAK-AN-013
ug/L	VOC wtr - THM	ME-CA-[ENV]GC-LAK-AN-004

Carrie Greenlaw  
Project Specialist,  
Environment, Health & Safety



Works #: 220002725

**SGS Canada Inc.**

P.O. Box 4300 - 185 Concession St.  
Lakefield - Ontario - K0L 2H0  
Phone: 705-652-2000 FAX: 705-652-6365

**Feb 16 - Alkalinity**

19-February-2021

**Mun of Arran Elderslie (Arran-Elderslie Supply)**

Attn : Mark O'Leary

Date Rec. : 16 February 2021  
LR Report: CA30246-FEB21

1925-10 Bruce Rd, PO Box 70  
Chesley, ON  
N0G 1L0, Canada

Copy: #1

Phone: 519-363-3039 ext:122  
Fax:519-363-9337

## CERTIFICATE OF ANALYSIS

### Final Report

Sample ID	Sample Date & Time	Temperature upon Delivery @ London Lab °C	Field pH	Alkalinity mg/L as CaCO <sub>3</sub>
1: Analysis Start Date		---	---	18-Feb-21
2: Analysis Start Time		---	---	14:37
3: Analysis Completed Date		---	---	19-Feb-21
4: Analysis Completed Time		---	---	12:00
6: AO/OG		---	6.5-8.5	30-500
7: MDL		---	---	2
8: DW Sink Chesley Blower Room 230 4th St SW	16-Feb-21 09:15	11.8	7.31	261
9: DW Sink Bruce County Shop-242 Canrobert St (Paisley)	16-Feb-21 09:35	11.8	7.26	266

AO/OG - Aesthetic Objective / Operational Guideline  
MDL - SGS Method Detection Limit

### Method Descriptions

Units	Description	SGS Method Code
mg/L as CaCO <sub>3</sub>	Alkalinity by Titration	ME-CA-[ENV]EWL-LAK-AN-006

  
Carrie Greenlaw  
Project Specialist,  
Environment, Health & Safety



SGS Canada Inc.  
P.O. Box 4300 - 185 Concession St.  
Lakefield - Ontario - K0L 2H0  
Phone: 705-652-2000 FAX: 705-652-6365

**Mun of Arran Elderslie (Arran-Elderslie Supply)**  
Attn : Mark O'Leary

1925-10 Bruce Rd, PO Box 70  
Chesley, ON  
N0G 1L0, Canada

Phone: 519-363-3039 ext:122  
Fax:519-363-9337



Works #: 220002725

24-May-2019

Date Rec. : 13 May 2019  
LR Report: CA30104-MAY19

Copy: #1

May 13 - Nitrate, HAA, THM

## CERTIFICATE OF ANALYSIS

### Final Report

Analysis	1: Analysis Start Date	2: Analysis Start Time	3: Analysis Completed Date	4: Analysis Completed Time	5: MAC	6: MDL	7: TW Community Well #1 & 2 Acquirer	8: TW Community Park Well #3 Acquirer	9: DW Distribution Admin Office	10: DW Distribution Paisley North End	11: DW Distribution Arran East	12: DW Distribution Paisley Arena
Sample Date & Time												
Temperature Upon Receipt [°C]	---	---	---	---	---	---	8	8	8	8	8	8
Field Total Chlorine [mg/L]	---	---	---	---	---	---	1.30	1.20	0.77	1.04	1.06	1.06
Field Free Chlorine [mg/L]	---	---	---	---	---	---	1.01	1.11	0.70	0.97	1.01	0.91
Nitrite (as N) [mg/L]	15-May-19	19:45	21-May-19	12:03	1.0	0.003	0.003 <MDL	0.003 <MDL	---	---	---	---
Nitrate (as N) [mg/L]	15-May-19	19:45	21-May-19	12:03	10	0.006	0.953	1.79	---	---	---	---
Nitrate + Nitrite (as N) [mg/L]	15-May-19	19:45	21-May-19	12:03	---	0.006	0.953	1.79	---	---	---	---
Trihalomethanes (total) [ug/L]	16-May-19	16:46	21-May-19	11:03	100 (RAA)	0.37	---	---	16	16	---	---
Bromodichloromethane [ug/L]	16-May-19	16:46	21-May-19	11:03	---	0.26	---	---	4.8	5.1	---	---
Bromoform [ug/L]	16-May-19	16:46	21-May-19	11:03	---	0.34	---	---	0.37	0.34 <MDL	---	---
Chloroform [ug/L]	16-May-19	16:46	21-May-19	11:03	---	0.37	---	---	8.2	2.7	---	---
Dibromochloromethane [ug/L]	16-May-19	16:46	21-May-19	11:03	---	5.3	---	---	2.7	---	---	---
Total Haloacetic Acids (HAA5) [ug/L]	18-May-19	06:53	24-May-19	14:44	---	4.7	---	---	---	---	5.3 <MDL	5.3 <MDL
Chloroacetic Acid [ug/L]	18-May-19	06:53	24-May-19	14:44	---	2.9	---	---	---	---	4.7 <MDL	4.7 <MDL
Bromoacetic Acid [ug/L]	18-May-19	06:53	24-May-19	14:44	---	2.6	---	---	---	---	2.9 <MDL	2.9 <MDL
Dichloroacetic Acid [ug/L]	18-May-19	06:53	24-May-19	14:44	---	2.0	---	---	---	---	2.6 <MDL	4.3
Dibromoacetic Acid [ug/L]	18-May-19	06:53	24-May-19	14:44	---	5.3	---	---	---	---	2.0 <MDL	2.0 <MDL
Trichloroacetic Acid [ug/L]	18-May-19	06:53	24-May-19	14:44	---	5.3	---	---	---	---	5.3 <MDL	5.3 <MDL

MAC - Maximum Acceptable Concentration  
MDL - SGS Method Detection Limit




SGS Canada Inc.  
P.O. Box 4300 - 185 Concession St.  
Lakefield - Ontario - K0L 2H0  
Phone: 705-652-2000 FAX: 705-652-6365

Works #: 220002725  
LR Report : CA30104-MAY19

## Method Descriptions

Units	Description	SGS Method Code
ug/L	HAA wtr - DW	ME-CA-IENVJGC-LAK-AN-013
ug/L	VOC wtr - THM	ME-CA-IENVJGC-LAK-AN-004
ug/L	VOC wtr - THM	ME-CA-IENVJGC-LAK-AN-004
ug/L	HAA wtr - DW	ME-CA-IENVJGC-LAK-AN-013
ug/L	VOC wtr - THM	ME-CA-IENVJGC-LAK-AN-004
ug/L	HAA wtr - DW	ME-CA-IENVJGC-LAK-AN-013
ug/L	VOC wtr - THM	ME-CA-IENVJGC-LAK-AN-004
ug/L	HAA wtr - DW	ME-CA-IENVJGC-LAK-AN-013
mg/L	Nitrate by Ion Chromatography	ME-CA-IENVJGC-LAK-AN-001
mg/L	Total Nitrate/Nitrite by Ion Chromatography	ME-CA-IENVJGC-LAK-AN-001
mg/L	Nitrite by Ion Chromatography	ME-CA-IENVJGC-LAK-AN-001
ug/L	HAA wtr - DW	ME-CA-IENVJGC-LAK-AN-013
ug/L	HAA wtr - DW	ME-CA-IENVJGC-LAK-AN-013
ug/L	VOC wtr - THM	ME-CA-IENVJGC-LAK-AN-004

  
Carrie Greenlaw  
Project Specialist,  
Environment, Health & Safety



SGS Canada Inc.  
P.O. Box 4300 - 185 Concession St.  
Lakefield - Ontario - K0L 2H0  
Phone: 705-652-2000 FAX: 705-652-6365

**Mun of Arran Elderslie (Arran-Elderslie Supply)**

Attn : Mark O'Leary

1925-10 Bruce Rd, PO Box 70  
Chesley, ON  
N0G 1L0, Canada

Phone: 519-363-3039 ext:122  
Fax: 519-363-9337

Works #: 220002725

30-August-2021

Date Rec. : 23 August 2021  
LR Report: CA30450-AUG21

Copy: #1



## CERTIFICATE OF ANALYSIS

### Final Report

Analysis	1: Analysis Start Date	2: Analysis Start Time	3: Analysis Completed Date	4: Analysis Completed Time	5: MAC	8: MDL	9: TW Community Park Well #1 & 2 Acquirer	10: TW Community Park Well #3 Acquirer	11: Distribution-North End	12: Distribution-Paisley Sewage Plant	13: Distribution-Water Domestic	14: Distribution-Paisley Water Tower
Sample Date & Time							23-Aug-21 07:30	23-Aug-21 08:40	23-Aug-21 08:25	23-Aug-21 11:00	23-Aug-21 08:35	23-Aug-21 09:40
Temperature upon Delivery [at London Lab °C]							8.3	8.3	8.3	8.3	8.3	8.3
Temperature Upon Receipt [at Lakefield Lab °C]							20.0	20.0	20.0	20.0	20.0	20.0
Field Total Chlorine [mg/L]							1.08	0.98	0.63	0.78	0.69	1.13
Field Free Chlorine [mg/L]							0.96	0.91	0.57	0.77	0.61	1.09
Nitrite (as N) [mg/L]	25-Aug-21	16:32	27-Aug-21	07:22	1.0	0.003	0.003 <MDL	0.003 <MDL				
Nitrate (as N) [mg/L]	25-Aug-21	16:32	27-Aug-21	07:22	10	0.006	0.654	1.19				
Nitrate + Nitrite (as N) [mg/L]	25-Aug-21	16:32	27-Aug-21	07:22		0.006	0.654	1.19				
Trihalomethanes (total) [ug/L]	26-Aug-21	19:42	30-Aug-21	14:47	100 (RAA)	0.37			27	29		
Bromodichloromethane [ug/L]	26-Aug-21	19:42	30-Aug-21	14:47		0.26			7.6	8.4		
Bromoform [ug/L]	26-Aug-21	19:42	30-Aug-21	14:47		0.34			0.34 <MDL	0.34 <MDL		
Chloroform [ug/L]	26-Aug-21	19:42	30-Aug-21	14:47		0.29			16	17		
Dibromochloromethane [ug/L]	26-Aug-21	19:42	30-Aug-21	14:47		0.37			3.5	3.9		
Total Haloacetic Acids (HAA5) [ug/L]	25-Aug-21	15:15	30-Aug-21	15:02	80 (RAA)	5.3					12.9	5.3 <MDL
Chloroacetic Acid [ug/L]	25-Aug-21	15:15	30-Aug-21	15:02		4.7					4.7 <MDL	4.7 <MDL
Bromoacetic Acid [ug/L]	25-Aug-21	15:15	30-Aug-21	15:02		2.9					2.9 <MDL	2.9 <MDL
Dichloroacetic Acid [ug/L]	25-Aug-21	15:15	30-Aug-21	15:02		2.6					6.6	4.6
Dibromoacetic Acid [ug/L]	25-Aug-21	15:15	30-Aug-21	15:02		2.0					2.0 <MDL	2.0 <MDL
Trichloroacetic Acid [ug/L]	25-Aug-21	15:15	30-Aug-21	15:02		5.3					6.3	5.3 <MDL

MAC - Maximum Acceptable Concentration  
MDL - SGS Method Detection Limit

Online LIMS

Aug 23 - Nitrate, HAA, THM



Works #: 220002725

**SGS Canada Inc.**

P.O. Box 4300 - 185 Concession St.  
Lakefield - Ontario - K0L 2H0  
Phone: 705-652-2000 FAX: 705-652-6365

Sept 27 - Alkalinity

30-September-2021

**Mun of Arran Elderslie (Arran-Elderslie Supply)**

Attn : Mark O'Leary

1925-10 Bruce Rd, PO Box 70  
Chesley, ON  
N0G 1L0, Canada

Phone: 519-363-3039 ext:122  
Fax:519-363-9337

Date Rec. : 27 September 2021  
LR Report: CA30507-SEP21

Copy: #1

## CERTIFICATE OF ANALYSIS

### Final Report

Sample ID	Sample Date & Time	Temperature upon Delivery @ London Lab °C	Temperature Upon Receipt at Lakefield Lab °C	Field pH no unit	Alkalinity mg/L as CaCO <sub>3</sub>
1: Analysis Start Date		---	---	---	29-Sep-21
2: Analysis Start Time		---	---	---	15:20
3: Analysis Completed Date		---	---	---	30-Sep-21
4: Analysis Completed Time		---	---	---	14:03
5: AO/OG		---	---	6.5-8.5	30-500
6: MDL		---	---	---	2
7: DW Sample Tap 1 Riverside Dr 1st	27-Sep-21 09:55	11.3	11.0	7.04	261
8: DW Sample Tap 416 Inkerman St 1st	27-Sep-21 09:40	11.3	11.0	7.46	249

AO/OG - Aesthetic Objective / Operational Guideline  
MDL - SGS Method Detection Limit

#### Method Descriptions

Parameter	Description	SGS Method Code
Alkalinity	Alkalinity by Titration	ME-CA-[ENV]EWL-LAK-AN-006

Hawley Anderson, Hon.B.Sc  
Project Specialist Assistant,  
Environment, Health & Safety

# NOV 15 - NITRATES, INORGANICS, ORGANICS



SGS Canada Inc.  
P.O. Box 4300 - 185 Concession St.  
Lakefield - Ontario - K0L 2H0  
Phone: 705-652-2000 FAX: 705-652-6365

**Mun of Arran Elderslie (Arran-Elderslie Supply)**  
Attn : Mark O'Leary

1925-10 Bruce Rd, PO Box 70  
Chesley, ON  
N0G 1L0, Canada

Phone: 519-363-3039 ext:122  
Fax: 519-363-9337

Works #: 220002725

26-November-2021

Date Rec. : 15 November 2021  
LR Report: CA30267-NOV21

Copy: #1

## CERTIFICATE OF ANALYSIS Final Report

Analysis	1: Analysis Start Date	2: Analysis Start Time	3: Analysis Completed Date	4: Analysis Completed Time	5: MAC	6: Half MAC	7: AO/OG	8: MDL	9: TW Community Park Well #1 & 2 Acquifer	10: TW Community Park Well #3 Acquifer
Sample Date & Time									15-Nov-21 09:40	15-Nov-21 08:00
Temperature Upon Receipt [at London Lab °C]	---	---	---	---	---	---	---	---	14.0	14.0
Temperature Upon Receipt [°C]	---	---	---	---	---	---	---	---	8.0	8.0
Total Chlorine [mg/L]	---	---	---	---	---	---	---	---	1.20	1.13
Field Free Chlorine [mg/L]	---	---	---	---	---	---	---	---	1.08	1.08
Nitrite (as N) [mg/L]	20-Nov-21	11:26	22-Nov-21	12:58	1	---	---	0.003	0.003 <MDL	0.003 <MDL
Nitrate (as N) [mg/L]	20-Nov-21	11:26	22-Nov-21	12:58	10	---	---	0.006	0.766	1.36
Nitrate + Nitrite (as N) [mg/L]	20-Nov-21	11:26	22-Nov-21	12:58	---	---	---	0.006	0.766	1.36
Antimony [ug/L]	18-Nov-21	08:30	18-Nov-21	13:32	6	3	---	0.6	0.6 <MDL	0.6 <MDL
Arsenic [ug/L]	18-Nov-21	08:30	18-Nov-21	13:32	10	5	---	0.2	0.6	0.5
Barium [ug/L]	18-Nov-21	08:30	18-Nov-21	13:32	1000	500	---	0.02	35.0	33.7
Boron [ug/L]	18-Nov-21	08:30	18-Nov-21	13:32	5000	2500	---	2	44	44
Cadmium [ug/L]	18-Nov-21	08:30	18-Nov-21	13:32	5	2.5	---	0.003	0.003 <MDL	0.004
Chromium [ug/L]	18-Nov-21	08:30	18-Nov-21	13:32	50	25	---	0.08	0.14	0.14
Mercury [ug/L]	25-Nov-21	13:49	25-Nov-21	17:18	1	0.5	---	0.01	0.01 <MDL	0.01 <MDL
Selenium [ug/L]	18-Nov-21	08:30	18-Nov-21	13:32	50	25	---	0.04	0.10	0.17
Uranium [ug/L]	18-Nov-21	08:30	18-Nov-21	13:32	20	10	---	0.002	0.382	0.400
Benzene [ug/L]	22-Nov-21	09:51	23-Nov-21	15:57	1	0.5	---	0.32	0.32 <MDL	0.32 <MDL
Carbon tetrachloride [ug/L]	22-Nov-21	09:51	23-Nov-21	15:57	2	1	---	0.17	0.17 <MDL	0.17 <MDL

Page 1 of 5

Data reported represents the sample submitted to SGS. Reproduction of this analytical report in full or in part is prohibited without prior written approval. Please refer to SGS General Conditions of Services located at <https://www.sgs.ca/en/terms-and-conditions> (Printed copies are available upon request.)

Test method information available upon request. "Temperature Upon Receipt" is representative of the whole shipment and may not reflect the temperature of individual samples.  
SGS Canada Inc. Environment-Health & Safety statement of conformity decision rule does not consider uncertainty when analytical results are compared to a specified standard or regulation.

**Works #:** 220002725

**LR Report :** CA30267-NOV21

Analysis	1: Analysis Start Date	2: Analysis Start Time	3: Analysis Completed Date	4: Analysis Completed Time	5: MAC	6: Half MAC	7: AO/OG	8: MDL	9: TW Community Park Well #1 & 2 Acquifer	10: TW Community Park Well #3 Acquifer
1,2-Dichlorobenzene [ug/L]	22-Nov-21	09:51	23-Nov-21	15:57	200	100	3	0.41	0.41 <MDL	0.41 <MDL
1,4-Dichlorobenzene [ug/L]	22-Nov-21	09:51	23-Nov-21	15:57	5	2.5	1	0.36	0.36 <MDL	0.36 <MDL
1,1-Dichloroethylene (vinylidene chloride) [ug/L]	22-Nov-21	09:51	23-Nov-21	15:57	14	7	—	0.33	0.33 <MDL	0.33 <MDL
1,2-Dichloroethane [ug/L]	22-Nov-21	09:51	23-Nov-21	15:57	5	2.5	—	0.35	0.35 <MDL	0.35 <MDL
Dichloromethane [ug/L]	22-Nov-21	09:51	23-Nov-21	15:57	50	25	—	0.35	0.35 <MDL	0.35 <MDL
Monochlorobenzene [ug/L]	22-Nov-21	09:51	23-Nov-21	15:57	80	40	30	0.30	0.3 <MDL	0.3 <MDL
Tetrachloroethylene (perchloroethylene) [ug/L]	22-Nov-21	09:51	23-Nov-21	15:57	10	5	—	0.35	0.35 <MDL	0.35 <MDL
Trichloroethylene [ug/L]	22-Nov-21	09:51	23-Nov-21	15:57	5	2.5	—	0.44	0.44 <MDL	0.44 <MDL
Vinyl Chloride [ug/L]	22-Nov-21	09:51	23-Nov-21	15:57	1	0.5	—	0.17	0.17 <MDL	0.17 <MDL
Diquat [ug/L]	17-Nov-21	10:26	19-Nov-21	14:20	70	35	—	1	1 <MDL	1 <MDL
Paraquat [ug/L]	17-Nov-21	10:26	19-Nov-21	14:20	10	5	—	1	1 <MDL	1 <MDL
Glyphosate [ug/L]	19-Nov-21	12:48	22-Nov-21	16:13	280	140	—	1	1 <MDL	1 <MDL
Polychlorinated Biphenyls (PCBs) - Total [ug/L]	17-Nov-21	09:55	19-Nov-21	09:42	3	1.5	—	0.04	0.04 <MDL	0.04 <MDL
Benzo(a)pyrene [ug/L]	22-Nov-21	08:03	25-Nov-21	11:35	0.01	0.005	—	0.004	0.004 <MDL	0.004 <MDL
Alachlor [ug/L]	22-Nov-21	08:03	25-Nov-21	11:35	5	2.5	—	0.02	0.02 <MDL	0.02 <MDL
Atrazine + N-dealkylated metabolites [ug/L]	22-Nov-21	08:03	25-Nov-21	11:35	5	2.5	—	0.01	0.01 <MDL	0.01
Atrazine [ug/L]	22-Nov-21	08:03	25-Nov-21	11:35	—	—	—	0.01	0.01 <MDL	0.01
Desethyl atrazine [ug/L]	22-Nov-21	08:03	25-Nov-21	11:35	—	—	—	0.01	0.01 <MDL	0.01 <MDL
Azinphos-methyl [ug/L]	22-Nov-21	08:03	25-Nov-21	11:35	20	10	—	0.05	0.05 <MDL	0.05 <MDL
Carbaryl [ug/L]	22-Nov-21	08:03	25-Nov-21	11:35	90	45	—	0.05	0.05 <MDL	0.05 <MDL
Carbofuran [ug/L]	22-Nov-21	08:03	25-Nov-21	11:35	90	45	—	0.01	0.01 <MDL	0.01 <MDL
Chlorpyrifos [ug/L]	22-Nov-21	08:03	25-Nov-21	11:35	90	45	—	0.02	0.02 <MDL	0.02 <MDL
Diazinon [ug/L]	22-Nov-21	08:03	25-Nov-21	11:35	20	10	—	0.02	0.02 <MDL	0.02 <MDL
Dimethoate [ug/L]	22-Nov-21	08:03	25-Nov-21	11:35	20	10	—	0.06	0.06 <MDL	0.06 <MDL
Diuron [ug/L]	22-Nov-21	08:03	25-Nov-21	11:35	150	75	—	0.03	0.03 <MDL	0.03 <MDL
Malathion [ug/L]	22-Nov-21	08:03	25-Nov-21	11:35	190	95	—	0.02	0.02 <MDL	0.02 <MDL
Metolachlor [ug/L]	22-Nov-21	08:03	25-Nov-21	11:35	50	25	—	0.01	0.01 <MDL	0.01 <MDL
Metribuzin [ug/L]	22-Nov-21	08:03	25-Nov-21	11:35	80	40	—	0.02	0.02 <MDL	0.02 <MDL
Phorate [ug/L]	22-Nov-21	08:03	25-Nov-21	11:35	2	1	—	0.01	0.01 <MDL	0.01 <MDL
Prometryne [ug/L]	22-Nov-21	08:03	25-Nov-21	11:35	1	0.5	—	0.03	0.03 <MDL	0.03 <MDL
Simazine [ug/L]	22-Nov-21	08:03	25-Nov-21	11:35	10	5	—	0.01	0.01 <MDL	0.01 <MDL
Terbufos [ug/L]	22-Nov-21	08:03	25-Nov-21	11:35	1	0.5	—	0.01	0.01 <MDL	0.01 <MDL

**Works #:** 220002725

**LR Report :** CA30287-NOV21

Analysis	1: Analysis Start Date	2: Analysis Start Time	3: Analysis Completed Date	4: Analysis Completed Time	5: MAC	6: Half MAC	7: AO/OG	8: MDL	9: TW Community Park Well #1 & 2 Acquifer	10: TW Community Park Well #3 Acquifer
Triallate [ug/L]	22-Nov-21	08:03	25-Nov-21	11:35	230	115	---	0.01	0.01 <MDL	0.01 <MDL
Trifluralin [ug/L]	22-Nov-21	08:03	25-Nov-21	11:35	45	22.5	---	0.02	0.02 <MDL	0.02 <MDL
2,4-dichlorophenoxyacetic acid (2,4-D) [ug/L]	18-Nov-21	08:08	25-Nov-21	11:35	100	50	---	0.19	0.19 <MDL	0.19 <MDL
Bromoxynil [ug/L]	18-Nov-21	08:08	24-Nov-21	14:13	5	2.5	---	0.33	0.33 <MDL	0.33 <MDL
Dicamba [ug/L]	18-Nov-21	08:08	24-Nov-21	14:13	120	60	---	0.20	0.20 <MDL	0.20 <MDL
Diclofop-methyl [ug/L]	18-Nov-21	08:08	24-Nov-21	14:13	9	4.5	---	0.40	0.40 <MDL	0.40 <MDL
MCPA [mg/L]	18-Nov-21	08:08	24-Nov-21	14:13	0.1	0.05	---	0.00012	0.00012 <MDL	0.00012 <MDL
Picloram [ug/L]	18-Nov-21	08:08	24-Nov-21	14:13	190	95	---	1	1 <MDL	1 <MDL
2,4-dichlorophenol [ug/L]	18-Nov-21	08:08	24-Nov-21	14:13	900	450	0.3	0.15	0.15 <MDL	0.15 <MDL
2,4,6-trichlorophenol [ug/L]	18-Nov-21	08:08	24-Nov-21	14:13	5	2.5	2	0.25	0.25 <MDL	0.25 <MDL
2,3,4,6-tetrachlorophenol [ug/L]	18-Nov-21	08:08	24-Nov-21	14:13	100	50	1	0.20	0.20 <MDL	0.20 <MDL
Pentachlorophenol [ug/L]	18-Nov-21	08:08	24-Nov-21	14:13	60	30	30	0.15	0.15 <MDL	0.15 <MDL

MAC - Maximum Acceptable Concentration  
Half MAC - Half of the Maximum Acceptable Concentration  
AO/OG - Aesthetic Objective / Operational Guideline  
MDL - SGS Method Detection Limit

### Method Descriptions

Units	Description	SGS Method Code
ug/L	VOC wtr	ME-CA-ENVJGC-LAK-AN-004
ug/L	VOC wtr	ME-CA-ENVJGC-LAK-AN-004
ug/L	VOC wtr	ME-CA-ENVJGC-LAK-AN-004
ug/L	VOC wtr	ME-CA-ENVJGC-LAK-AN-004
ug/L	PACP wtr	ME-CA-ENVJGC-LAK-AN-003
ug/L	PACP wtr	ME-CA-ENVJGC-LAK-AN-003
ug/L	PACP wtr	ME-CA-ENVJGC-LAK-AN-003
ug/L	PACP wtr	ME-CA-ENVJGC-LAK-AN-003
ug/L	Pest wtr	ME-CA-ENVJGC-LAK-AN-018
ug/L	Arsimony by ICP-MS Drinking Water	ME-CA-ENVJSPE-LAK-AN-008
ug/L	Arsenic by ICP-MS Drinking Water	ME-CA-ENVJSPE-LAK-AN-008
ug/L	Pest wtr	ME-CA-ENVJGC-LAK-AN-018
ug/L	Pest wtr	ME-CA-ENVJGC-LAK-AN-018
ug/L	Pest wtr	ME-CA-ENVJGC-LAK-AN-018
ug/L	Barium by ICP-MS Drinking Water	ME-CA-ENVJSPE-LAK-AN-008

**Works #:** 220002725

**LR Report :** CA30287-NOV21

Units	Description	SGS Method Code
ug/L	VOC wtr - BTEX	ME-CA-ENVJGC-LAK-AN-004
ug/L	Pest wtr - B(a)P	ME-CA-ENVJGC-LAK-AN-005
ug/L	Boron by ICP-MS Drinking Water	ME-CA-ENVJSPE-LAK-AN-009
ug/L	HAA wtr - DW	ME-CA-ENVJGC-LAK-AN-013
ug/L	VOC wtr - THM	ME-CA-ENVJGC-LAK-AN-004
ug/L	VOC wtr - THM	ME-CA-ENVJGC-LAK-AN-004
ug/L	PACP wtr	ME-CA-ENVJGC-LAK-AN-003
ug/L	Cadmium by ICP-MS Drinking Water	ME-CA-ENVJSPE-LAK-AN-008
ug/L	Pest wtr	ME-CA-ENVJGC-LAK-AN-018
ug/L	Pest wtr	ME-CA-ENVJGC-LAK-AN-018
ug/L	VOC wtr	ME-CA-ENVJGC-LAK-AN-004
ug/L	HAA wtr - DW	ME-CA-ENVJGC-LAK-AN-013
ug/L	VOC wtr - THM	ME-CA-ENVJGC-LAK-AN-004
ug/L	Pest wtr	ME-CA-ENVJGC-LAK-AN-018
ug/L	Chromium by ICP-MS Drinking Water	ME-CA-ENVJSPE-LAK-AN-006
ug/L	Pest wtr	ME-CA-ENVJGC-LAK-AN-018
ug/L	Pest wtr	ME-CA-ENVJGC-LAK-AN-018
ug/L	HAA wtr - DW	ME-CA-ENVJGC-LAK-AN-013
ug/L	VOC wtr - THM	ME-CA-ENVJGC-LAK-AN-004
ug/L	PACP wtr	ME-CA-ENVJGC-LAK-AN-003
ug/L	HAA wtr - DW	ME-CA-ENVJGC-LAK-AN-013
ug/L	VOC wtr	ME-CA-ENVJGC-LAK-AN-004
ug/L	PACP wtr	ME-CA-ENVJGC-LAK-AN-003
ug/L	Pest wtr	ME-CA-ENVJGC-LAK-AN-018
ug/L	Diquat by Dionex	ME-CA-ENVJGC-LAK-AN-005
ug/L	Pest wtr	ME-CA-ENVJGC-LAK-AN-018
ug/L	Glyphosate by Dionex	ME-CA-ENVJGC-LAK-AN-003
ug/L	Pest wtr	ME-CA-ENVJGC-LAK-AN-018
mg/L	PACP wtr	ME-CA-ENVJGC-LAK-AN-003
ug/L	Hg drinking water by CVAAS	ME-CA-ENVJSPE-LAK-AN-004
ug/L	Pest wtr	ME-CA-ENVJGC-LAK-AN-018
ug/L	Pest wtr	ME-CA-ENVJGC-LAK-AN-018
ug/L	VOC wtr	ME-CA-ENVJGC-LAK-AN-004
mg/L	Nitrate by Ion Chromatography	ME-CA-ENVJGC-LAK-AN-001
mg/L	Total Nitrate/Nitrite by Ion Chromatograph	ME-CA-ENVJGC-LAK-AN-001
mg/L	Nitrite by Ion Chromatography	ME-CA-ENVJGC-LAK-AN-001
ug/L	Paraquat by Dionex	ME-CA-ENVJGC-LAK-AN-005
ug/L	PACP wtr	ME-CA-ENVJGC-LAK-AN-003
ug/L	Pest wtr	ME-CA-ENVJGC-LAK-AN-018
ug/L	PACP wtr	ME-CA-ENVJGC-LAK-AN-003
ug/L	PCB wtr	ME-CA-ENVJGC-LAK-AN-001
ug/L	Pest wtr	ME-CA-ENVJGC-LAK-AN-018
ug/L	Selenium by ICP-MS Drinking Water	ME-CA-ENVJSPE-LAK-AN-006
ug/L	Pest wtr	ME-CA-ENVJGC-LAK-AN-018
ug/L	Pest wtr	ME-CA-ENVJGC-LAK-AN-018
ug/L	VOC wtr	ME-CA-ENVJGC-LAK-AN-004
ug/L	HAA wtr - DW	ME-CA-ENVJGC-LAK-AN-013
ug/L	Pest wtr	ME-CA-ENVJGC-LAK-AN-018

**SGS**  
SGS Canada Inc.  
P. O. Box 4300 - 165 Concession St.  
Lakefield - Ontario - K0L 2H0  
Phone: 705-652-2000 FAX: 705-652-6365

Works #: 220002725

LR Report : CA30267-NOV21

Units	Description	SGS Method Code
ug/L	HAA wtr - DW	ME-CA-ENVJGC-LAK-AN-013
ug/L	VOC wtr	ME-CA-ENVJGC-LAK-AN-004
ug/L	Pest wtr	ME-CA-ENVJGC-LAK-AN-018
ug/L	VOC wtr - THM	ME-CA-ENVJGC-LAK-AN-004
ug/L	Uranium by ICP-MS Drinking Water	ME-CA-ENVJGC-LAK-AN-008
ug/L	VOC wtr	ME-CA-ENVJGC-LAK-AN-004

  
Carrie Greenlaw  
Project Specialist,  
Environment, Health & Safety



SGS Canada Inc.  
P.O. Box 4300 - 185 Concession St.  
Lakefield - Ontario - K0L 2H0  
Phone: 705-652-2000 FAX: 705-652-6365

**Mun of Arran Elderslie (Arran-Elderslie Supply)**  
Attn : Mark O'Leary

1925-10 Bruce Rd, PO Box 70  
Chesley, ON  
N0G 1L0, Canada

Phone: 519-363-3039 ext:122  
Fax:519-363-9337

Works #: 220002725

26-November-2021

Date Rec. : 15 November 2021  
LR Report: CA30267-NOV21

Copy: #1

## CERTIFICATE OF ANALYSIS

### Final Report

Analysis	1: Analysis Start Date	2: Analysis Start Time	3: Analysis Completed Date	4: Analysis Completed Time	5: MAC	8: MDL	11: DW Distribution-North End	12: DW Distribution-Paisie y P.S.P	13: DW Distribution-Water Plant Domestic	14: DW Distribution-Paisie y Water Tower
Sample Date & Time							15-Nov-21 11:35	15-Nov-21 09:35	15-Nov-21 10:15	15-Nov-21 09:00
Temperature Upon Receipt [at London Lab °C]	---	---	---	---	---	---	14.0	14.0	14.0	14.0
Temperature Upon Receipt [°C]	---	---	---	---	---	---	8.0	8.0	8.0	8.0
Total Chlorine [mg/L]	---	---	---	---	---	---	0.54	0.55	1.06	1.22
Field Free Chlorine [mg/L]	---	---	---	---	---	---	0.46	0.40	1.00	1.12
Trihalomethanes (total) [ug/L]	22-Nov-21	09:51	23-Nov-21	15:57	100 (RAA)	0.37	26	24	---	---
Bromoform [ug/L]	22-Nov-21	09:51	23-Nov-21	15:57	---	0.34	0.34 <MDL	0.34 <MDL	---	---
Bromodichloromethane [ug/L]	22-Nov-21	09:51	23-Nov-21	15:57	---	0.26	7.6	6.6	---	---
Chloroform [ug/L]	22-Nov-21	09:51	23-Nov-21	15:57	---	0.29	15	14	---	---
Dibromochloromethane [ug/L]	22-Nov-21	09:51	23-Nov-21	15:57	---	0.37	3.5	3.1	---	---
Total Haloacetic Acids (HAA5) [ug/L]	18-Nov-21	08:37	19-Nov-21	11:51	80 (RAA)	5.3	---	---	5.3 <MDL	5.3 <MDL
Bromoacetic Acid [ug/L]	18-Nov-21	08:37	19-Nov-21	11:51	---	2.9	---	---	2.9 <MDL	2.9 <MDL
Chloroacetic Acid [ug/L]	18-Nov-21	08:37	19-Nov-21	11:51	---	4.7	---	---	4.7 <MDL	4.7 <MDL
Dichloroacetic Acid [ug/L]	18-Nov-21	08:37	19-Nov-21	11:51	---	2.6	---	---	2.6 <MDL	3.8
Dibromoacetic Acid [ug/L]	18-Nov-21	08:37	19-Nov-21	11:51	---	2.0	---	---	2.0 <MDL	2.0 <MDL
Trichloroacetic Acid [ug/L]	18-Nov-21	08:37	19-Nov-21	11:51	---	5.3	---	---	5.3 <MDL	5.3 <MDL

MAC - Maximum Acceptable Concentration  
Half MAC - Half of the Maximum Acceptable Concentration  
AO/OG - Aesthetic Objective / Operational Guideline  
MDL - SGS Method Detection Limit

Page 1 of 3

Data reported represents the sample submitted to SGS. Reproduction of this analytical report in full or in part is prohibited without prior written approval. Please refer to SGS General Conditions of Services located at <https://www.sgs.ca/en/terms-and-conditions> (Printed copies are available upon request.)

Test method information available upon request. "Temperature Upon Receipt" is representative of the whole shipment and may not reflect the temperature of individual samples.

SGS Canada Inc. Environment-Health & Safety statement of conformity decision rule does not consider uncertainty when analytical results are compared to a specified standard or regulation.



SGS Canada Inc.

P.O. Box 4300 - 185 Concession St.  
Lakefield - Ontario - K0L 2H0  
Phone: 705-652-2000 FAX: 705-652-6365

Nov 15 - THM, HAA

Works #: 220002725

26-November-2021

## Mun of Arran Elderslie (Arran-Elderslie Supply)

Attn : Mark O'Leary

1925-10 Bruce Rd, PO Box 70  
Chesley, ON  
N0G 1L0, Canada

Phone: 519-363-3039 ext:122  
Fax:519-363-9337

Date Rec. : 15 November 2021  
LR Report: CA30267-NOV21

Copy: #1

# CERTIFICATE OF ANALYSIS

## Final Report

Analysis	1: Analysis Start Date	2: Analysis Start Time	3: Analysis Completed Date	4: Analysis Completed Time	5: MAC	8: MDL	11: DW Distribution-North End	12: DW Distribution-Paisley P.S.P	13: DW Distribution-Water Plant Domestic	14: DW Distribution-Paisley Water Tower
Sample Date & Time							15-Nov-21 11:35	15-Nov-21 09:35	15-Nov-21 10:15	15-Nov-21 09:00
Temperature Upon Receipt [at London Lab °C]	---	---	---	---	---	---	14.0	14.0	14.0	14.0
Temperature Upon Receipt [°C]	---	---	---	---	---	---	8.0	8.0	8.0	8.0
Total Chlorine [mg/L]	---	---	---	---	---	---	0.54	0.55	1.06	1.22
Field Free Chlorine [mg/L]	---	---	---	---	---	---	0.46	0.40	1.00	1.12
Trihalomethanes (total) [ug/L]	22-Nov-21	09:51	23-Nov-21	15:57	100 (RAA)	0.37	26	24	---	---
Bromoform [ug/L]	22-Nov-21	09:51	23-Nov-21	15:57	---	0.34	0.34 <MDL	0.34 <MDL	---	---
Bromodichloromethane [ug/L]	22-Nov-21	09:51	23-Nov-21	15:57	---	0.26	7.6	6.6	---	---
Chloroform [ug/L]	22-Nov-21	09:51	23-Nov-21	15:57	---	0.29	15	14	---	---
Dibromochloromethane [ug/L]	22-Nov-21	09:51	23-Nov-21	15:57	---	0.37	3.5	3.1	---	---
Total Haloacetic Acids (HAA5) [ug/L]	18-Nov-21	08:37	19-Nov-21	11:51	80 (RAA)	5.3	---	---	5.3 <MDL	5.3 <MDL
Bromoacetic Acid [ug/L]	18-Nov-21	08:37	19-Nov-21	11:51	---	2.9	---	---	2.9 <MDL	2.9 <MDL
Chloroacetic Acid [ug/L]	18-Nov-21	08:37	19-Nov-21	11:51	---	4.7	---	---	4.7 <MDL	4.7 <MDL
Dichloroacetic Acid [ug/L]	18-Nov-21	08:37	19-Nov-21	11:51	---	2.6	---	---	2.6 <MDL	3.8
Dibromoacetic Acid [ug/L]	18-Nov-21	08:37	19-Nov-21	11:51	---	2.0	---	---	2.0 <MDL	2.0 <MDL
Trichloroacetic Acid [ug/L]	18-Nov-21	08:37	19-Nov-21	11:51	---	5.3	---	---	5.3 <MDL	5.3 <MDL

MAC - Maximum Acceptable Concentration  
Half MAC - Half of the Maximum Acceptable Concentration  
AO/OG - Aesthetic Objective / Operational Guideline  
MDL - SGS Method Detection Limit



**SGS Canada Inc.**

P.O. Box 4300 - 185 Concession St.

Lakefield - Ontario - KOL 2H0

Phone: 705-652-2000 FAX: 705-652-6365

**Works #:** 220002725

**LR Report :** CA30267-NOV21

## Method Descriptions

Units	Description	SGS Method Code
ug/L	VOC wtr	ME-CA-[ENV]GC-LAK-AN-004
ug/L	VOC wtr	ME-CA-[ENV]GC-LAK-AN-004
ug/L	VOC wtr	ME-CA-[ENV]GC-LAK-AN-004
ug/L	VOC wtr	ME-CA-[ENV]GC-LAK-AN-004
ug/L	PACP wtr	ME-CA-[ENV]GC-LAK-AN-003
ug/L	PACP wtr	ME-CA-[ENV]GC-LAK-AN-003
ug/L	PACP wtr	ME-CA-[ENV]GC-LAK-AN-003
ug/L	PACP wtr	ME-CA-[ENV]GC-LAK-AN-003
ug/L	Pest wtr	ME-CA-[ENV]GC-LAK-AN-018
ug/L	Antimony by ICP-MS Drinking Water	ME-CA-[ENV]SPE-LAK-AN-006
ug/L	Arsenic by ICP-MS Drinking Water	ME-CA-[ENV]SPE-LAK-AN-006
ug/L	Pest wtr	ME-CA-[ENV]GC-LAK-AN-018
ug/L	Pest wtr	ME-CA-[ENV]GC-LAK-AN-018
ug/L	Pest wtr	ME-CA-[ENV]GC-LAK-AN-018
ug/L	Barium by ICP-MS Drinking Water	ME-CA-[ENV]SPE-LAK-AN-006
ug/L	VOC wtr - BTEX	ME-CA-[ENV]GC-LAK-AN-004
ug/L	Pest wtr - B(a)P	ME-CA-[ENV]GC-LAK-AN-005
ug/L	Boron by ICP-MS Drinking Water	ME-CA-[ENV]SPE-LAK-AN-006
ug/L	HAA wtr - DW	ME-CA-[ENV]GC-LAK-AN-013
ug/L	VOC wtr - THM	ME-CA-[ENV]GC-LAK-AN-004
ug/L	VOC wtr - THM	ME-CA-[ENV]GC-LAK-AN-004
ug/L	PACP wtr	ME-CA-[ENV]GC-LAK-AN-003
ug/L	Cadmium by ICP-MS Drinking Water	ME-CA-[ENV]SPE-LAK-AN-006
ug/L	Pest wtr	ME-CA-[ENV]GC-LAK-AN-018
ug/L	Pest wtr	ME-CA-[ENV]GC-LAK-AN-018
ug/L	VOC wtr	ME-CA-[ENV]GC-LAK-AN-004
ug/L	HAA wtr - DW	ME-CA-[ENV]GC-LAK-AN-013
ug/L	VOC wtr - THM	ME-CA-[ENV]GC-LAK-AN-004
ug/L	Pest wtr	ME-CA-[ENV]GC-LAK-AN-018
ug/L	Chromium by ICP-MS Drinking Water	ME-CA-[ENV]SPE-LAK-AN-006
ug/L	Pest wtr	ME-CA-[ENV]GC-LAK-AN-018
ug/L	Pest wtr	ME-CA-[ENV]GC-LAK-AN-018
ug/L	HAA wtr - DW	ME-CA-[ENV]GC-LAK-AN-013
ug/L	VOC wtr - THM	ME-CA-[ENV]GC-LAK-AN-004
ug/L	PACP wtr	ME-CA-[ENV]GC-LAK-AN-003
ug/L	HAA wtr - DW	ME-CA-[ENV]GC-LAK-AN-013
ug/L	VOC wtr	ME-CA-[ENV]GC-LAK-AN-004
ug/L	PACP wtr	ME-CA-[ENV]GC-LAK-AN-003
ug/L	Pest wtr	ME-CA-[ENV]GC-LAK-AN-018
ug/L	Diquat by Dionex	ME-CA-[ENV]IC-LAK-AN-005
ug/L	Pest wtr	ME-CA-[ENV]GC-LAK-AN-018
ug/L	Glyphosate by Dionex	ME-CA-[ENV]IC-LAK-AN-003
ug/L	Pest wtr	ME-CA-[ENV]GC-LAK-AN-018
mg/L	PACP wtr	ME-CA-[ENV]GC-LAK-AN-003



**SGS Canada Inc.**

P.O. Box 4300 - 185 Concession St.

Lakefield - Ontario - KOL 2H0

Phone: 705-652-2000 FAX: 705-652-6365

**Works #:** 220002725

**LR Report :** CA30267-NOV21

Units	Description	SGS Method Code
ug/L	Hg drinking water by CVAAS	ME-CA-[ENV]SPE-LAK-AN-004
ug/L	Pest wtr	ME-CA-[ENV]GC-LAK-AN-018
ug/L	Pest wtr	ME-CA-[ENV]GC-LAK-AN-018
ug/L	VOC wtr	ME-CA-[ENV]GC-LAK-AN-004
mg/L	Nitrate by Ion Chromatography	ME-CA-[ENV]IC-LAK-AN-001
mg/L	Total Nitrate/Nitrite by Ion Chromatograph	ME-CA-[ENV]IC-LAK-AN-001
mg/L	Nitrite by Ion Chromatography	ME-CA-[ENV]IC-LAK-AN-001
ug/L	Paraquat by Dionex	ME-CA-[ENV]IC-LAK-AN-005
ug/L	PACP wtr	ME-CA-[ENV]GC-LAK-AN-003
ug/L	Pest wtr	ME-CA-[ENV]GC-LAK-AN-018
ug/L	PACP wtr	ME-CA-[ENV]GC-LAK-AN-003
ug/L	PCB wtr	ME-CA-[ENV]GC-LAK-AN-001
ug/L	Pest wtr	ME-CA-[ENV]GC-LAK-AN-018
ug/L	Selenium by ICP-MS Drinking Water	ME-CA-[ENV]SPE-LAK-AN-006
ug/L	Pest wtr	ME-CA-[ENV]GC-LAK-AN-018
ug/L	Pest wtr	ME-CA-[ENV]GC-LAK-AN-018
ug/L	VOC wtr	ME-CA-[ENV]GC-LAK-AN-004
ug/L	HAA wtr - DW	ME-CA-[ENV]GC-LAK-AN-013
ug/L	Pest wtr	ME-CA-[ENV]GC-LAK-AN-018
ug/L	HAA wtr - DW	ME-CA-[ENV]GC-LAK-AN-013
ug/L	VOC wtr	ME-CA-[ENV]GC-LAK-AN-004
ug/L	Pest wtr	ME-CA-[ENV]GC-LAK-AN-018
ug/L	VOC wtr - THM	ME-CA-[ENV]GC-LAK-AN-004
ug/L	Uranium by ICP-MS Drinking Water	ME-CA-[ENV]SPE-LAK-AN-006
ug/L	VOC wtr	ME-CA-[ENV]GC-LAK-AN-004

Carrie Greenlaw  
Project Specialist,  
Environment, Health & Safety

## **APPENDIX C**

### **MUNICIPAL DRINKING WATER LICENSE AND DRINKING WATER WORKS PERMITS**

## MUNICIPAL DRINKING WATER LICENCE

**Licence Number: 079-102**  
**Issue Number: 4**

Pursuant to the *Safe Drinking Water Act*, 2002, S.O. 2002, c. 32, and the regulations made thereunder and subject to the limitations thereof, I hereby issue this municipal drinking water licence under Part V of the *Safe Drinking Water Act*, 2002, S.O. 2002, c. 32 to:

### **The Corporation of the Municipality of Arran-Elderslie**

**PO Box 70**  
**1925 Bruce Road #10**  
**Chesley ON N0G 1L0**

For the following municipal residential drinking water system:

### **Arran-Elderslie Drinking Water System**

This municipal drinking water licence includes the following:

<b>Schedule</b>	<b>Description</b>
Schedule A	Drinking Water System Information
Schedule B	General Conditions
Schedule C	System-Specific Conditions
Schedule D	Conditions for Relief from Regulatory Requirements
Schedule E	Pathogen Log Removal/Inactivation Credits

Upon the effective date of this drinking water licence # 079-102, all previously issued versions of licence # 079-102 are revoked and replaced by this licence.

DATED at TORONTO this 8th day of January, 2021

Signature



Aziz Ahmed, P.Eng.  
Director  
Part V, *Safe Drinking Water Act*, 2002

## Schedule A: Drinking Water System Information

System Owner	<b>The Corporation of the Municipality of Arran-Elderslie</b>
Licence Number	<b>079-102</b>
Drinking Water System Name	<b>Arran-Elderslie Drinking Water System</b>
Licence Effective Date	<b>January 8th, 2021</b>

### 1.0 Licence Information

Licence Issue Date	January 8th, 2021
Licence Effective Date	January 8th, 2021
Licence Expiry Date	2026-01-06
Application for Licence Renewal Date	2025-07-07

### 2.0 Incorporated Documents

The following documents are applicable to the above drinking water system and form part of this licence:

#### 2.1 Drinking Water Works Permit

Drinking Water System Name	Permit Number	Issue Date
Arran-Elderslie Drinking Water System	079-202	January 8th, 2021

#### 2.2 Permits to Take Water

Water Taking Location	Permit Number	Issue Date
CPW1, CPW2 and CPW3	3655-A3RPJL	November 13, 2015

#### 2.3 Other Documents

Document Title	Version Number	Version Date
N/A	N/A	N/A

### 3.0 Financial Plans

The Financial Plan Number for the Financial Plan required to be developed for this drinking water system in accordance with O. Reg. 453/07 shall be:	079-302
Alternately, if one Financial Plan is developed for all drinking water systems owned by the owner, the Financial Plan Number shall be:	079-301A

**4.0 Accredited Operating Authority**

<b>Drinking Water System or Operational Subsystems</b>	<b>Accredited Operating Authority</b>	<b>Operational Plan No.</b>	<b>Operating Authority No.</b>
Arran-Elderslie Drinking Water System	The Corporation of the Municipality of Arran-Elderslie	079-402	079-OA1

## Schedule B: General Conditions

System Owner	The Corporation of the Municipality of Arran-Elderslie
Licence Number	079-102
Drinking Water System Name	Arran-Elderslie Drinking Water System
Licence Effective Date	January 8th, 2021

### 1.0 Definitions

**1.1** Words and phrases not defined in this licence and the associated drinking water works permit shall be given the same meaning as those set out in the SDWA and any regulations made in accordance with that act, unless the context requires otherwise.

**1.2** In this licence and the associated drinking water works permit:

**“adverse effect”, “contaminant” and “natural environment”** shall have the same meanings as in the EPA;

**“alteration”** may include the following in respect of this drinking water system:

- (a) An addition to the system,
- (b) A modification of the system,
- (c) A replacement of part of the system, and
- (d) An extension of the system;

**“compound of concern”** means a contaminant described in paragraph 4 subsection 26 (1) of O. Reg. 419/05, namely, a contaminant that is discharged to the air from a component of the drinking water system in an amount that is not negligible;

**“CT”** means the CT Disinfection Concept, as described in subsection 3.1.1 of the Ministry’s Procedure for Disinfection of Drinking Water in Ontario, dated July 29 2016.

**“Director”** means a Director appointed pursuant to section 6 of the SDWA for the purposes of Part V of the SDWA;

**“drinking water works permit”** means the drinking water works permit for the drinking water system, as identified in Schedule A of this licence and as amended from time to time;

**“emission summary table”** means a table described in paragraph 14 of subsection 26 (1) of O. Reg. 419/05;

**“EPA”** means the *Environmental Protection Act*, R.S.O. 1990, c. E.19;

**“financial plan”** means the financial plan required by O. Reg. 453/07;

**“Harmful Algal Bloom (HAB)”** means an overgrowth of aquatic algal bacteria that produce or have the potential to produce toxins in the surrounding water, when the algal cells are damaged or die. Such bacteria are harmful to people and animals and include microcystins produced by cyanobacterial blooms.

**“licence”** means this municipal drinking water licence for the municipal drinking water system identified in Schedule A of this licence;

**“Ministry”** means the Ontario Ministry of the Environment, Conservation and Parks;

**“operational plan”** means an operational plan developed in accordance with the Director’s Directions – Minimum Requirements for Operational Plans made under the authority of subsection 15(1) of the SDWA;

**“owner”** means the owner of the drinking water system as identified in Schedule A of this licence;

**“OWRA”** means the *Ontario Water Resources Act*, R.S.O. 1990, c. 0.40;

**“permit to take water”** means the permit to take water that is associated with the taking of water for purposes of the operation of the drinking water system, as identified in Schedule A of this licence and as amended from time to time;

**“point of impingement”** has the same meaning as in section 2 of O. Reg. 419/05 under the EPA;

**“point of impingement limit”** means the appropriate standard from Schedule 2 or 3 of O. Reg. 419/05 under the EPA and if a standard is not provided for a compound of concern, the concentration set out for the compound of concern in the document titled “Air Contaminants Benchmarks (ACB) List: Standards, guidelines and screening levels for assessing point of impingement concentrations of air contaminants”, as amended from time to time and published by the Ministry and available on a government of Ontario website;

**“licensed engineering practitioner”** means a person who holds a licence, limited licence or temporary licence under the Professional Engineers Act;

**“provincial officer”** means a provincial officer designated pursuant to section 8 of the SDWA;

**“publication NPC-300”** means the Ministry publication titled “Environmental Noise Guideline: Stationary and Transportation Sources – Approval and Planning” dated August 2013, as amended;

**“SCADA system”** means a supervisory control and data acquisition system used for process monitoring, automation, recording and/or reporting within the drinking water system;

**“SDWA”** means the *Safe Drinking Water Act*, 2002, S.O. 2002, c. 32;

**"sensitive receptor"** means any location where routine or normal activities occurring at reasonably expected times would experience adverse effect(s) from a discharge to air from an emergency generator that is a component of the drinking water system, including one or a combination of:

- (a) private residences or public facilities where people sleep (e.g.: single and multi-unit dwellings, nursing homes, hospitals, trailer parks, camping grounds, etc.),
- (b) institutional facilities (e.g.: schools, churches, community centres, day care centres, recreational centres, etc.),
- (c) outdoor public recreational areas (e.g.: trailer parks, play grounds, picnic areas, etc.), and
- (d) other outdoor public areas where there are continuous human activities (e.g.: commercial plazas and office buildings).

**"sub-system"** has the same meaning as in Ontario Regulation 128/04 (Certification of Drinking Water System Operators and Water Quality Analysts) under the SDWA;

**"surface water"** means water bodies (lakes, wetlands, ponds - including dug-outs), water courses (rivers, streams, water-filled drainage ditches), infiltration trenches, and areas of seasonal wetlands;

**"UV"** means ultraviolet, as in ultraviolet light produced from an ultraviolet reactor.

## 2.0 Applicability

- 2.1 In addition to any other applicable legal requirements, the drinking water system identified above shall be established, altered and operated in accordance with the conditions of the drinking water works permit and this licence.

## 3.0 Licence Expiry

- 3.1 This licence expires on the date identified as the licence expiry date in Schedule A of this licence.

## 4.0 Licence Renewal

- 4.1 Any application to renew this licence shall be made on or before the date identified as the application for licence renewal date set out in Schedule A of this licence.

## 5.0 Compliance

- 5.1 The owner and operating authority shall ensure that any person authorized to carry out work on or to operate any aspect of the drinking water system has been informed of the SDWA, all applicable regulations made in accordance with that act, the drinking water works permit and this licence and shall take all reasonable measures to ensure any such person complies with the same.

## **6.0 Licence and Drinking Water Works Permit Availability**

- 6.1** At least one copy of this licence and the drinking water works permit shall be stored in such a manner that they are readily viewable by all persons involved in the operation of the drinking water system.

## **7.0 Permit to Take Water and Drinking Water Works Permit**

- 7.1** A permit to take water identified in Schedule A of this licence is the applicable permit on the date identified as the Effective Date of this licence.
- 7.2** A drinking water works permit identified in Schedule A of this licence is the applicable permit on the date identified as the Effective Date of this licence.

## **8.0 Financial Plan**

- 8.1** For every financial plan prepared in accordance with subsections 2(1) and 3(1) of O. Reg. 453/07, the owner of the drinking water system shall:
- 8.1.1 Ensure that the financial plan contains on the front page of the financial plan, the appropriate financial plan number as set out in Schedule A of this licence; and
- 8.1.2 Submit a copy of the financial plan to the Ministry of Municipal Affairs and Housing within three (3) months of receiving approval by a resolution of municipal council or the governing body of the owner.

## **9.0 Interpretation**

- 9.1** Where there is a conflict between the provisions of this licence and any other document, the following hierarchy shall be used to determine the provision that takes precedence:
- 9.1.1 The SDWA;
- 9.1.2 A condition imposed in this licence that explicitly overrides a prescribed regulatory requirement;
- 9.1.3 A condition imposed in the drinking water works permit that explicitly overrides a prescribed regulatory requirement;
- 9.1.4 Any regulation made under the SDWA;
- 9.1.5 Any provision of this licence that does not explicitly override a prescribed regulatory requirement;
- 9.1.6 Any provision of the drinking water works permit that does not explicitly override a prescribed regulatory requirement;
- 9.1.7 Any application documents listed in this licence, or the drinking water works permit from the most recent to the earliest; and

- 9.1.8 All other documents listed in this licence, or the drinking water works permit from the most recent to the earliest.
- 9.1.9 Any other technical bulletin or procedure issued by the Ministry from the most recent to the earliest.
- 9.2 If any requirement of this licence or the drinking water works permit is found to be invalid by a court of competent jurisdiction, the remaining requirements of this licence and the drinking water works permit shall continue to apply.
- 9.3 The issuance of and compliance with the conditions of this licence and the drinking water works permit does not:
  - 9.3.1 Relieve any person of any obligation to comply with any provision of any applicable statute, regulation or other legal requirement, including the *Environmental Assessment Act*, R.S.O. 1990, c. E.18; and
  - 9.3.2 Limit in any way the authority of the appointed Directors and provincial officers of the Ministry to require certain steps be taken or to require the owner to furnish any further information related to compliance with the conditions of this licence or the drinking water works permit.
- 9.4 For greater certainty, nothing in this licence or the drinking water works permit shall be read to provide relief from regulatory requirements in accordance with section 46 of the SDWA, except as expressly provided in the licence or the drinking water works permit.

## 10.0 Adverse Effects

- 10.1 Nothing in this licence or the drinking water works permit shall be read as to permit:
  - 10.1.1 The discharge of a contaminant into the natural environment that causes or is likely to cause an adverse effect; or
  - 10.1.2 The discharge of any material of any kind into or in any waters or on any shore or bank thereof or into or in any place that may impair the quality of the water of any waters.
- 10.2 All reasonable steps shall be taken to minimize and ameliorate any adverse effect on the natural environment or impairment of the quality of water of any waters resulting from the operation of the drinking water system including such accelerated or additional monitoring as may be necessary to determine the nature and extent of the effect or impairment.
- 10.3 Fulfillment of one or more conditions imposed by this licence or the drinking water works permit does not eliminate the requirement to fulfill any other condition of this licence or the drinking water works permit.

## 11.0 Change of Owner or Operating Authority

- 11.1 This licence is not transferable without the prior written consent of the Director.

- 11.2** The owner shall notify the Director in writing at least 30 days prior to a change of any operating authority identified in Schedule A of this licence.

11.2.1 Where the change of operating authority is the result of an emergency situation, the owner shall notify the Director in writing of the change as soon as practicable.

## **12.0 Information to be Provided**

- 12.1** Any information requested by a Director or a provincial officer concerning the drinking water system and its operation, including but not limited to any records required to be kept by this licence or the drinking water works permit, shall be provided upon request.

## **13.0 Records Retention**

- 13.1** Except as otherwise required in this licence or the drinking water works permit, any records required by or created in accordance with this licence or the drinking water works permit, other than the records specifically referenced in section 12 or section 13 of O. Reg. 170/03, shall be retained for at least 5 years and made available for inspection by a provincial officer, upon request.

## **14.0 Chemicals and Materials**

- 14.1** All chemicals and materials used in the alteration or operation of the drinking water system that come into contact with water within the system shall meet all applicable standards set by both the American Water Works Association ("AWWA") and the American National Standards Institute ("ANSI") safety criteria standards NSF/60, NSF/61 and NSF/372.

14.1.1 In the event that the standards are updated, the owner may request authorization from the Director to use any on hand chemicals and materials that previously met the applicable standards.

- 14.2** The most current chemical and material product registration documentation from a testing institution accredited by either the Standards Council of Canada or by the American National Standards Institution ("ANSI") shall be available at all times for each chemical and material used in the operation of the drinking water system that comes into contact with water within the system.

- 14.3** Conditions 14.1 and 14.2 do not apply in the case of the following:

14.3.1 Water pipe and pipe fittings meeting AWWA specifications made from ductile iron, cast iron, PVC, fibre and/or steel wire reinforced cement pipe or high density polyethylene (HDPE);

14.3.2 Articles made from stainless steel, glass, HDPE or Teflon®;

14.3.3 Cement mortar for watermain lining and for water contacting surfaces of concrete structures made from washed aggregates and Portland cement;

14.3.4 Gaskets that are made from NSF approved materials;

- 14.3.5 Food grade oils and lubricants, food grade anti-freeze, and other food grade chemicals and materials that are compatible for drinking water use that may come into contact with drinking water, but are not added directly to the drinking water; or
- 14.3.6 Any particular chemical or material where the owner has written documentation signed by the Director that indicates that the Ministry is satisfied that the chemical or material is acceptable for use within the drinking water system and the chemical or material is only used as permitted by the documentation.

## 15.0 Drawings

- 15.1 All drawings and diagrams in the possession of the owner that show any treatment subsystem as constructed shall be retained by the owner unless the drawings and diagrams are replaced by a revised or updated version showing the subsystem as constructed subsequent to the alteration.
- 15.2 Any alteration to any treatment subsystem shall be incorporated into process flow diagrams, process and instrumentation diagrams, and record drawings and diagrams within one year of the alteration being completed or placed into service.
- 15.3 Process flow diagrams and process and instrumentation diagrams for any treatment subsystem shall be kept in a place, or made available in such a manner, that they may be readily viewed by all persons responsible for all or part of the operation of the drinking water system.

## 16.0 Operations and Maintenance Manual

- 16.1 An up-to-date operations and maintenance manual or manuals shall be maintained and applicable parts of the manual or manuals shall be made available for reference to all persons responsible for all or part of the operation or maintenance of the drinking water system.
- 16.2 The operations and maintenance manual or manuals, shall include at a minimum:
  - 16.2.1 The requirements of this licence and associated procedures;
  - 16.2.2 The requirements of the drinking water works permit for the drinking water system;
  - 16.2.3 A description of the processes used to achieve primary and secondary disinfection within the drinking water system including where applicable:
    - a) A copy of the CT calculations that were used as the basis for primary disinfection under worst case operating conditions and other operating conditions, if applicable; and
    - b) The validated operating conditions for UV disinfection equipment, including a copy of the validation certificate;

- 16.2.4 Procedures for monitoring and recording the in-process parameters necessary for the control of any treatment subsystem and for assessing the performance of the drinking water system;
  - 16.2.5 Procedures for the operation and maintenance of monitoring equipment;
  - 16.2.6 Contingency plans and procedures for the provision of adequate equipment and material to deal with emergencies, upset conditions and equipment breakdown;
  - 16.2.7 Procedures for dealing with complaints related to the drinking water system, including the recording of the nature of the complaint and any investigation and corrective action taken in respect of the complaint;
  - 16.2.8 An inspection schedule for all wells associated with the drinking water system, including all production wells, standby wells, test wells and monitoring wells;
  - 16.2.9 Well inspection and maintenance procedures that consider the entire well structure of each well including all above and below grade well components; and
  - 16.2.10 Remedial action plans for situations where an inspection indicates non-compliance with respect to regulatory requirements and/or risk to raw well water quality.
- 16.3** Procedures necessary for the operation and maintenance of any alterations to the drinking water system shall be incorporated into the operations and maintenance manual or manuals prior to those alterations coming into operation.
- 16.4** All of the procedures included or referenced within the operations and maintenance manual must be implemented.

## Schedule C: System-Specific Conditions

System Owner	The Corporation of the Municipality of Arran-Elderslie
Licence Number	079-102
Drinking Water System Name	Arran-Elderslie Drinking Water System
Licence Effective Date	January 8th, 2021

### 1.0 System Performance

#### Rated Capacity

- 1.1** For each treatment subsystem listed in column 1 of Table 1, the maximum daily volume of treated water that flows from the treatment subsystem to the distribution system shall not exceed the value identified as the rated capacity in column 2 of the same row.

Table 1: Rated Capacity	
Column 1 Treatment Subsystem Name	Column 2 Rated Capacity (m <sup>3</sup> /day)
Arran-Elderslie Water Treatment Plant	5,564

#### Maximum Flow Rates

- 1.2** For each treatment subsystem listed in column 1 of Table 2, the maximum flow rate of water that flows into a treatment subsystem component listed in column 2 shall not exceed the value listed in column 3 of the same row.

Table 2: Maximum Flow Rates		
Column 1 Treatment Subsystem Name	Column 2 Treatment Subsystem Component	Column 3 Maximum Flow Rate (L/s)
CPW1, CPW2 and CPW3	Arran-Elderslie Water Treatment Plant	64.4

- 1.3** Despite conditions 1.1 and 1.2, a treatment subsystem may be operated temporarily at a maximum daily volume and/or a maximum flow rate above the values set out in column 2 of Table 1 and column 3 of Table 2 respectively for the purposes of fighting a large fire or for the maintenance of the drinking water system.
- 1.4** Condition 1.3 does not authorize the discharge into the distribution system of any water that does not meet all of the requirements of this licence and all other regulatory requirements, including compliance with the Ontario Drinking Water Quality Standards.

### Residuals Management

- 1.5** In respect of an effluent discharged into the natural environment from a treatment subsystem or treatment subsystem component listed in column 1 of Table 3:
- 1.5.1 The annual average concentration of a test parameter identified in column 2 shall not exceed the value in column 3 of the same row; and
  - 1.5.2 The maximum concentration of a test parameter identified in column 2 shall not exceed the value in column 4 of the same row.
  - 1.5.3 The test parameters listed in column 2 of Table 3 shall be sampled in accordance with conditions 5.2, 5.3 and 5.4 of this Licence.

<b>Table 3: Residuals Management</b>			
<b>Column 1 Treatment Subsystem or Treatment Subsystem Component Name</b>	<b>Column 2 Test Parameter</b>	<b>Column 3 Annual Average Concentration (mg/L)</b>	<b>Column 4 Maximum Concentration (mg/L)</b>
Filter Backwash Tank	Total Suspended Solids	25	Not Applicable
Dechlorination System	Free Chlorine Residual	N/A	0.02

### UV Disinfection Equipment Performance

- 1.6** For each treatment subsystem or treatment subsystem component listed in column 1 of Table 4, and while directing water to the distribution system and being used to meet pathogen log removal/inactivation credits specified in Schedule E:
- 1.6.1 The UV disinfection equipment shall be operated within the validated limits for the equipment at all times such that a continuous pass-through UV dose is maintained throughout the life time of the UV lamp(s) that is at least the minimum continuous pass-through UV dose set out in column 2 of the same row
  - 1.6.2 In addition to any other sampling, analysis and recording that may be required, the ultraviolet light disinfection equipment shall test for the test parameters set out in column 4 of the same row at a testing frequency of once every five (5) minutes or less and record the test data at a recording frequency of once every four (4) hours or less;
  - 1.6.3 If there is a UV disinfection equipment alarm signaling that the disinfection equipment is malfunctioning, has lost power, or is not providing the appropriate level of disinfection the test parameters set out in column 4 of the same row shall be recorded at a recording frequency of once every five minutes or less until the alarm condition has been corrected;

- 1.6.4 A monthly summary report shall be prepared at the end of each calendar month which sets out the time, date and duration of each UV equipment alarm described in condition 1.6.3, the volume of water treated during each alarm period and the actions taken by the operating authority to correct the alarm situation;

Table 4: UV Disinfection Equipment			
Column 1 Treatment Subsystem or Treatment Subsystem Component Name	Column 2 Minimum Continuous Pass-Through UV Dose (mJ/cm <sup>2</sup> )	Column 3 Control Strategy	Column 4 Test Parameter
Not Applicable	Not Applicable	Not Applicable	Not Applicable

## 2.0 Flow Measurement and Recording Requirements

- 2.1 For each treatment subsystem identified in column 1 of Table 1 and in addition to any other flow measurement and recording that may be required, continuous flow measurement and recording shall be undertaken for:
- 2.1.1 The flow rate (L/s) and daily volume (m<sup>3</sup>/day) of treated water that flows from the treatment subsystem to the distribution system.
- 2.1.2 The flow rate (L/s) and daily volume (m<sup>3</sup>/day) of water that flows into the treatment subsystem.
- 2.2 For each treatment subsystem component identified in column 2 of Table 2 and in addition to any other flow measurement and recording that may be required, continuous flow measurement and recording shall be undertaken for the flow rate and daily volume of water that flows into the treatment subsystem component.

- 2.3** Where a rated capacity from Table 1 or a maximum flow rate from Table 2 is exceeded, the following shall be recorded:
- 2.3.1 The difference between the measured amount and the applicable rated capacity or maximum flow rate specified in Table 1 or Table 2;
  - 2.3.2 The time and date of the measurement;
  - 2.3.3 The reason for the exceedance; and
  - 2.3.4 The duration of time that lapses between the applicable rated capacity or maximum flow rate first being exceeded and the next measurement where the applicable rated capacity or maximum flow rate is no longer exceeded.

### **3.0 Calibration of Flow Measuring Devices**

- 3.1** All flow measuring devices that are required by regulation, by a condition in the drinking water works permit 079-202, or by a condition otherwise imposed by the Ministry, shall be checked and where necessary calibrated in accordance with the manufacturer's instructions.
- 3.2** If the manufacturer's instructions do not indicate how often to check and calibrate a flow measuring device, the equipment shall be checked and where necessary calibrated at least once every 12 months during which the drinking water system is in operation.
- 3.2.1 For greater certainty, if condition 3.2 applies, the equipment shall be checked and where necessary calibrated not more than 30 days after the first anniversary of the day the equipment was checked and calibrated in the previous 12-month period.

### **4.0 Calibration of CT Monitoring System**

- 4.1** Any measuring instrumentation that forms part of the monitoring system for CT shall be checked and where necessary calibrated at least once every 12 months during which the drinking water system is in operation, or more frequently in accordance with the manufacturer's instructions.
- 4.1.1 For greater certainty, if condition 4.1 applies, the instrumentation shall be checked and where necessary calibrated not more than 30 days after the first anniversary of the day the equipment was checked and calibrated in the previous 12-month period.

## 5.0 Additional Sampling, Testing and Monitoring

### Drinking Water Health and Non-Health Related Parameters

- 5.1** For each treatment subsystem or treatment subsystem component identified in column 1 of Tables 5 and 6 and in addition to any other sampling, testing and monitoring that may be required, sampling, testing and monitoring shall be undertaken for a test parameter listed in column 2 at the sampling frequency listed in column 3 and at the monitoring location listed in column 4 of the same row.

Table 5: Drinking Water Health Related Parameters			
Column 1 Treatment Subsystem or Treatment Subsystem Component Name	Column 2 Test Parameter	Column 3 Sampling Frequency	Column 4 Monitoring Location
Not Applicable	Not Applicable	Not Applicable	Not Applicable

Table 6: Drinking Water Non-Health Related Parameters			
Column 1 Treatment Subsystem or Treatment Subsystem Component Name	Column 2 Test Parameter	Column 3 Sampling Frequency	Column 4 Monitoring Location
Not Applicable	Not Applicable	Not Applicable	Not Applicable

### Environmental Discharge Parameters

- 5.2** For each treatment subsystem or treatment subsystem component identified in column 1 of Table 7 and in addition to any other sampling, testing and monitoring that may be required, sampling, testing and monitoring shall be undertaken for a test parameter listed in column 2 using the sample type identified in column 3 at the sampling frequency listed in column 4 and at the monitoring location listed in column 5 of the same row.

- 5.3** For the purposes of Table 7:

- 5.3.1** Manual Composite means the mean of at least three grab samples taken during a discharge event, with one sample being taken immediately following the commencement of the discharge event, one sample being taken approximately at the mid-point of the discharge event and one sample being taken immediately before the end of the discharge event; and
- 5.3.2** Automated Composite means samples must be taken during a discharge event by an automated sampler at a minimum sampling frequency of once per hour.

- 5.4** Any sampling, testing and monitoring for the test parameter Total Suspended Solids shall be performed in accordance with the requirements set out in the publication "Standard Methods for the Examination of Water and Wastewater", 23<sup>rd</sup> Edition, 2017, or as amended from time to time by more recently published editions.

**Table 7: Environmental Discharge Parameters**

Column 1 Treatment Subsystem or Treatment Subsystem Component Name	Column 2 Test Parameter	Column 3 Sample Type	Column 4 Sampling Frequency	Column 5 Monitoring Location
Filter Backwash Tank	Total Suspended Solids	Composite	Monthly	Point of Discharge
Dechlorination System	Free Chlorine Residual	Composite	Monthly	Point of Discharge

- 5.5** Pursuant to Condition 10 of Schedule B of this licence, the owner may undertake the following environmental discharges associated with the maintenance and/or repair of the drinking water system:

- 5.5.1 The discharge of potable water from a watermain to a road or storm sewer;
- 5.5.2 The discharge of potable water from a water storage facility or pumping station:
  - 5.5.2.1 To a road or storm sewer; or
  - 5.5.2.2 To a watercourse where the discharge has been dechlorinated and if necessary, sediment and erosion control measures have been implemented.
- 5.5.3 The discharge of dechlorinated non-potable water from a watermain, water storage facility or pumping station to a road or storm sewer;
- 5.5.4 The discharge of raw water from a groundwater well to the environment where if necessary, sediment and erosion control measures have been implemented; and
- 5.5.5 The discharge of raw water, potable water or non-potable water from a treatment subsystem to the environment where if necessary, the discharge has been dechlorinated and sediment and erosion control measures have been implemented.
- 5.5.6 The discharge of any excess water to a road, storm sewer or the environment, associated with the management of materials excavated as part of watermain construction or repair, where necessary sediment, erosion and environmental control measures have been implemented.

## 6.0 Studies Required

- 6.1** Not Applicable

## 7.0 Source Protection

- 7.1 The owner of the drinking water system shall implement risk management measures, as appropriate, to manage any potential threat to drinking water that results from the operation of the drinking water system.
- 7.2 The owner of the system shall notify the Director in writing within thirty (30) days of any approved changes to an applicable source protection plan that impact the assessed threat level of a fuel oil system identified in Schedule A of drinking water works permit.
- 7.3 The notification required in condition 7.2 shall include:
  - 7.3.1 A description of the changes and their impact on the assessed threat level of the fuel oil system(s); and,
  - 7.3.2 A timeline for re-assessing the threat level and providing the results of the assessment to the Director.

## **Schedule D: Conditions for Relief from Regulatory Requirements**

System Owner	<b>The Corporation of the Municipality of Arran-Elderslie</b>
Licence Number	<b>079-102</b>
Drinking Water System Name	<b>Arran-Elderslie Drinking Water System</b>
Licence Effective Date	<b>January 8th, 2021</b>

As of the effective date of the MDWL, no relief from regulatory requirements is authorized by the Director under section 46 of the SDWA in respect of the drinking water system.

## Schedule E: Pathogen Log Removal/Inactivation Credits

System Owner	The Corporation of the Municipality of Arran-Elderslie
Licence Number	079-102
Drinking Water System Name	Arran-Elderslie Drinking Water System
Licence Effective Date	January 8th, 2021

### 1.0 Primary Disinfection Pathogen Log Removal/Inactivation Credits

#### Arran-Elderslie Water Treatment Plant

CPW1, CPW2 and CPW3 [GROUNDWATER]

Minimum Log Removal/ Inactivation Required	Cryptosporidium Oocysts	Giardia Cysts	Viruses
Arran-Elderslie Water Treatment Plant	0	0	2

Log Removal/Inactivation Credits Assigned <sup>a</sup>	Cryptosporidium Oocysts	Giardia Cysts	Viruses
Chlorination [CT: chlorine contact pipe]	-	-	2+

<sup>a</sup> Log removal/inactivation credit assignment is based on each treatment process being fully operational and the applicable log removal/inactivation credit assignment criteria being met.

Treatment Component	Log Removal/Inactivation Credit Assignment Criteria
Chlorination	<ol style="list-style-type: none"> <li>1. Sampling and testing for free chlorine residual shall be carried out by continuous monitoring equipment in the treatment process at or near a location where the intended contact time has just been completed in accordance with the Ministry's Procedure for Disinfection of Drinking Water in Ontario; and</li> <li>2. At all times, CT provided shall be greater than or equal to the CT required to achieve the log removal credits assigned.</li> </ol>
Primary Disinfection Notes	

## DRINKING WATER WORKS PERMIT

**Permit Number: 079-202**  
**Issue Number: 5**

Pursuant to the *Safe Drinking Water Act*, 2002, S.O. 2002, c. 32, and the regulations made thereunder and subject to the limitations thereof, I hereby issue this drinking water works permit under Part V of the *Safe Drinking Water Act*, 2002, S.O. 2002, c. 32 to:

### **The Corporation of the Municipality of Arran-Elderslie**

**PO Box 70**  
**1925 Bruce Road #10**  
**Chesley ON N0G 1L0**

For the following municipal residential drinking water system:

### **Arran-Elderslie Drinking Water System**

This drinking water works permit includes the following:

<b>Schedule</b>	<b>Description</b>
Schedule A	Drinking Water System Description
Schedule B	General
Schedule C	All documents issued as Schedule C to this drinking water works permit which authorize alterations to the drinking water system
Schedule D	Process Flow Diagrams

Upon the effective date of this drinking water works permit # 079-202, all previously issued versions of permit # 079-202 are revoked and replaced by this permit.

DATED at TORONTO this 8th day of January, 2021

Signature



Aziz Ahmed, P.Eng.  
Director  
Part V, *Safe Drinking Water Act*, 2002

## Schedule A: Drinking Water System Description

System Owner	The Corporation of the Municipality of Arran-Elderslie
Permit Number	079-202
Drinking Water System Name	Arran-Elderslie Drinking Water System
Permit Effective Date	January 8th, 2021

### 1.0 System Description

- 1.1 The following is a summary description of the works comprising the above drinking water system:

#### Overview

The **Arran-Elderslie Drinking Water System** consists of three (3) ground water wells, one (1) drinking water treatment plant, two (2) standpipes, one (1) rechlorination facility, a 300 mm diameter trunk watermain approximately 15.7 km long connecting the Chesley water distribution system to the Paisley system and approximately 34 kilometers of distribution watermain.

### Ground Water Supplies

#### CPW1

Location	129, 4 <sup>th</sup> Ave SE, Chesley, Ontario
UTM Coordinates	NAD 83 UTM Zone 17, 492856 m E, 4904691 m N
WWR No.	1401010
Source	Groundwater (Non-GUDI)
Description	340 mm diameter x approximately 20 m deep drilled groundwater well complete with a pitless adapter
Equipment	A submersible well pump rated at 20.8 L/s at 80.96 m TDH
Notes	

**CPW2**

Location	129, 4 <sup>th</sup> Ave SE, Chesley, Ontario
UTM Coordinates	NAD 83 UTM Zone 17, 492848 m E, 4904726 m N
WWR No.	1407956
Source	Groundwater (Non-GUDI)
Description	324 mm diameter x 24.4 m deep drilled well complete with a pitless adapter
Equipment	A submersible well pump rated at 24.6 L/s at 80.12 m TDH
Notes	

**CPW3**

Location	129, 4 <sup>th</sup> Ave SE, Chesley, Ontario
UTM Coordinates	NAD 83 UTM Zone 17, 493123 m E, 4904783 m N
WWR No.	1407957
Source	Groundwater (Non-GUDI)
Description	254 mm diameter x 38.1 m deep drilled well
Equipment	A submersible well pump rated at 34.1 L/s at 96.43 m TDH complete with a pitless adapter
Notes	

## Treatment Facility

### Arran-Elderslie Water Treatment Plant

Location	129 4 <sup>th</sup> Ave. S.E., Chesley, Ontario
UTM Coordinates	NAD 83 UTM Zone 17, 492836 m E, 4904641 m N
Description	A water treatment plant building housing treatment equipment and all necessary instrumentation, controls and appurtenances
Pressure Filtration System	<p>Three (3) pressure filtration vessels (2 duty, 1 standby) for iron and manganese removal containing approximately 300 mm of Anthracite and 500 mm of catalytic media, each vessel 2,745 mm in diameter by 1,700 mm high, providing a filtration rate of 19.6 m/h, at a rated capacity of 2,781 m<sup>3</sup>/day per filter and discharging to the clearwell</p> <p>Two (2) filter backwash pumps (1 pump per clearwell cell) each rated at 74.5 L/s at 15.55 m TDH complete with all necessary electrical and controls</p>
Residuals Management System	One (1) backwash wastewater holding tank approximately 7 m x 13 m x 3 m in size discharging supernatant by gravity to the storm sewer or to the Saugeen River. Settled sludge is discharged to the Chesley Lagoon System
Dechlorination System	<p>Two calcium thiosulphate (2) chemical feed pumps, (1 duty, 1 standby) to dechlorinate filter backwash wastewater prior to disposal to the Saugeen River</p> <p>One (1) calcium thiosulphate chemical storage tank</p>
Chlorination System	<p>Three (3) sodium hypochlorite chemical feed pumps (1 duty, 2 standby). Feed point for iron and manganese oxidation is the common header from CPW1, CPW2, and CPW3 upstream of the filters. Feed point for primary disinfection is upstream of the chlorine contact chamber</p> <p>A post chlorination system consisting of two (2) positive displacement diaphragm type sodium hypochlorite chemical feed pumps (1 duty, 1 standby)</p> <p>Three (3) sodium hypochlorite chemical storage tanks complete with all necessary controls, piping and spill containment</p>
Chlorine Contact Pipe	An 86 m long x 600 mm diameter watermain providing chlorine contact time located on the plant site prior to entering the distribution system
Clearwell	An unbaffled two (2) cell, filtered water underground storage tank, each cell approximately 6 m x 8.2 m x 1.8 m water depth (total storage volume of 177 m <sup>3</sup> )
Standby Power	One (1) 230 kW diesel generator set complete with all necessary piping and controls
Notes	

## Off-Site Storage and Rechlorination

### Chesley Standpipe

Location	84 Tower Road, Chesley, Ontario
UTM Coordinates	NAD 83 UTM 17: 492422 m E, 4906152 m N
Total Volume	2725 m <sup>3</sup>
Notes	

### Paisley Standpipe and Rechlorination Facility

Location	281 Alma Street, Paisley, Ontario
UTM Coordinates	NAD 83 UTM 17: 478438 m E, 4905401 m N
Total Volume	2430 m <sup>3</sup>
Re-chlorination Equipment	Two (2) sodium hypochlorite chemical feed pumps (1 duty and 1 standby)
	One (1) sodium hypochlorite solution tank with secondary containment
Notes	

## Instrumentation and Control

### SCADA System

Arran-Elderslie Water Treatment Plant	One (1) free chlorine residual analyzer measuring the free residual at the contact chamber effluent complete with alarm
	One (1) turbidity analyzer measuring the turbidity at the contact chamber effluent complete with alarm
	Three (3) flow meters measuring the raw water flow from each well, one (1) flow meter to measure the volume and rate of backwash, one (1) flow meter measure the volume and rate of treated water leaving the plant
Notes	

## Fuel Oil Systems

### Arran-Elderslie Water Treatment Plant

Location	129 4 <sup>th</sup> Ave. S.E., Chesley, Ontario
UTM Coordinates	NAD 83 UTM Zone 17, 492836 m E, 4904641 m N
Description	One (1) 2,000 L double walled above ground sub-base fuel tank for 230 kW generator set
Fuel Type	Diesel
Source Protection Area	Saugeen, Grey Sauble, Northern Bruce Peninsula Source Protection Region
Notes	

## Watermains

### 1.2 Watermains within the distribution system comprise:

- 1.2.1 Watermains that have been set out in each document or file identified in column 1 of Table 1.

Table 1: Watermains	
Column 1 Document or File Name	Column 2 Date
Chesley_Water_Distribution_Updated_April2016.pdf	April 2016
Paisley_Water_Distribution_Updated_April2016.pdf	April 2016

- 1.2.2 Watermains that have been added, modified, replaced or extended further to the provisions of Schedule C of this drinking water works permit on or after the date identified in column 2 of Table 1 for each document or file identified in column 1.
- 1.2.3 Watermains that have been added, modified, replaced or extended further to an authorization by the Director on or after the date identified in column 2 of Table 1 for each document or file identified in column 1.

## Schedule B: General

System Owner	The Corporation of the Municipality of Arran-Elderslie
Permit Number	079-202
Drinking Water System Name	Arran-Elderslie Drinking Water System
Permit Effective Date	January 8th, 2021

### 1.0 Applicability

- 1.1 In addition to any other applicable legal requirements, the drinking water system identified above shall be altered and operated in accordance with the conditions of this drinking water works permit and the licence #079-102.
- 1.2 The definitions and conditions of licence #079-102 are incorporated into this permit and also apply to this drinking water system.

### 2.0 Alterations to the Drinking Water System

- 2.1 Any document issued by the Director to be incorporated into Schedule C to this drinking water works permit shall provide authority to alter the drinking water system in accordance with the applicable conditions of this drinking water works permit and licence #079-102.
  - 2.2 All documents issued by the Director as described in condition 2.1 shall form part of this drinking water works permit.
  - 2.3 All parts of the drinking water system in contact with drinking water that are added, modified, replaced, extended shall be disinfected in accordance with a procedure approved by the Director or in accordance with the applicable provisions of the following documents:
    - a) Until May 21, 2021, the ministry's Watermain Disinfection Procedure, dated November 2015, as of May 22, 2021, the ministry's Watermain Disinfection Procedure, dated August 1, 2020;
    - b) Subject to condition 2.3.2, any updated version of the ministry's Watermain Disinfection Procedure;
    - c) AWWA C652 – Standard for Disinfection of Water-Storage Facilities;
    - d) AWWA C653 – Standard for Disinfection of Water Treatment Plants; and
    - e) AWWA C654 – Standard for Disinfection of Wells.
- 1.0 For greater clarity, where an activity has occurred that could introduce contamination, including but not limited to repair, maintenance, or physical / video inspection, all equipment that may come in contact with the drinking water system shall be disinfected in accordance with the requirements of condition 2.3. above.

- 2.3.2 Updated requirements described in condition 2.3 b) are effective six months from the date of publication of the updated Watermain Disinfection Procedure.
- 2.4 The owner shall notify the Director in writing within thirty (30) days of the placing into service or the completion of any addition, modification, replacement, removal or extension of the drinking water system which had been authorized through:
- 2.4.1 Schedule B to this drinking water works permit which would require an alteration of the description of a drinking water system component described in Schedule A of this drinking water works permit;
- 2.4.2 Any document to be incorporated in Schedule C to this drinking water works permit respecting works other than watermain; or
- 2.4.3 Any approval issued prior to the issue date of the first drinking water works permit respecting works other than watermain which were not in service at the time of the issuance of the first drinking water works permit.
- 2.5 The notification required in condition 2.4 shall be submitted using the "Director Notification Form" published by the Ministry.
- 2.6 For greater certainty, the notification requirements set out in condition 2.4 do not apply to any addition, modification, replacement, removal or extension in respect of the drinking water system which:
- 2.6.1 Is exempt from subsection 31(1) of the SDWA by subsection 9.(2) of O. Reg. 170/03;
- 2.6.2 Constitutes maintenance or repair of the drinking water system; or
- 2.6.3 Is a watermain authorized by condition 3.1 of Schedule B of this drinking water works permit.
- 2.7 The owner shall notify the legal owner of any part of the drinking water system that is prescribed as a municipal drinking water system by section 2 of O. Reg. 172/03 of the requirements of the licence and this drinking water works permit as applicable to the prescribed system.
- 2.8 For greater certainty, the owner may only carry out alterations to the drinking water system in accordance with this drinking water works permit after having satisfied other applicable legal obligations, including those arising from the *Environmental Assessment Act*, *Niagara Escarpment Planning and Development Act*, *Oak Ridges Moraine Conservation Act, 2001* and *Greenbelt Act, 2005*.

### 3.0 Watermain Additions, Modifications, Replacements and Extensions

- 3.1 The owner may alter the drinking water system, or permit it to be altered by a person acting on the owner's behalf, by adding, modifying, replacing or extending a watermain within the distribution system subject to the following conditions:
- 3.1.1 The design of the watermain addition, modification, replacement or extension:
- a) Has been prepared by a licensed engineering practitioner;

- b) Has been designed only to transmit water and has not been designed to treat water;
  - c) Satisfies the design criteria set out in the Ministry publication "Watermain Design Criteria for Future Alterations Authorized under a Drinking Water Works Permit – June 2012", as amended from time to time; and
  - d) Is consistent with or otherwise addresses the design objectives contained within the Ministry publication "Design Guidelines for Drinking Water Systems, 2008", as amended from time to time.
- 3.1.2 The maximum demand for water exerted by consumers who are serviced by the addition, modification, replacement or extension of the watermain will not result in an exceedance of the rated capacity of a treatment subsystem or the maximum flow rate for a treatment subsystem component as specified in the licence, or the creation of adverse conditions within the drinking water system.
- 3.1.3 The watermain addition, modification, replacement or extension will not adversely affect the distribution system's ability to maintain a minimum pressure of 140 kPa at ground level at all points in the distribution system under maximum day demand plus fire flow conditions.
- 3.1.4 Secondary disinfection will be provided to water within the added, modified, replaced or extended watermain to meet the requirements of O. Reg. 170/03.
- 3.1.5 The watermain addition, modification, replacement or extension is wholly located within the municipal boundary over which the owner has jurisdiction.
- 3.1.6 The owner of the drinking water system consents in writing to the watermain addition, modification, replacement or extension.
- 3.1.7 A licensed engineering practitioner has verified in writing that the watermain addition, modification, replacement or extension meets the requirements of condition 3.1.1.
- 3.1.8 The owner of the drinking water system has verified in writing that the watermain addition, modification, replacement or extension meets the requirements of conditions 3.1.2 to 3.1.6.
- 3.2 The authorization for the addition, modification, replacement or extension of a watermain provided for in condition 3.1 does not include the addition, modification, replacement or extension of a watermain that:
- 3.2.1 Passes under or through a body of surface water, unless trenchless construction methods are used;
  - 3.2.2 Has a nominal diameter greater than 750 mm;
  - 3.2.3 Results in the fragmentation of the drinking water system; or
  - 3.2.4 Connects to another drinking water system, unless:

- a) Prior to construction, the owner of the drinking water system seeking the connection obtains written consent from the owner or owner's delegate of the drinking water system being connected to; and
  - b) The owner of the drinking water system seeking the connection retains a copy of the written consent from the owner or owner's delegate of the drinking water system being connected to as part of the record that is recorded and retained under condition 3.3.
- 3.3 The verifications required in conditions 3.1.7 and 3.1.8 shall be:
  - 3.3.1 Recorded on "Form 1 – Record of Watermains Authorized as a Future Alteration", as published by the Ministry, prior to the watermain addition, modification, replacement or extension being placed into service; and
  - 3.3.2 Retained for a period of ten (10) years by the owner.
- 3.4 For greater certainty, the verification requirements set out in condition 3.3 do not apply to any addition, modification, replacement or extension in respect of the drinking water system which:
  - 3.4.1 Is exempt from subsection 31(1) of the SDWA by subsection 9.(2) of O. Reg. 170/03; or
  - 3.4.2 Constitutes maintenance or repair of the drinking water system.
- 3.5 The document or file referenced in Column 1 of Table 1 of Schedule A of this drinking water works permit that sets out watermains shall be retained by the owner and shall be updated to include watermain additions, modifications, replacements and extensions within 12 months of the addition, modification, replacement or extension.
- 3.6 The updates required by condition 3.5 shall include watermain location relative to named streets or easements and watermain diameter.
- 3.7 Despite clause (a) of condition 3.1.1 and condition 3.1.7, with respect to the replacement of an existing watermain or section of watermain that is 6.1 meters in length or less, if a licensed engineering practitioner has:
  - 3.7.1 inspected the replacement prior to it being put into service;
  - 3.7.2 prepared a reporting confirming that the replacement satisfies clauses (b), (c) and (d) of condition 3.1.1 (i.e. "Form 1 – Record of Watermains Authorized by a Future Alteration" (Form 1), Part 3, items No. 2, 3 and 4); and
  - 3.7.3 appended the report referred to in condition 3.7.2 to the completed Form 1,

the replacement is exempt from the requirements that the design of the replacement be prepared by a licensed engineering practitioner and that a licensed engineering practitioner verify on Form 1, Part 3, item No. 1 that a licensed engineering practitioner prepared the design of the replacement.

- 3.8 For greater certainty, the exemption in condition 3.7 does not apply to the replacement of an existing watermain or section of watermain if two or more sections of pipe, each of which is 6.1 meters in length or less, are joined together, if the total length of replacement pipes joined together is greater than 6.1 meters.

#### 4.0 Minor Modifications to the Drinking Water System

- 4.1 The drinking water system may be altered by adding, modifying or replacing the following components in the drinking water system:
- 4.1.1 Coagulant feed systems in the treatment system, including the location and number of dosing points:
    - a) Prior to making any alteration to the drinking water system under condition 4.1.1, the owner shall undertake a review of the impacts that the alteration might have on corrosion control or other treatment processes; and
    - b) The owner shall notify the Director in writing within thirty (30) days of any alteration made under condition 4.1.1 and shall provide the Director with a copy of the review.
    - c) The notification required in condition 4.1.1 b) shall be submitted using the "Director Notification Form" published by the Ministry
  - 4.1.2 Instrumentation and controls, including new SCADA systems and upgrades to SCADA system hardware;
  - 4.1.3 SCADA system software or programming that:
    - a) Measures, monitors or reports on a regulated parameter;
    - b) Measures, monitor or reports on a parameter that is used to calculate CT; or,
    - c) Calculates CT for the system or is part of the process algorithm that calculates log removal, where the impacts of addition, modification or replacement have been reviewed by a licensed engineering practitioner;
  - 4.1.4 Filter media, backwashing equipment, filter troughs, and under-drains and associated equipment in the treatment system;
  - 4.1.5 Spill containment works; or,
  - 4.1.6 Coarse screens and fine screens
- 4.2 The drinking water system may be altered by adding, modifying, replacing or removing the following components in the drinking water system:
- 4.2.1 Treated water pumps, pressure tanks, and associated equipment;
  - 4.2.2 Raw water pumps and process pumps in the treatment system;

- 4.2.3 Inline booster pumping stations that are not associated with distribution system storage facilities and are on a watermain with a nominal diameter not exceeding 200 mm;
- 4.2.4 Re-circulation devices within distribution system storage facilities;
- 4.2.5 In-line mixing equipment;
- 4.2.6 Chemical metering pumps and chemical handling pumps;
- 4.2.7 Chemical storage tanks (excluding fuel storage tanks) and associated equipment; or,
- 4.2.8 Measuring and monitoring devices that are not required by regulation, by a condition in the Drinking Water Works Permit, or by a condition otherwise imposed by the Ministry.
- 4.2.9 Chemical injection points.
- 4.2.10 Valves;
- 4.3 The drinking water system may be altered by replacing the following:
  - 4.3.1 Raw water piping, treatment process piping or treated water piping within the treatment subsystem;
  - 4.3.2 Measuring and monitoring devices that are required by regulation, by a condition in the Drinking Water Works Permit or by a condition otherwise imposed by the Ministry.
  - 4.3.3 Coagulants and pH adjustment chemicals, where the replacement chemicals perform the same function;
    - a) Prior to making any alteration to the drinking water system under condition 4.3.3, the owner shall undertake a review of the impacts that the alteration might have on corrosion control or other treatment processes; and
    - b) The owner shall notify the Director in writing within thirty (30) days of any alteration made under condition 4.3.3 and shall provide the Director with a copy of the review.
    - c) The notification required in condition 4.3.3 b) shall be submitted using the "Director Notification Form" published by the Ministry
- 4.4 Any alteration of the drinking water system made under conditions 4.1, 4.2 or 4.3 shall not result in:
  - 4.4.1 An exceedance of a treatment subsystem rated capacity or a treatment subsystem component maximum flow rate as specified in the licence;
  - 4.4.2 The bypassing or removal of any unit process within a treatment subsystem;

- 4.4.3 The addition of any new unit process other than coagulation within a treatment subsystem;
- 4.4.4 A deterioration in the quality of drinking water provided to consumers;
- 4.4.5 A reduction in the reliability or redundancy of any component of the drinking water system;
- 4.4.6 A negative impact on the ability to undertake compliance and other monitoring necessary for the operation of the drinking water system; or
- 4.4.7 An adverse effect on the environment.
- 4.5 The owner shall verify in writing that any addition, modification, replacement or removal of drinking water system components in accordance with conditions 4.1, 4.2 or 4.3 has met the requirements of the conditions listed in condition 4.4.
- 4.6 The verifications and documentation required in condition 4.5 shall be:
  - 4.6.1 Recorded on “Form 2 – Record of Minor Modifications or Replacements to the Drinking Water System” published by the Ministry, prior to the modified or replaced components being placed into service; and
  - 4.6.2 Retained for a period of ten (10) years by the owner.
- 4.7 For greater certainty, the verification requirements set out in conditions 4.5 and 4.6 do not apply to any addition, modification, replacement or removal in respect of the drinking water system which:
  - 4.7.1 Is exempt from subsection 31(1) of the SDWA by subsection 9.(2) of O. Reg. 170/03; or
  - 4.7.2 Constitutes maintenance or repair of the drinking water system, including software changes to a SCADA system that are not listed in condition 4.1.3
- 4.8 The owner shall update any drawings maintained for the drinking water system to reflect the modification or replacement of the works, where applicable.

## 5.0 Equipment with Emissions to the Air

- 5.1 The drinking water system may be altered by adding, modifying or replacing any of the following drinking water system components that may discharge or alter the rate or manner of a discharge of a compound of concern to the air:
  - 5.1.1 Any equipment, apparatus, mechanism or thing that is used for the transfer of outdoor air into a building or structure that is not a cooling tower;
  - 5.1.2 Any equipment, apparatus, mechanism or thing that is used for the transfer of indoor air out of a space used for the production, processing, repair, maintenance or storage of goods or materials, including chemical storage;

- 5.1.3 Laboratory fume hoods used for drinking water testing, quality control and quality assurance purposes;
  - 5.1.4 Low temperature handling of compounds with a vapor pressure of less than 1 kilopascal;
  - 5.1.5 Maintenance welding stations;
  - 5.1.6 Minor painting operations used for maintenance purposes;
  - 5.1.7 Parts washers for maintenance shops;
  - 5.1.8 Emergency chlorine and ammonia gas scrubbers and absorbers;
  - 5.1.9 Venting for activated carbon units for drinking water taste and odour control;
  - 5.1.10 Venting for a stripping unit for methane removal from a groundwater supply;
  - 5.1.11 Venting for an ozone treatment unit;
  - 5.1.12 Natural gas or propane fired boilers, water heaters, space heaters and make-up air units with a total facility-wide heat input rating of less than 20 million kilojoules per hour, and with an individual fuel energy input of less than or equal to 10.5 gigajoules per hour; or
  - 5.1.13 Emergency generators that fire No. 2 fuel oil (diesel fuel) with a sulphur content of 0.5 per cent or less measured by weight, natural gas, propane, gasoline or biofuel, and that are used for emergency duty only with periodic testing.
- 5.2 The owner shall not make an addition, modification, or replacement described in condition 5.1 in relation to an activity that is not related to the treatment and/or distribution of drinking water.
- 5.3 The emergency generators identified in condition 5.1.13 shall not be used for non-emergency purposes including the generation of electricity for sale or for peak shaving purposes.
- 5.4 The owner shall prepare an emission summary table for nitrogen oxides emissions only, for each addition, modification or replacement of emergency generators identified in condition 5.1.13.

### Performance Limits

- 5.5 The owner shall ensure that a drinking water system component identified in conditions 5.1.1 to 5.1.13 is operated at all times to comply with the following limits:
- 5.5.1 For equipment other than emergency generators, the maximum concentration of any compound of concern at a point of impingement shall not exceed the corresponding point of impingement limit;

- 
- 5.5.2 For emergency generators, the maximum concentration of nitrogen oxides at sensitive receptors shall not exceed the applicable point of impingement limit, and at non-sensitive receptors shall not exceed the Ministry half-hourly screening level of 1880 ug/m<sup>3</sup> as amended; and
- 5.5.3 The noise emissions comply at all times with the limits set out in publication NPC-300, as applicable.
- 5.6 The owner shall verify in writing that any addition, modification or replacement of works in accordance with condition 5.1 has met the requirements of the conditions listed in condition 5.5.
- 5.7 The owner shall document how compliance with the performance limits outlined in condition 5.5.3 is being achieved, through noise abatement equipment and/or operational procedures.
- 5.8 The verifications and documentation required in conditions 5.6 and 5.7 shall be:
- 5.8.1 Recorded on "Form 3 – Record of Addition, Modification or Replacement of Equipment Discharging a Contaminant of Concern to the Atmosphere", as published by the Ministry, prior to the additional, modified or replacement equipment being placed into service; and
- 5.8.2 Retained for a period of ten (10) years by the owner.
- 5.9 For greater certainty, the verification and documentation requirements set out in conditions 5.6 and 5.8 do not apply to any addition, modification or replacement in respect of the drinking water system which:
- 5.9.1 Is exempt from subsection 31(1) of the SDWA by subsection 9.(2) of O. Reg. 170/03; or
- 5.9.2 Constitutes maintenance or repair of the drinking water system.
- 5.10 The owner shall update any drawings maintained for the works to reflect the addition, modification or replacement of the works, where applicable.

## 6.0 Previously Approved Works

- 6.1 The owner may add, modify, replace or extend, and operate part of a municipal drinking water system if:
- 6.1.1 An approval was issued after January 1, 2004 under section 36 of the SDWA in respect of the addition, modification, replacement or extension and operation of that part of the municipal drinking water system;
- 6.1.2 The approval expired by virtue of subsection 36(4) of the SDWA; and
- 6.1.3 The addition, modification, replacement or extension commenced within five years of the date that activity was approved by the expired approval.

**7.0 System-Specific Conditions**

- 7.1 The owner of the system shall notify the Director in writing by October 31st, 2021 of a plan to address raw water total coliform exceedances in Wells CPW1 and CPW2.

**8.0 Source Protection**

- 8.1 Not Applicable.

## Schedule C: Authorization to Alter the Drinking Water System

System Owner	The Corporation of the Municipality of Arran-Elderslie
Permit Number	079-202
Drinking Water System Name	Arran-Elderslie Drinking Water System
Permit Effective Date	January 8th, 2021

### 1.0 General

- 1.1 Table 2 provides a reference list of all documents to be incorporated into Schedule C that have been issued as of the date that this permit was issued.

- 1.1.1 Table 2 is not intended to be a comprehensive list of all documents that are part of Schedule C. For clarity, any document issued by the Director to be incorporated into Schedule C after this permit has been issued is considered part of this drinking water works permit.

Table 2: Schedule C Documents				
Column 1 Issue #	Column 2 Issued Date	Column 3 Description	Column 4 Status	Column 5 DN #
Sch. C Issue 1	May 2, 2013	Backwash Dechlorination System	Archived	DN #2

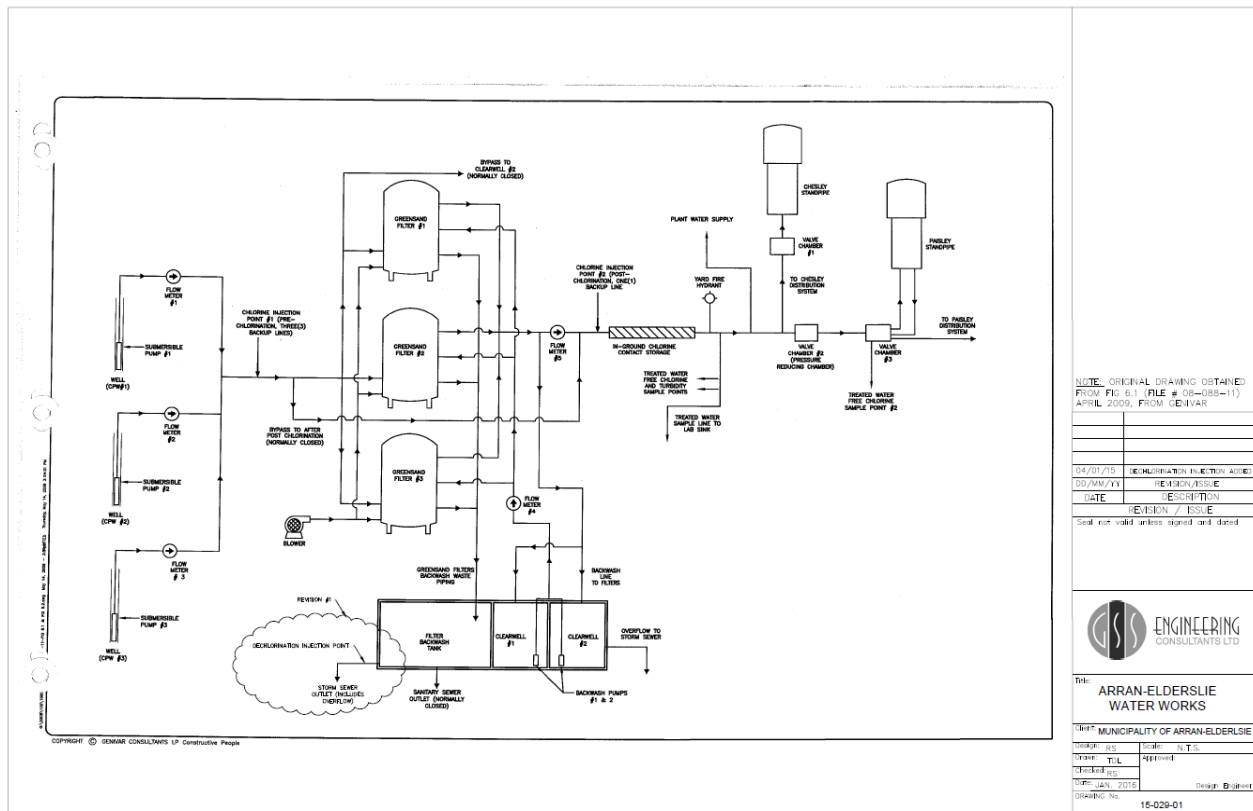
- 1.2 For each document described in columns 1, 2 and 3 of Table 2, the status of the document is indicated in column 4. Where this status is listed as 'Archived', the approved alterations have been completed and relevant portions of this permit have been updated to reflect the altered works. These 'Archived' Schedule C documents remain as a record of the alterations.

## Schedule D: Process Flow Diagrams

System Owner	The Corporation of the Municipality of Arran-Elderslie
Permit Number	079-202
Drinking Water System Name	Arran-Elderslie Drinking Water System
Permit Effective Date	January 8th, 2021

### 1.0 Process Flow Diagrams

#### Arran-Elderslie Water Treatment Plant



[Source: 'AE Schematic Flow Diagram.pdf' dated January 2016 and received December 2020]

Note: This process flow diagram is for reference only, and represents a high level overview of the system as of December 2020.

## **APPENDIX D**

### **WATER METER CALIBRATION**

## Tower Electronics Canada Inc. Calibration Certificate

**Customer:**

Municipality of Arran-Elderslie  
Mark O'leary  
Water Foreman  
[Water@arran-elderslie.ca](mailto:Water@arran-elderslie.ca)

**Calibration by:**

Dan Matchett

**Standards:**

Endress and Hauser Field Check S/N:0000551303 Cal Due 3-15-22

**Instrument Type**

Magnetic Flow Meter

**Meter Information**

Date of Test: 4/6/2021  
Location: Chesley WTP  
Meter Under Test: Distribution Flow  
Client Tag: F-5  
Manufacturer: Endress Hauser  
Model: Promag 50W  
Serial Number: 79051D16000  
Totalizer As Found: 5522068M3  
Totalizer As Left: 5522097M3

**Programming Parameters:**

DN Size: DN200  
Cal Factor: 1.0550  
Zero: 0

Calibration Due: April 2022

**Method of verification**

EnH Field Check Verification/Calibration

**Units:** LPS  
**Zero:** 0.00  
**Span:** 100.00  
**Totalizer:** M3

**Flow Test**

Sim Setting	Sim Flow LPS	Meter Display	Current Output	Disp Error%	mA Error %
0.000	0.000	0.000	4.002	0.000	0.050
25.000	25.000	24.949	7.997	0.051	0.038
50.000	50.000	49.972	11.997	0.028	0.025
75.000	75.000	74.985	16.011	0.015	0.069
100.000	100.000	100.020	20.017	0.020	0.085
Average Error%				0.02	0.05
Result:				PASS	PASS

**Totalizer Test**

Sim Flow Rate	100.000	LPS
Start Totalizer	5522089.000	M3
End Totalizer	5522096.000	M3
Volume Simulated	7.000	M3
Time(Seconds)	69.520	
Calculated Totalizer(MUT)	6.952	
Error%	0.690	
Result:	PASS	

**Comments:**

Unit passes verification.

## Tower Electronics Canada Inc. Calibration Certificate

**Customer:**

Municipality of Arran-Elderslie  
Mark O'leary  
Water Foreman  
[Water@arran-elderslie.ca](mailto:Water@arran-elderslie.ca)

**Calibration by:**

Dan Matchett

**Standards:**

Endress and Hauser Field Check S/N:0000551303 Cal Due 3-15-22

**Instrument Type**

Magnetic Flow Meter

**Meter Information**

Date of Test: 4/6/2021  
Location: Chesley WTP  
Meter Under Test: Well 1 Raw  
Client Tag: F1  
Manufacturer: Endress Hauser  
Model: Promag 50W  
Serial Number: 7903D616000  
Totalizer As Found: 1729272M3  
Totalizer As Left: 1729282M3

**Programming Parameters:**

DN Size: DN150  
Cal Factor: 1.0064  
Zero: 0

Calibration Due: April 2022

**Method of verification**

EnH Field Check Verification/Calibration

**Units:**

LPS

**Zero:**

0.00

**Span:**

50.00

**Totalizer:**

M3

**Flow Test**

Sim Setting	Sim Flow LPS	Meter Display	Current Output	Disp Error%	mA Error %
0.000	0.000	0.000	4.002	0.000	0.050
12.500	12.500	12.500	7.994	0.000	0.075
25.000	25.000	25.000	11.995	0.000	0.042
37.500	37.500	37.500	15.994	0.000	0.038
50.000	50.000	50.000	20.006	0.000	0.030
Average Error%				0.00	0.05
Result:				PASS	PASS

**Totalizer Test**

Sim Flow Rate	50.000	LPS
Start Totalizer	1729278.000	M3
End Totalizer	1729282.000	M3
Volume Simulated	4.000	M3
Time(Seconds)	78.870	
Calculated Totalizer(MUT)	3.944	
Error%	1.433	
Result:	PASS	

**Comments:**

Unit passes verification.

## Tower Electronics Canada Inc. Calibration Certificate

**Customer:**

Municipality of Arran-Elderslie  
Mark O'leary  
Water Foreman  
[Water@arran-elderslie.ca](mailto:Water@arran-elderslie.ca)

**Calibration by:**

Dan Matchett

**Standards:**

Endress and Hauser Field Check S/N:0000551303 Cal Due 3-15-22

**Instrument Type**

Magnetic Flow Meter

**Meter Information**

Date of Test: 4/6/2021  
Location: Chesley WTP  
Meter Under Test: Well 2 Raw  
Client Tag: F2  
Manufacturer: Endress Hauser  
Model: Promag 50W  
Serial Number: 79051A16000  
Totalizer As Found: 1948500M3  
Totalizer As Left: 1948518M3

**Programming Parameters:**

DN Size: DN200  
Cal Factor: 1.0453  
Zero: 0

Calibration Due: April 2022

**Method of verification**

EnH Field Check Verification/Calibration

**Units:** LPS  
**Zero:** 0.00  
**Span:** 100.00  
**Totalizer:** M3

**Flow Test**

Sim Setting	Sim Flow LPS	Meter Display	Current Output	Disp Error%	mA Error %
0.000	0.000	0.000	4.000	0.000	0.000
25.000	25.000	25.000	7.998	0.000	0.025
50.000	50.000	50.000	12.002	0.000	0.017
75.000	75.000	75.000	16.002	0.000	0.012
100.000	100.000	99.900	20.015	0.100	0.075
Average Error%				0.02	0.03
Result:				PASS	PASS

**Totalizer Test**

Sim Flow Rate	100.000	LPS
Start Totalizer	1948510.000	M3
End Totalizer	1948518.000	M3
Volume Simulated	8.000	M3
Time(Seconds)	79.470	
Calculated Totalizer(MUT)	7.947	
Error%	0.667	
Result:	PASS	

**Comments:**

Unit passes verification.

## Tower Electronics Canada Inc. Calibration Certificate

**Customer:**

Municipality of Arran-Elderslie  
Mark O'leary  
Water Foreman  
[Water@arran-elderslie.ca](mailto:Water@arran-elderslie.ca)

**Calibration by:**

Dan Matchett

**Standards:**

Endress and Hauser Field Check S/N:0000551303 Cal Due 3-15-22

**Instrument Type**

Magnetic Flow Meter

**Meter Information**

Date of Test: 4/6/2021  
Location: Chesley WTP  
Meter Under Test: Well 3 Raw  
Client Tag: F3  
Manufacturer: Endress Hauser  
Model: Promag 50W  
Serial Number: 79051B16000  
Totalizer As Found: 2020629M3  
Totalizer As Left: 2020651M3

**Programming Parameters:**

DN Size: DN200  
Cal Factor: 1.0501  
Zero: 0

Calibration Due: April 2022

**Method of verification**

EnH Field Check Verification/Calibration

**Units:** LPS  
**Zero:** 0.00  
**Span:** 100.00  
**Totalizer:** M3

**Flow Test**

Sim Setting	Sim Flow LPS	Meter Display	Current Output	Disp Error%	mA Error %
0.000	0.000	0.000	4.002	0.000	0.050
25.000	25.000	25.000	7.998	0.000	0.025
50.000	50.000	50.000	11.995	0.000	0.042
75.000	75.000	75.000	16.007	0.000	0.044
100.000	100.000	99.900	20.010	0.100	0.050
Average Error%				0.02	0.04
Result:				PASS	PASS

**Totalizer Test**

Sim Flow Rate	100.000	LPS
Start Totalizer	2020643.000	M3
End Totalizer	2020650.000	M3
Volume Simulated	7.000	M3
Time(Seconds)	70.790	
Calculated Totalizer(MUT)	7.079	
Error%	-1.116	
Result:	PASS	

**Comments:**

Unit passes verification.

## Tower Electronics Canada Inc. Calibration Certificate

**Customer:**

Municipality of Arran-Elderslie  
Mark O'leary  
Water Foreman  
[Water@arran-elderslie.ca](mailto:Water@arran-elderslie.ca)

**Calibration by:**

Dan Matchett

**Standards:**

Endress and Hauser Field Check S/N:0000551303 Cal Due 3-15-22

**Instrument Type**

Magnetic Flow Meter

**Meter Information**

Date of Test: 4/6/2021  
Location: 25 Side Road  
Meter Under Test: Boundary Distribution Meter  
Client Tag: n/a  
Manufacturer: Endress Hauser  
Model: Promag 50W  
Serial Number: 7A045816000  
Totalizer As Found: 1759627M3  
Totalizer As Left: 1759663M3

**Programming Parameters:**

DN Size: DN200  
Cal Factor: 1.046  
Zero: 0

Calibration Due: April 2022

**Method of verification**

EnH Field Check Verification/Calibration

**Units:** LPS  
**Zero:** 0.00  
**Span:** 100.00  
**Totalizer:** M3

**Flow Test**

Sim Setting	Sim Flow LPS	Meter Display	Current Output	Disp Error%	mA Error %
0.000	0.000	0.000	4.005	0.000	0.125
25.000	25.000	24.906	7.989	0.094	0.138
50.000	50.000	49.848	11.978	0.152	0.183
75.000	75.000	74.799	15.982	0.201	0.113
100.000	100.000	99.749	19.936	0.251	0.320
Average Error%				0.14	0.18
Result:				PASS	PASS

**Totalizer Test**

Sim Flow Rate	100.000	LPS
Start Totalizer	1759653.000	M3
End Totalizer	1759663.000	M3
Volume Simulated	10.000	M3
Time(Seconds)	100.570	
Calculated Totalizer(MUT)	10.057	
Error%	-0.567	
Result:	PASS	

**Comments:**

Unit passes verification.

**APPENDIX E**

**MECP INSPECTION REPORT**

**Ministry of the Environment,  
Conservation and Parks**

Drinking Water and Environmental  
Compliance Division

Owen Sound District Office  
101 17<sup>th</sup> St. E., 3<sup>rd</sup> Floor  
Owen Sound ON N4K 0A5

**Ministère de l'Environnement,  
de la Protection de la nature et  
des Parcs**

Division de la conformité en matière d'eau  
potable et d'environnement

Bureau du district de Owen Sound  
101, 17<sup>e</sup> rue Est, 3<sup>e</sup> étage  
Owen Sound ON N4K 0A5



October 4, 2021

**Sent by Email: [cao@arran-elderslie.ca](mailto:cao@arran-elderslie.ca)**

Municipality of Arran-Elderslie  
1925 Bruce County Road 10  
Chesley, Ontario  
N0G 1L0

Attention: Mr. Bill Jones, CAO/Clerk

Re: 2021/2022 Inspection Report  
Arran Elderslie Drinking Water System  
Drinking Water Works Permit 079-202, Issue 5  
Municipal Drinking Water License 079-102, Issue 4

Thank-you for your cooperation as we continue to work through an altered inspection process due to restrictions surrounding COVID this year. The enclosed report documents findings of the inspection on June 17, 2021. Please note that due to a change in IT systems, the Inspection Rating Report (IRR) cannot be generated at the same time as the inspection report. The IRR will be sent separately and prior to any public release.

Two sections of the report, namely "Actions Required" and "Recommended Actions", specify due dates for the submission of information or plans to my attention. Please note that "Actions Required" are linked to incidents of non-compliance with regulatory requirements contained within an Act, a Regulation, or site-specific approvals, orders or instructions; "Recommended Actions" convey information that the owner or operating authority should consider implementing in order to conform with existing and emerging industry standards.

The report includes an Inspection Summary Rating Record as an appendix. This record forms part of the ministry's comprehensive, risk-based inspection process. The rating provides a quantitative measure of the inspection results for this specific drinking water system for the reporting year. An inspection rating that is less than 100 per cent does not mean that the drinking water from the system is unsafe. The primary goals of this assessment are to encourage ongoing improvement of drinking water systems and to measure this progress from year to year.

I would like to remind you that Section 19 of the Safe Drinking Water Act, 2002 (Standard of Care) creates a number of obligations for individuals who exercise decision-making authority over municipal drinking water systems, including members of municipal councils. "Taking Care of Your Drinking Water: A guide for members of municipal council", a publication found on the [Drinking Water Ontario website](http://www.ontario.ca/environment-and-energy/municipal-drinking-water-systems-licencing-registration-and-permits) (<http://www.ontario.ca/environment-and-energy/municipal-drinking-water-systems-licencing-registration-and-permits>), provides further information about these obligations.

Should you have any questions regarding the content of the enclosed report, please do not hesitate to contact me.

Yours truly,

A handwritten signature in black ink that reads "Rhonda Shannon". The signature is fluid and cursive, with a long horizontal stroke at the end.

Rhonda Shannon

Water Compliance Inspector

Phone: 226-668-5873

e-mail: Rhonda.shannon@ontario.ca

Enclosure

cc: Dr. Ian Arra, Medical Officer of Health, Grey-Bruce Health Unit  
Scott McLeod, Public Works Manager, Municipality of Arran-Elderslie  
Mark O'Leary, Water/Sewer Foreman, Municipality of Arran-Elderslie  
Nancy Guest, Administrative Assistant, Source Protection Program Branch  
Mark Smith, Water Compliance Supervisor, Ministry of Environment, Conservation and Parks

File SI-BR-AE-FO-540 (2021)

c:



ARRAN-ELDERSLIE DRINKING WATER SYSTEM  
129 4TH AVE SE, ARRAN-ELDERSLIE, ON, N0G 1L0  
**Inspection Report**

System Number: 220002725  
Inspection Start Date: 06/17/2021  
Inspection End Date: 10/04/2021  
Inspected By: Rhonda Shannon  
Badge #:

  
(signature)

### **NON-COMPLIANCE/NON-CONFORMANCE ITEMS**

This should not be construed as a confirmation of full compliance with all potential applicable legal requirement and BMPs. These inspection findings are limited to the components and/or activities that were assessed, and the legislative framework(s) that were applied. It remains the responsibility of the owner to ensure compliance with all applicable legislative and regulatory requirements.

If you have any questions related to this inspection, please contact the undersigned Provincial Officer.

## INSPECTION DETAILS

This section includes all questions that were assessed during the inspection.

**Ministry Program: Regulated Activity:** DRINKING WATER : DW Municipal Residential

Question ID	MRDW1001000		
Question	Question Type	Legislative Requirement	
What was the scope of this inspection?	Information	Not Applicable	
Observation			
<p>The primary focus of this inspection is to confirm compliance with Ministry of the Environment, Conservation and Parks (MECP) legislation as well as evaluating conformance with ministry drinking water policies and guidelines during the inspection period. The ministry utilizes a comprehensive, multi-barrier approach in the inspection of water systems that focuses on the source, treatment, and distribution components as well as management practices.</p> <p>This drinking water system is subject to the legislative requirements of the Safe Drinking Water Act, 2002 (SDWA) and regulations made therein, including Ontario Regulation 170/03, "Drinking Water Systems" (O.Reg. 170/03). This inspection has been conducted pursuant to Section 81 of the SDWA.</p> <p>This inspection report does not suggest that all applicable legislation and regulations were evaluated. It remains the responsibility of the owner to ensure compliance with all applicable legislative and regulatory requirements.</p> <p>A drinking water inspection was conducted on June 17, 2021 at the Arran-Elderslie drinking water facility with Chris Legge, OIC and included a tour of the treatment facility and both standpipes. This inspection covers the time period of July 15, 2020 to June 15, 2021.</p> <p>The Municipality of Arran-Elderslie owns and operates this facility located at 129 4th Avenue SE, Chesley Ontario as well as a standpipe in Chesley (84 Tower Road, Chesley) and a standpipe/re-chlorination station in Paisley (281 Alma Street, Paisley). The system currently has approximately 1500 connections with an approximate population of 3,387 served by these facilities.</p> <p>It is noted that the most current Municipal Drinking Water Licence (MDWL) and Municipal Drinking Water Permit (DWWP) were issued on January 7, 2021.</p>			

Question ID	MRDW1000000		
Question		Question Type	Legislative Requirement
Does this drinking water system provide primary disinfection?		Information	Not Applicable
Observation			

This Drinking Water System provides for both primary and secondary disinfection and distribution of water.

Primary disinfection is achieved through chlorination to meet a 2-log inactivation of viruses for all three (3) wells, as required in Schedule E of Licence #079-102, Issue No. 4.

Question ID	MRDW1007000		
Question	Question Type	Legislative Requirement	
Is the owner maintaining the production well(s) in a manner sufficient to prevent entry into the well of surface water and other foreign materials?	Legislative	SDWA   O. Reg. 170/03   1-2   (1)	
Observation			
The owner was maintaining the production well(s) in a manner sufficient to prevent entry into the well of surface water and other foreign materials.			
All three (3) production wells continue to be located in well maintained, pad-locked, concrete well tiles on the site. Well casings remain secured inside these tiles with a vermin-proof cap that is also locked. Weekly inspections of all the wells continue to be reported, along with preventative maintenance activities.			
Sampling of raw water in the last 5 years has shown a minimal total coliform presence, with all results between 1 to 8 cfu/100 mL. The majority of these events were sampled from Well #1 and #2. There were only two coliform results reported during this inspection period and no results showing the presence of E.coli in any of the wells during the 5-years assessed.			

Question ID	MRDW1009000		
Question	Question Type	Legislative Requirement	
Are measures in place to protect the groundwater and/or GUDI source in accordance with any MDWL and DWWP issued under Part V of the SDWA?	Legislative	SDWA   31   (1)	
Observation			
Measures were in place to protect the groundwater and/or GUDI source in accordance with any the Municipal Drinking Water Licence and Drinking Water Works Permit issued under Part V of the SDWA.			
The process map diagrams from January 2016 remains current and is available at the plant, municipal office, in the Operations Manual and in Schedule D of the Drinking Water Works Permit. As well, the Operations Manual (OM) and Emergency Response Plan (ERP) includes the following procedures:			
<ul style="list-style-type: none"><li>• Groundwater Preventative Maintenance Duties (Section A of OM)</li><li>• Daily Log Book and Complaints (Section J of OM)</li><li>• Well Inspection and Maintenance Plan (Appendix E, OM)</li></ul>			

- Leak Detection and Zone Flow Techniques (SOP 7)
  - Chemical Spills, Pumphouses (SOP 14)
  - Aquifer Contamination (ERP 1)
  - Clear Well/Standpipe Contamination (ERP 2)
  - Flooding (ERP 4)
- All Standard Operating Procedures, Emergency Response Plans and the Operations Manual are reviewed by administration every 2 years as part of the Municipality's internal policy.

Question ID	MRDW1010000		
Question		Question Type	Legislative Requirement
Are trends in source water quality being monitored?		BMP	Not Applicable
Observation			
Trends in source water quality were being monitored.			
Trends in the source water are monitored through routine microbiological sampling as well as Schedule 23 and 24 sampling.			

Question ID	MRDW1014000		
Question		Question Type	Legislative Requirement
Is there sufficient monitoring of flow as required by the MDWL or DWWP issued under Part V of the SDWA?		Legislative	SDWA   31   (1)
Observation			
There was sufficient monitoring of flow as required by the Municipal Drinking Water Licence or Drinking Water Works Permit issued under Part V of the SDWA.			
Flows are measured prior to contact time and water being directed to the distribution system.			

Question ID	MRDW1015000		
Question		Question Type	Legislative Requirement
Are the flow measuring devices calibrated or verified in accordance with the requirements of the MDWL issued under Part V of the SDWA?		Legislative	SDWA   31   (1)
Observation			
The flow measuring devices were calibrated or verified in accordance with the requirements of the MDWL issued under Part V of the SWDA.			
Calibration is conducted annually for this drinking water system. During the time period reviewed, Tower Electronics Canada Inc. calibrated all production well flow meters on April 6, 2021. All meters were found to be within the acceptable tolerance range during calibration.			

<b>Question ID</b>	MRDW1016000	
<b>Question</b>	<b>Question Type</b>	<b>Legislative Requirement</b>
Is the owner in compliance with the conditions associated with maximum flow rate or the rated capacity conditions in the MDWL issued under Part V of the SDWA?	Legislative	SDWA   31   (1)
<b>Observation</b>		
<p>The owner was in compliance with the conditions associated with maximum flow rate or the rated capacity conditions in the Municipal Drinking Water Licence issued under Part V of the SDWA.</p> <p>The total rated capacity for this system is 5,564 m<sup>3</sup>/day with a maximum individual flow rate of 64.4 L/s from each well, as authorized under the DWS Licence No. 079-102, Issue 4.</p> <p>There were no flow exceedances nor flow monitoring anomalies found in the data reviewed. The maximum flow rated occurred in August 2020 with a combined flow of 1,865 cubic metres of water used, which represents approximately 34% of the total combined rated capacity allowed in the Licence.</p> <p>Each well pump also has a rated capacity listed in the Drinking Water Works Permit that corresponds to the system's Permit to Take Water. The Municipality previously took measures to limit the rated capacity exceedances at Well #2 noted in the last inspection; during this inspection period only one (1) such exceedance was recorded.</p>		

<b>Question ID</b>	MRDW1017000	
<b>Question</b>	<b>Question Type</b>	<b>Legislative Requirement</b>
Were appropriate records of flows and any capacity exceedances made in accordance with the MDWL issued under Part V of the SDWA?	Legislative	SDWA   31   (1)
<b>Observation</b>		
Appropriate records of flows and any capacity exceedances were made in accordance with the Municipal Drinking Water Licence issued under Part V of the SDWA.		

<b>Question ID</b>	MRDW1013000	
<b>Question</b>	<b>Question Type</b>	<b>Legislative Requirement</b>
Is the owner in compliance with all conditions of the PTTW?	Legislative	OWRA   34   (3)
<b>Observation</b>		
<p>The owner was in compliance with all conditions of the PTTW.</p> <p>This system operates under Permit to Take Water (PTTW) #3655-A3RPJL, issued on November 13, 2015 and expiring in September 29, 2025. The PTTW authorizes water taking of 1,800.2 cubic metres per day from Well #1, 2,127.5 cubic metres per day from Well #2 and 2,948.2 cubic</p>		

meters per day from Well #3.

Static water levels are recorded daily from each production well and monthly from observation wells, as required.

<b>Question ID</b>	MRDW1030000	
Question	Question Type	Legislative Requirement
Is primary disinfection chlorine monitoring being conducted at a location approved by MDWL and/or DWWP issued under Part V of the SDWA, or at/near a location where the intended CT has just been achieved?	Legislative	SDWA   O. Reg. 170/03   7-2   (1), SDWA   O. Reg. 170/03   7-2   (2)
<b>Observation</b>		
Primary disinfection chlorine monitoring was conducted at a location approved by Municipal Drinking Water Licence and/or Drinking Water Works Permit issued under Part V of the SDWA, or at/near a location where the intended CT has just been achieved.		

<b>Question ID</b>	MRDW1038000	
Question	Question Type	Legislative Requirement
Is continuous monitoring equipment that is being utilized to fulfill O. Reg. 170/03 requirements performing tests for the parameters with at least the minimum frequency specified in the Table in Schedule 6 of O. Reg. 170/03 and recording data with the prescribed format?	Legislative	SDWA   O. Reg. 170/03   6-5   (1) 1-4
<b>Observation</b>		
Continuous monitoring equipment that was being utilized to fulfill O. Reg. 170/03 requirements was performing tests for the parameters with at least the minimum frequency specified in the Table in Schedule 6 of O. Reg. 170/03 and recording data with the prescribed format.		
The online chlorine analyzers are reported to be recording residual information at 30 second intervals.		

<b>Question ID</b>	MRDW1036000	
Question	Question Type	Legislative Requirement
Where continuous monitoring equipment is not used for chlorine residual analysis, are samples tested using an acceptable portable device?	Legislative	SDWA   O. Reg. 170/03   6-7   (1)
<b>Observation</b>		
Samples for chlorine residual analysis were tested using an acceptable portable device.		

<b>Question ID</b>	MRDW1037000	
--------------------	-------------	--

Question	Question Type	Legislative Requirement
Are all continuous monitoring equipment utilized for sampling and testing required by O. Reg.170/03, or MDWL or DWWP or order, equipped with alarms or shut-off mechanisms that satisfy the standards described in Schedule 6?	Legislative	SDWA   O. Reg. 170/03   6-5   (1) 1-4,SDWA   O. Reg. 170/03   6-5   (1)5-10,SDWA   O. Reg. 170/03   6-5   (1.1)
<b>Observation</b>		
All continuous monitoring equipment utilized for sampling and testing required by O. Reg.170/03, or Municipal Drinking Water Licence or Drinking Water Works Permit or order, were equipped with alarms or shut-off mechanisms that satisfy the standards described in Schedule 6.		
The alarm set-points for the continuous chlorine monitors remain set at 0.64 mg/L (low) and 2.0 (high) for all production wells. The high turbidity alarm remains at 1.0 NTU.		
All alarms will trigger a lock out of the well pumps and subsequent water being directed to the distribution. Alarms are directed through a dialer to the on-call pager, followed by a sequential dial out of alternate numbers.		

<b>Question ID</b>	MRDW1035000	
Question	Question Type	Legislative Requirement
Are operators examining continuous monitoring test results and are they examining the results within 72 hours of the test?	Legislative	SDWA   O. Reg. 170/03   6-5   (1) 1-4,SDWA   O. Reg. 170/03   6-5   (1)5-10
<b>Observation</b>		
Operators were examining continuous monitoring test results and they were examining the results within 72 hours of the test.		
Continuous monitoring results are reviewed daily at the treatment facility. Daily reports and SCADA trends continue to be generated from the SCADA system, printed and any anomalies noted.		

<b>Question ID</b>	MRDW1040000	
Question	Question Type	Legislative Requirement
Are all continuous analysers calibrated, maintained, and operated, in accordance with the manufacturer's instructions or the regulation?	Legislative	SDWA   O. Reg. 170/03   6-5   (1) 1-4,SDWA   O. Reg. 170/03   6-5   (1)5-10

<b>Observation</b>
<p>All continuous analysers were calibrated, maintained, and operated, in accordance with the manufacturer's instructions or the regulation.</p> <p>Well #1, #2 and #3 flow meters were calibrated and passed calibration standards on April 6, 2020 by Tower Electronics Canada. Verification of the online chlorine analyzers are completed weekly with a hand held HACH colorimeter. Handheld colorimeters are calibrated annually by Nichol Water Services and were last calibrated on February 23, 2021. General trending of these weekly verifications is monitored closely to determine maintenance actions.</p> <p>Verification of the online turbidimeter is conducted weekly. Handheld turbidimeters are also calibrated annually by Nichol Water Services and were last calibrated on February 23, 2021.</p>

Question ID	MRDW1108000		
Question	Question Type	Legislative Requirement	
Where continuous monitoring equipment used for the monitoring of free chlorine residual, total chlorine residual, combined chlorine residual or turbidity, required by Regulation 170, an Order, MDWL, or DWWP issued under Part V, SDWA, has triggered an alarm or an automatic shut-off, did a qualified person respond in a timely manner and take appropriate actions?	Legislative	SDWA   O. Reg. 170/03   6-5   (1) 1-4,SDWA   O. Reg. 170/03   6-5   (1)5-10,SDWA   O. Reg. 170/03   6-5   (1.1)	
Observation	Where required continuous monitoring equipment used for the monitoring of chlorine residual and/or turbidity triggered an alarm or an automatic shut-off, a qualified person responded in a timely manner and took appropriate actions.		
A review of logbook entries for this inspection period indicates that appropriate actions and timelines were followed.			

Question ID	MRDW1033000		
Question		Question Type	Legislative Requirement
Is the secondary disinfectant residual measured as required for the large municipal residential distribution system?		Legislative	SDWA   O. Reg. 170/03   7-2   (3), SDWA   O. Reg. 170/03   7-2   (4)
Observation			
The secondary disinfectant residual was measured as required for the distribution system.			
Free chlorine residuals were found to be measured daily from a number of different locations within the distribution system.			

Question ID	MRDW1031000		
Question	Question Type	Legislative Requirement	
Are operators aware of the operational criteria necessary to achieve primary disinfection within the drinking water system?	BMP	Not Applicable	
Observation			
Operators were aware of the operational criteria necessary to achieve primary disinfection within the drinking water system.			
The minimum CT equivalent free chlorine residuals necessary for Well #1, Well #2 and Well #3 are outlined in a chart form according to corresponding flows (L/s). This chart is posted at the treatment plant for reference.			

Question ID	MRDW1018000		
Question	Question Type	Legislative Requirement	
Has the owner ensured that all equipment is installed in accordance with Schedule A and Schedule C of the Drinking Water Works Permit?	Legislative	SDWA   31   (1)	
Observation			
The owner had ensured that all equipment was installed in accordance with Schedule A and Schedule C of the Drinking Water Works Permit.			

Question ID	MRDW1020000		
Question	Question Type	Legislative Requirement	
Is the owner/operating authority able to demonstrate that, when required during the inspection period, Form 1 documents were prepared in accordance with their Drinking Water Works Permit?	Legislative	SDWA   31   (1)	
Observation			
The owner/operating authority was in compliance with the requirement to prepare Form 1 documents as required by their Drinking Water Works Permit during the inspection period.			
There were two (2) Form 1's recorded during this inspection period. On June 3, 2020 new watermain on 1st Avenue N and 3rd Street NW & 4th Street NE were installed to replace cast mains. Another watermain replacement occurred on October 6, 2020 at Nelson Street and Inkerman to Alma Street in Paisley.			

<b>Question ID</b>	MRDW1021000		
<b>Question</b>	<b>Question Type</b>	<b>Legislative Requirement</b>	
Is the owner/operating authority able to demonstrate that,	Legislative	SDWA   31   (1)	

when required during the inspection period, Form 2 documents were prepared in accordance with their Drinking Water Works Permit?		
<b>Observation</b>		
The owner/operating authority was in compliance with the requirement to prepare Form 2 documents as required by their Drinking Water Works Permit during the inspection period.		
There was one (1) Form 2 recorded during this inspection period for a motor replacement on Well #1, in August 2020.		

<b>Question ID</b>	MRDW1023000	
<b>Question</b>	<b>Question Type</b>	<b>Legislative Requirement</b>
Do records indicate that the treatment equipment was operated in a manner that achieved the design capabilities required under Ontario Regulation 170/03 or a DWWP and/or MDWL issued under Part V of the SDWA at all times that water was being supplied to consumers?	Legislative	SDWA   O. Reg. 170/03   1-2   (2)
<b>Observation</b>		
Records indicated that the treatment equipment was operated in a manner that achieved the design capabilities required under Ontario Regulation 170/03 or a Drinking Water Works Permit and/or Municipal Drinking Water Licence issued under Part V of the SDWA at all times that water was being supplied to consumers.		
Primary disinfection is achieved through chlorination to meet a 2-log inactivation of viruses for all three (3) wells, as required in Schedule E of Licence #079-102, Issue No. 4.		
The minimum CT equivalent free chlorine residuals necessary for Well #1, Well #2 and Well #3 are outlined in a chart form according to corresponding flows (L/s). This chart is posted at the treatment plant for reference. A minimum equivalent free chlorine residual, for combined flows, of 0.48 mg/L has been determined to be required to meet CT.		
Based on the records reviewed, this facility met current primary treatment requirements at all times during this inspection period.		

<b>Question ID</b>	MRDW1024000	
<b>Question</b>	<b>Question Type</b>	<b>Legislative Requirement</b>
Do records confirm that the water treatment equipment which provides chlorination or chloramination for secondary disinfection purposes was operated so that at all times and all locations in the distribution system the chlorine residual was never less than 0.05 mg/l free or 0.25 mg/l combined?	Legislative	SDWA   O. Reg. 170/03   1-2   (2)
<b>Observation</b>		
Records confirmed that the water treatment equipment which provides chlorination or		

chloramination for secondary disinfection purposes was operated so that at all times and all locations in the distribution system the chlorine residual was never less than 0.05 mg/l free or 0.25 mg/l combined.

According to the logsheets provided, chlorine residuals in the distribution system were greater than 0.05 mg/L free chlorine at all times during the inspection period reviewed.

Question ID	MRDW1025000		
Question	Question Type	Legislative Requirement	
Were all parts of the drinking water system that came in contact with drinking water (added, modified, replaced or extended) disinfected in accordance with a procedure listed in Schedule B of the Drinking Water Works Permit?	Legislative	SDWA   31   (1)	
Observation			
All parts of the drinking water system were disinfected in accordance with a procedure listed in Schedule B of the Drinking Water Works Permit.			

Question ID	MRDW1027000		
Question	Question Type	Legislative Requirement	
Does the owner have evidence indicating that all chemicals and materials which come in contact with water within the drinking water system have met all applicable AWWA and ANSI standards in accordance with the DWWP and MDWL issued under Part V of the SDWA?	Legislative	SDWA   31   (1)	
Observation	The owner had evidence indicating that all chemicals and materials that come in contact with water within the drinking water system met the AWWA and ANSI standards in accordance with the Municipal Drinking Water Licence and Drinking Water Works Permit issued under Part V of the SDWA.		

Question ID	MRDW1028000		
Question		Question Type	Legislative Requirement
Are up-to-date plans for the drinking water system kept in place, or made available in such a manner, that they may be readily viewed by all persons responsible for all or part of the operation of the drinking water system in accordance with the DWWP and MDWL issued under Part V of the SDWA?		Legislative	SDWA   31   (1)
Observation			
Up-to-date plans for the drinking water system were kept in a place, or made available in such a manner, that they could be readily viewed by all persons responsible for all or part of the			

operation of the drinking water system in accordance with the DWWP and MDWL issued under Part V of the SDWA.

<b>Question ID</b>	MRDW1043000	
<b>Question</b>	<b>Question Type</b>	<b>Legislative Requirement</b>
Are the process wastewater and residual solids/sludges being treated, handled and disposed of in accordance with the design requirements approved under the Drinking Water Works Permit and the Municipal Drinking Water Licence?	Legislative	SDWA   31   (1)
<b>Observation</b>		
The process wastewater and residual solids/sludges were treated, handled and disposed of in accordance with the design requirements approved under the Drinking Water Works Permit and the Municipal Drinking Water Licence.		

<b>Question ID</b>	MRDW1044000	
<b>Question</b>	<b>Question Type</b>	<b>Legislative Requirement</b>
Does the process wastewater discharge monitoring program and discharge quality comply with requirements established in the MDWL issued under Part V of the SDWA?	Legislative	SDWA   31   (1)
<b>Observation</b>		
The process wastewater discharge monitoring program and discharge quality complied with requirements established in the Municipal Drinking Water Licence Issued under Part V of the SDWA.		

<b>Question ID</b>	MRDW1046000	
<b>Question</b>	<b>Question Type</b>	<b>Legislative Requirement</b>
Is there a backflow prevention program, policy and/or bylaw in place that addresses cross connections and connections to high hazard facilities?	BMP	Not Applicable
<b>Observation</b>		
There is a backflow prevention program, policy and/or bylaw in place.		
The Municipal Bylaw #19-03, effective September 22, 2003, prohibits cross connections between non-municipal water sources and the municipal drinking water distribution system.		

<b>Question ID</b>	MRDW1047000	
<b>Question</b>	<b>Question Type</b>	<b>Legislative Requirement</b>
Does the owner have a program or maintain a schedule for routine cleanout, inspection and maintenance of reservoirs	BMP	Not Applicable

and elevated storage tanks within the distribution system?		
<b>Observation</b>		
The owner had a program or maintained a schedule for routine cleanout, inspection and maintenance of reservoirs and elevated storage tanks within the distribution system.		
The Chesley standpipe was last inspected by video in 2020 and the Paisley Standpipe in 2017. SOP1-AE Standpipes require this to be done every 6 years.		

<b>Question ID</b>	MRDW1048000	
<b>Question</b>	<b>Question Type</b>	<b>Legislative Requirement</b>
Has the owner implemented a program for the flushing of watermain as per industry standards?	BMP	Not Applicable
<b>Observation</b>		
The owner had implemented a program for the flushing of watermain as per industry standards.		
Hydrant flushing is typically done on an annual basis by municipal staff and was last completed in April and May of 2021.		

<b>Question ID</b>	MRDW1049000	
<b>Question</b>	<b>Question Type</b>	<b>Legislative Requirement</b>
Do records confirm that disinfectant residuals are routinely checked at the extremities and dead ends of the distribution system?	BMP	Not Applicable
<b>Observation</b>		
Records confirmed that disinfectant residuals were routinely checked at the extremities and "dead ends" of the distribution system.		

<b>Question ID</b>	MRDW1050000	
<b>Question</b>	<b>Question Type</b>	<b>Legislative Requirement</b>
Is there a program in place for inspecting and exercising valves?	BMP	Not Applicable
<b>Observation</b>		
A program was in place for inspecting and exercising valves.		
Inspecting and exercising valves was last completed in the spring of 2021.		

<b>Question ID</b>	MRDW1051000	
<b>Question</b>	<b>Question Type</b>	<b>Legislative Requirement</b>
Is there a program in place for inspecting and operating	BMP	Not Applicable

hydrants?		
<b>Observation</b>		
There was a program in place for inspecting and operating hydrants.		
Inspecting and operating hydrants was last completed in the spring of 2021.		

<b>Question ID</b>	MRDW1052000	
<b>Question</b>	<b>Question Type</b>	<b>Legislative Requirement</b>
Is there a by-law or policy in place limiting access to hydrants?	BMP	Not Applicable
<b>Observation</b>		
There was a by-law or policy in place limiting access to hydrants.		
Municipal bylaw #30-05 was passed on September 26, 2005 to control access to fire hydrants to drinking water operators, fire fighters of Chesley, Paisley and Tara as well as the Works Manager.		

<b>Question ID</b>	MRDW1053000	
<b>Question</b>	<b>Question Type</b>	<b>Legislative Requirement</b>
Is the Owner able to maintain proper pressures in the distribution system and is pressure monitored to alert the operator of conditions which may lead to loss of pressure below the value under which the system is designed to operate?	BMP	Not Applicable
<b>Observation</b>		
The owner was able to maintain proper pressures in the distribution system and pressure was monitored to alert the operator of conditions which may lead to loss of pressure below the value under which the system is designed to operate.		
Trending is available on the SCADA system.		

<b>Question ID</b>	MRDW1058000	
<b>Question</b>	<b>Question Type</b>	<b>Legislative Requirement</b>
Do operators and maintenance personnel have ready access to operations and maintenance manuals?	Legislative	SDWA   O. Reg. 128/04   28
<b>Observation</b>		
Operators and maintenance personnel had ready access to operations and maintenance manuals.		

<b>Question ID</b>	MRDW1063000	
<b>Question</b>	<b>Question Type</b>	<b>Legislative Requirement</b>

For every required operational test and for every required sample, is a record made of the date, time, location, name of the person conducting the test and result of the test?	Legislative	SDWA   O. Reg. 170/03   6-10   (1)
<b>Observation</b>		
For every required operational test and every required sample, a record was made of the date, time, location, name of the person conducting the test and result of the test.		

<b>Question ID</b>	MRDW1064000	
<b>Question</b>	<b>Question Type</b>	<b>Legislative Requirement</b>
Did the operator-in-charge ensure that records were maintained of all adjustments made to the processes within his or her responsibility?	Legislative	SDWA   O. Reg. 128/04   26   (2)
<b>Observation</b>		
The operator-in-charge ensured that records were maintained of all adjustments made to the processes within his or her responsibility.		

<b>Question ID</b>	MRDW1065000	
<b>Question</b>	<b>Question Type</b>	<b>Legislative Requirement</b>
Are logs and other record keeping mechanisms available for at least five (5) years?	Legislative	SDWA   O. Reg. 128/04   27   (6)
<b>Observation</b>		
Logs or other record keeping mechanisms were available for at least five (5) years.		

<b>Question ID</b>	MRDW1059000	
<b>Question</b>	<b>Question Type</b>	<b>Legislative Requirement</b>
Do the operations and maintenance manuals contain plans, drawings and process descriptions sufficient for the safe and efficient operation of the system?	Legislative	SDWA   O. Reg. 128/04   28
<b>Observation</b>		
The operations and maintenance manuals contained plans, drawings and process descriptions sufficient for the safe and efficient operation of the system.		
The Operations Manual appears to be current and comprehensive. It is recommended that the policies and procedures in this manual continue to be reviewed on a regular basis to ensure continued accuracy.		

<b>Question ID</b>	MRDW1060000	
<b>Question</b>	<b>Question Type</b>	<b>Legislative Requirement</b>
Do the operations and maintenance manuals meet the	Legislative	SDWA   31   (1)

requirements of the DWWP and MDWL issued under Part V of the SDWA?		
<b>Observation</b>		
The operations and maintenance manuals met the requirements of the Drinking Water Works Permit and Municipal Drinking Water Licence issued under Part V of the SDWA.		

<b>Question ID</b>	MRDW1061000	
<b>Question</b>	<b>Question Type</b>	<b>Legislative Requirement</b>
Are logbooks properly maintained and contain the required information?	Legislative	SDWA   O. Reg. 128/04   27   (1), SDWA   O. Reg. 128/04   27   (2), SDWA   O. Reg. 128/04   27   (3), SDWA   O. Reg. 128/04   27   (4), SDWA   O. Reg. 128/04   27   (5), SDWA   O. Reg. 128/04   27   (6), SDWA   O. Reg. 128/04   27   (7)
<b>Observation</b>		
Logbooks were properly maintained and contained the required information.		
The log sheets appear to be properly maintained with the required information. The OIC has been designated to be the on-call operator; this schedule is available at the municipal office.		

<b>Question ID</b>	MRDW1062000	
<b>Question</b>	<b>Question Type</b>	<b>Legislative Requirement</b>
Do records or other record keeping mechanisms confirm that operational testing not performed by continuous monitoring equipment is being done by a certified operator, water quality analyst, or person who meets the requirements of O. Reg. 170/03 7-5?	Legislative	SDWA   O. Reg. 170/03   7-5
<b>Observation</b>		
Records or other record keeping mechanisms confirmed that operational testing not performed by continuous monitoring equipment was being done by a certified operator, water quality analyst, or person who suffices the requirements of O. Reg. 170/03 7-5.		

<b>Question ID</b>	MRDW1066000	
<b>Question</b>	<b>Question</b>	<b>Legislative</b>

	Type	Requirement
Is spill containment provided for process chemicals and standby power generator fuel?	BMP	Not Applicable
<b>Observation</b>		
Spill containment was provided for process chemicals and/or standby power generator fuel.		

<b>Question ID</b>	MRDW1067000	
Question	Question Type	Legislative Requirement
Are clean-up equipment and materials in place for the clean up of spills?	BMP	Not Applicable
<b>Observation</b>		
Clean-up equipment and materials were in place for the clean up of spills.		

<b>Question ID</b>	MRDW1068000	
Question	Question Type	Legislative Requirement
If available, are standby power generators tested under normal load conditions?	BMP	Not Applicable
<b>Observation</b>		
Standby power generators were tested under normal load conditions.		

<b>Question ID</b>	MRDW1069000	
Question	Question Type	Legislative Requirement
Are all storage facilities completely covered and secure?	BMP	Not Applicable
<b>Observation</b>		
All storage facilities were completely covered and secure.		

<b>Question ID</b>	MRDW1070000	
Question	Question Type	Legislative Requirement
Are air vents and overflows associated with reservoirs and elevated storage structures equipped with screens?	BMP	Not Applicable
<b>Observation</b>		
Air vents and overflows associated with reservoirs and elevated storage structures were equipped with screens.		

<b>Question ID</b>	MRDW1071000	
Question	Question Type	Legislative Requirement

Has the owner provided security measures to protect components of the drinking water system?	BMP	Not Applicable
<b>Observation</b>		
The owner had provided security measures to protect components of the drinking water system.		
The treatment plant is equipped with a steel entry door with keyed and alarmed access restricted to municipal staff. The wells are all located on-site in concrete, locked well tiles.		

<b>Question ID</b>	MRDW1072000	
<b>Question</b>	<b>Question Type</b>	<b>Legislative Requirement</b>
Has the owner and/or operating authority undertaken efforts to promote water conservation and reduce water losses in their system?	BMP	Not Applicable
<b>Observation</b>		
The owner and/or operating authority undertook efforts to promote water conservation and reduce water losses in their system.		
Municipal water restrictions By-Law - #21-99 regulates lawn and garden watering. Restrictions are outlined to allow water use for even numbered houses on even days and odd numbered houses on odd days between the hours of 7am to 9am and 7pm to 9pm.		

<b>Question ID</b>	MRDW1073000	
<b>Question</b>	<b>Question Type</b>	<b>Legislative Requirement</b>
Has the overall responsible operator been designated for all subsystems which comprise the drinking water system?	Legislative	SDWA   O. Reg. 128/04   23   (1)
<b>Observation</b>		
The overall responsible operator has been designated for each subsystem.		
At the time of this inspection, ORO services were provided by GSS Engineering Consultants Ltd. ORO services were expected to revert to the municipality in August of 2021.		

<b>Question ID</b>	MRDW1074000	
<b>Question</b>	<b>Question Type</b>	<b>Legislative Requirement</b>
Have operators in charge been designated for all subsystems for which comprise the drinking water system?	Legislative	SDWA   O. Reg. 128/04   25   (1)
<b>Observation</b>		
Operators-in-charge had been designated for all subsystems which comprised the drinking water system.		
The OIC is designated as the operator on-call for that time period. The schedule is maintained at		

the municipal office.

<b>Question ID</b>	MRDW1075000	
<b>Question</b>	<b>Question Type</b>	<b>Legislative Requirement</b>
Do all operators possess the required certification?	Legislative	SDWA   O. Reg. 128/04   22
<b>Observation</b>		
All operators possessed the required certification.		
The Owner is reminded that there are a few licences that expire in 2021.		

<b>Question ID</b>	MRDW1076000	
<b>Question</b>	<b>Question Type</b>	<b>Legislative Requirement</b>
Do only certified operators make adjustments to the treatment equipment?	Legislative	SDWA   O. Reg. 170/03   1-2   (2)
<b>Observation</b>		
Only certified operators made adjustments to the treatment equipment.		
During the time period reviewed, Operators were found to have the appropriate licencing for all recorded actions.		

<b>Question ID</b>	MRDW1078000	
<b>Question</b>	<b>Question Type</b>	<b>Legislative Requirement</b>
In instances where the overall responsible operator was unable to act, was an adequately certified operator designated to act in place of the overall responsible operator?	Legislative	SDWA   O. Reg. 128/04   23   (1), SDWA   O. Reg. 128/04   23   (2), SDWA   O. Reg. 128/04   23   (3), SDWA   O. Reg. 128/04   23   (4), SDWA   O. Reg. 128/04   23   (5), SDWA   O. Reg. 128/04   23   (6), SDWA   O. Reg. 128/04   23   (7)
<b>Observation</b>		
An adequately licenced operator was designated to act in place of the overall responsible operator when the overall responsible operator was unable to act.		

<b>Question ID</b>	MRDW1099000	
<b>Question</b>	<b>Question Type</b>	<b>Legislative Requirement</b>
Do records show that all water sample results taken during the inspection review period did not exceed the values of tables 1, 2 and 3 of the Ontario Drinking Water Quality Standards (O. Reg.. 169/03)?	Information	Not Applicable
<b>Observation</b>		
Records did not show that all water sample results taken during the inspection review period did not exceed the values of tables 1, 2 and 3 of the Ontario Drinking Water Quality Standards (O. Reg. 169/03).		
All samples met the ODWQS with the exception of one (1) total coliform sample on August 9, 2020 with a result of 2 cfu/100 mL. This event was reported, as required.		

<b>Question ID</b>	MRDW1079000	
<b>Question</b>	<b>Question Type</b>	<b>Legislative Requirement</b>
Are all microbiological water quality monitoring requirements for raw water samples prescribed by legislation being met?	Legislative	SDWA   O. Reg. 170/03   10-4   (1),SDWA   O. Reg. 170/03   10-4   (2),SDWA   O. Reg. 170/03   10-4   (3)
<b>Observation</b>		
All microbiological water quality monitoring requirements for raw water samples were being met.		
Raw water samples from each well were found to be collected and analyzed weekly.		

<b>Question ID</b>	MRDW1081000	
<b>Question</b>	<b>Question Type</b>	<b>Legislative Requirement</b>
Are all microbiological water quality monitoring requirements for distribution samples being met?	Legislative	SDWA   O. Reg. 170/03   10-2   (1),SDWA   O. Reg. 170/03   10-2   (2),SDWA   O. Reg. 170/03   10-2   (3)
<b>Observation</b>		
All microbiological water quality monitoring requirements for distribution samples were being met.		

Distribution samples were found to be taken weekly with a total of either 11 or 12 samples taken during each month of the time period reviewed. Based on population, 10 distribution samples are required monthly to meet the requirements outlined in O.Reg. 170/03.

All samples were analyzed for the required total coliforms, E.coli and at least 25% of samples analyzed for heterotrophic plate count.

Question ID	MRDW1083000		
Question		Question Type	Legislative Requirement
Are all microbiological water quality monitoring requirements for treated samples being met?		Legislative	SDWA   O. Reg. 170/03   10-3
Observation			
All microbiological water quality monitoring requirements for treated samples were being met.			
From the data reviewed it was found that treated samples were taken weekly and analyzed for total coliforms, E. coli and heterotrophic plate count.			

Question ID	MRDW1084000		
Question	Question Type	Legislative Requirement	
Are all inorganic water quality monitoring requirements prescribed by legislation conducted within the required frequency?	Legislative	SDWA   O. Reg. 170/03   13-2	
Observation			
All inorganic water quality monitoring requirements prescribed by legislation were conducted within the required frequency.			
Inorganic sampling for parameters of Schedule 23, O.Reg. 170 is required every thirty-six (36) months for groundwater sources. The most current sample event occurred on November 19, 2018 for all three (3) wells. All sample results were within the prescribed limits.			
The next sample event required will be in November 2021.			

<b>Question ID</b>	MRDW1085000		
<b>Question</b>	<b>Question Type</b>	<b>Legislative Requirement</b>	
Are all organic water quality monitoring requirements prescribed by legislation conducted within the required frequency?	Legislative	SDWA   O. Reg. 170/03   13-4   (1),SDWA   O. Reg. 170/03   13-4   (2),SDWA   O. Reg. 170/03   13-4   (3)	

<b>Observation</b>
<p>All organic water quality monitoring requirements prescribed by legislation were conducted within the required frequency.</p> <p>Organic sampling for parameters of Schedule 24, O.Reg. 170 is required every thirty-six (36) months for groundwater sources. The most current sample event occurred on November 19, 2018 for all three (3) wells. All sample results were within the prescribed limits.</p> <p>The next sample event required will be in November 2021.</p>

Question ID	MRDW1086000	
Question	Question Type	Legislative Requirement
Are all haloacetic acid water quality monitoring requirements prescribed by legislation conducted within the required frequency and at the required location?	Legislative	SDWA   O. Reg. 170/03   13-6.1   (1),SDWA   O. Reg. 170/03   13-6.1   (2),SDWA   O. Reg. 170/03   13-6.1   (3), SDWA   O. Reg. 170/03   13-6.1   (4),SDWA   O. Reg. 170/03   13-6.1   (5),SDWA   O. Reg. 170/03   13-6.1   (6)
Observation		
All haloacetic acid water quality monitoring requirements prescribed by legislation are being conducted within the required frequency and at the required location.		
Haloacetic acid (HAA) monitoring is being conducted in conjunction with THM sampling; the following were the sample dates within this time period reviewed.		
<ul style="list-style-type: none"><li>- August 10, 2020 (5.3 – 13.9 ug/L),</li><li>- November 9, 2020 (5.3 – 5.6 ug/L),</li><li>- February 8, 2021 (5.3 – 9.6 ug/L), and</li><li>- May 10, 2021 (5.3 – 5.3 ug/L).</li></ul>		
The Ontario Drinking Water Quality Standard (ODWQS) for haloacetic acids came into force on January 1, 2020 and is expressed as a running annual average of quarterly results. The HAA rolling average for this inspection period is 6.95 ug/L, well below the ODWQS of 80 ug/L.		

<b>Question ID</b>	MRDW1087000	
<b>Question</b>	<b>Question</b>	<b>Legislative</b>

	Type	Requirement
Have all trihalomethane water quality monitoring requirements prescribed by legislation been conducted within the required frequency and at the required location?	Legislative	SDWA   O. Reg. 170/03   13-6   (1)
<b>Observation</b>		
All trihalomethane water quality monitoring requirements prescribed by legislation were conducted within the required frequency and at the required location.		
<p>Trihalomethanes were sampled on the following dates within the time period reviewed:</p> <ul style="list-style-type: none"> <li>- August 10, 2020 (26 – 26 ug/L),</li> <li>- November 9, 2020 (19 – 25 ug/L),</li> <li>- February 8, 2021 (19 – 24 ug/L), and</li> <li>- May 10, 2021 (17 – 21 ug/L).</li> </ul> <p>The current rolling average is 22.125 ug/L, which is well below the ODWQS of 100 ug/L. All samples continue to be collected from a number of different locations in the distribution system which are likely to have an elevated potential for THM formation.</p>		

<b>Question ID</b>	MRDW1088000	
Question	Question Type	Legislative Requirement
Are all nitrate/nitrite water quality monitoring requirements prescribed by legislation conducted within the required frequency for the DWS?	Legislative	SDWA   O. Reg. 170/03   13-7
<b>Observation</b>		
All nitrate/nitrite water quality monitoring requirements prescribed by legislation were conducted within the required frequency for the DWS.		
<p>Nitrate and nitrite samples were found to be taken every three (3) months from each well. The sample dates were as follows:</p> <ul style="list-style-type: none"> <li>- August 10, 2020,</li> <li>- November 9, 2020,</li> <li>- February 8, 2021, and</li> <li>- May 10, 2021.</li> </ul>		

<b>Question ID</b>	MRDW1089000	
Question	Question Type	Legislative Requirement
Are all sodium water quality monitoring requirements prescribed by legislation conducted within the required frequency?	Legislative	SDWA   O. Reg. 170/03   13-8
<b>Observation</b>		
All sodium water quality monitoring requirements prescribed by legislation were conducted		

within the required frequency.

Sodium sampling is required every sixty (60) months; the most current sodium sample date was November 4, 2019 with results of 16.1 mg/L at Well #1/#2 and 12.5 mg/L at Well #3. These are below the O.Reg. 170/03 reporting limit of 20.0 mg/L.

The Operating Authority is reminded that the next 60-month sample will be required in November 2024.

<b>Question ID</b>	MRDW1090000	
<b>Question</b>	<b>Question Type</b>	<b>Legislative Requirement</b>
Where fluoridation is not practiced, are all fluoride water quality monitoring requirements prescribed by legislation conducted within the required frequency?	Legislative	SDWA   O. Reg. 170/03   13-9
<b>Observation</b>		
All fluoride water quality monitoring requirements prescribed by legislation were conducted within the required frequency.		
Fluoride sampling is required every sixty (60) months. The last sample event reported was on November 4, 2019 with a result of 0.41 mg/L at Well #1/#2 and 0.72 mg/L at Well #3, which are within the prescribed limits of 1.5 mg/L.		
The Operating Authority is reminded that the next 60-month sample will be required in November 2024.		

<b>Question ID</b>	MRDW1092000	
<b>Question</b>	<b>Question Type</b>	<b>Legislative Requirement</b>
Has the owner ensured that water samples are taken at the prescribed location?	Legislative	SDWA   O. Reg. 170/03   6-2
<b>Observation</b>		
The owner ensured that water samples were taken at the prescribed location.		
Raw and treated water samples continue to be taken from dedicated sample taps in the pump house. Distribution water samples are taken at numerous locations throughout the system.		

<b>Question ID</b>	MRDW1093000	
<b>Question</b>	<b>Question Type</b>	<b>Legislative Requirement</b>
If the owner is required to conduct sampling under Schedule 13 of O. Reg. 170/03, have they increased the frequency of monitoring for any Schedule 13-2 or 13-4 parameter(s) as a result of having exceeded half the value of an applicable	Legislative	SDWA   O. Reg. 170/03   13-5   (1),SDWA   O. Reg. 170/03   13-

ODWQS?		5   (2)
<b>Observation</b>		
<p>The owner was required to increase frequency of monitoring as a result of having exceeded half the value of an applicable ODWQS of a Schedule 13-2 or 13-4 parameter(s) and that increased monitoring was conducted.</p> <p>During the last inspection (July 2020) it was found that increased sampling for arsenic was required. Additional sampling occurred on August 10, 2020 and continued on November 11, 2020, February 16, 2021 and May 10, 2021. All results were below the half MAC of 5 ug/L for arsenic.</p>		

<b>Question ID</b>	MRDW1094000	
<b>Question</b>	<b>Question Type</b>	<b>Legislative Requirement</b>
Are all water quality monitoring requirements imposed by the MDWL and DWWP being met?	Legislative	SDWA   31   (1)
<b>Observation</b>		
<p>All water quality monitoring requirements imposed by the MDWL or DWWP issued under Part V of the SDWA were being met.</p> <p>Additional water quality monitoring requirements for residue management are outlined in Schedule C of the Municipal Drinking Water Licence. Filter backwash total suspended solids and free chlorine residuals are tested monthly to meet these requirements. The annual average total suspended solids was less than the 25 mg/L limit at 4 mg/L (2020 and 2021) and the maximum free chlorine residual was less than 0.02 mg/L for the time period reviewed.</p>		

<b>Question ID</b>	MRDW1095000	
<b>Question</b>	<b>Question Type</b>	<b>Legislative Requirement</b>
Have all lead sampling requirements prescribed by Schedule 15.1 of O.R. 170/03 been met?	Legislative	SDWA   O. Reg. 170/03   15.1-10, SDWA   O. Reg. 170/03   15.1-4   (1),SDWA   O. Reg. 170/03   15.1-5   (1), SDWA   O. Reg. 170/03   15.1-5   (10),SDWA   O. Reg. 170/03   15.1-5   (11), SDWA   O. Reg. 170/03   15.1-5   (12),SDWA   O. Reg. 170/03

		15.1-5   (2), SDWA   O. Reg. 170/03   15.1-5   (3),SDWA   O. Reg. 170/03   15.1-5   (4), SDWA   O. Reg. 170/03   15.1-5   (5),SDWA   O. Reg. 170/03   15.1-5   (6), SDWA   O. Reg. 170/03   15.1-5   (7),SDWA   O. Reg. 170/03   15.1-5   (8), SDWA   O. Reg. 170/03   15.1-5   (9),SDWA   O. Reg. 170/03   15.1-7   (1), SDWA   O. Reg. 170/03   15.1-7   (2),SDWA   O. Reg. 170/03   15.1-7   (3), SDWA   O. Reg. 170/03   15.1-7   (4),SDWA   O. Reg. 170/03   15.1-9   (1), SDWA   O. Reg. 170/03   15.1-9   (2),SDWA   O. Reg. 170/03   15.1-9   (3), SDWA   O. Reg. 170/03   15.1-9   (4),SDWA   O. Reg. 170/03   15.1-9   (5), SDWA   O. Reg. 170/03   15.1-9   (6),SDWA   O. Reg. 170/03   15.1-9   (7), SDWA   O. Reg. 170/03   15.1-9
--	--	--

		(8),SDWA   O. Reg. 170/03   15.1-9   (9)
<b>Observation</b>		
All sampling requirements for lead prescribed by schedule 15.1 of O. Reg. 170/03 were being met.		

<b>Question ID</b>	MRDW1096000	
<b>Question</b>	<b>Question Type</b>	<b>Legislative Requirement</b>
Do records confirm that chlorine residual tests are being conducted at the same time and at the same location that microbiological samples are obtained?	Legislative	SDWA   O. Reg. 170/03   6-3   (1)
<b>Observation</b>		
Records confirmed that chlorine residual tests were being conducted at the same time and at the same location that microbiological samples were obtained.		

<b>Question ID</b>	MRDW1097000	
<b>Question</b>	<b>Question Type</b>	<b>Legislative Requirement</b>
If the drinking water system obtains water from a ground water source, is turbidity being tested at least once every month from each well that is supplying water to the system?	Legislative	SDWA   O. Reg. 170/03   7-3   (1.1)
<b>Observation</b>		
Turbidity was being tested at least once every month from each well that is supplying water to the system.		

<b>Question ID</b>	MRDW1098000	
<b>Question</b>	<b>Question Type</b>	<b>Legislative Requirement</b>
Has the owner indicated that the required records are kept and will be kept for the required time period?	Legislative	SDWA   O. Reg. 170/03   13   (1), SDWA   O. Reg. 170/03   13   (2), SDWA   O. Reg. 170/03   13   (3)
<b>Observation</b>		
The owner indicated that the required records are kept and will be kept for the required time period.		

<b>Question ID</b>	MRDW1100000	
<b>Question</b>	<b>Question Type</b>	<b>Legislative Requirement</b>

Did any reportable adverse/exceedance conditions occur during the inspection period?	Information	Not Applicable
<b>Observation</b>		
<p>There were reportable adverse/exceedances during the inspection period.</p> <p>The following adverse water quality event was reported during the time period reviewed.</p> <ul style="list-style-type: none"> <li>• AWQI #155020 on August 9, 2021 for a total coliform result of 2 cfu/100 mL.</li> </ul> <p>The appropriate corrective actions were found to be taken, including following instructions from the Public Health Unit.</p>		

<b>Question ID</b>	MRDW1101000	
<b>Question</b>	<b>Question Type</b>	<b>Legislative Requirement</b>
Have corrective actions (as per Schedule 17) been taken to address adverse conditions, including any other steps as directed by the Medical Officer of Health?	Legislative	SDWA   O. Reg. 170/03   17-1, SDWA   O. Reg. 170/03   17-10   (1),SDWA   O. Reg. 170/03   17-10   (2),SDWA   O. Reg. 170/03   17-11,SDWA   O. Reg. 170/03   17-12,SDWA   O. Reg. 170/03   17-13,SDWA   O. Reg. 170/03   17-14,SDWA   O. Reg. 170/03   17-2,SDWA   O. Reg. 170/03   17-3,SDWA   O. Reg. 170/03   17-4,SDWA   O. Reg. 170/03   17-5,SDWA   O. Reg. 170/03   17-6,SDWA   O. Reg. 170/03   17-9
<b>Observation</b>		
Corrective actions (as per Schedule 17) had been taken to address adverse conditions, including any other steps that were directed by the Medical Officer of Health.		

<b>Question ID</b>	MRDW1104000	
<b>Question</b>	<b>Question Type</b>	<b>Legislative Requirement</b>
Were all required verbal notifications of adverse water quality incidents immediately provided as per O. Reg. 170/03 16-6?	Legislative	SDWA   O. Reg. 170/03   16-6   (1),SDWA   O. Reg. 170/03   16-6   (2),SDWA   O. Reg. 170/03   16-6   (3),SDWA   O. Reg. 170/03   16-6   (3.1),SDWA   O. Reg. 170/03   16-6   (3.2),SDWA   O. Reg. 170/03   16-6   (4),SDWA   O. Reg. 170/03   16-6   (5),SDWA   O. Reg. 170/03   16-6   (6)
<b>Observation</b>		
All required notifications of adverse water quality incidents were immediately provided as per O. Reg. 170/03 16-6.		

<b>Question ID</b>	MRDW1105000	
<b>Question</b>	<b>Question Type</b>	<b>Legislative Requirement</b>
Were all required written notices of adverse water quality incidents provided as per O. Reg. 170/03 16-7?	Legislative	SDWA   O. Reg. 170/03   16-7   (1),SDWA   O. Reg. 170/03   16-7   (2),SDWA   O. Reg. 170/03   16-7   (3),SDWA   O. Reg. 170/03   16-7   (4),SDWA   O. Reg. 170/03   16-7   (5)
<b>Observation</b>		
All required written notices of adverse water quality incidents were provided as per O. Reg. 170/03 16-7.		

<b>Question ID</b>	MRDW1106000	
<b>Question</b>	<b>Question</b>	<b>Legislative</b>

	Type	Requirement
Were all required written notices of issue resolution provided as per O. Reg.. 170/03 16-9?	Legislative	SDWA   O. Reg. 170/03   16-9   (1),SDWA   O. Reg. 170/03   16-9   (2)
<b>Observation</b>		
In instances where written notice of issue resolution was required by regulation, the notice was provided as per O. Reg. 170/03 16-9.		

<b>Question ID</b>	MRDW1110000	
Question	Question Type	Legislative Requirement
Was an Annual Report containing the required information prepared by February 28 of the following year?	Legislative	SDWA   O. Reg. 170/03   11   (6)
<b>Observation</b>		
The Annual Report containing the required information was prepared by February 28th of the following year.		

<b>Question ID</b>	MRDW1111000	
Question	Question Type	Legislative Requirement
Have Summary Reports for municipal council been completed on time, include the required content, and distributed in accordance with the regulatory requirements?	Legislative	SDWA   O. Reg. 170/03   22-2   (1),SDWA   O. Reg. 170/03   22-2   (2),SDWA   O. Reg. 170/03   22-2   (3),SDWA   O. Reg. 170/03   22-2   (4)
<b>Observation</b>		
Summary Reports for municipal council were completed on time, included the required content, and were distributed in accordance with the regulatory requirements.		



**Ministry of the Environment, Conservation and Parks**  
**Drinking Water Inspection Report**

**APPENDIX A**

**STAKEHOLDERS**

# Key Reference and Guidance Material for Municipal Residential Drinking Water Systems

Many useful materials are available to help you operate your drinking water system. Below is a list of key materials owners and operators of municipal residential drinking water systems frequently use.

To access these materials online click on their titles in the table below or use your web browser to search for their titles. Contact the Ministry if you need assistance or have questions at 1-866-793-2588 or [waterforms@ontario.ca](mailto:waterforms@ontario.ca).

For more information on Ontario's drinking water visit [www.ontario.ca/drinkingwater](http://www.ontario.ca/drinkingwater)



PUBLICATION TITLE	PUBLICATION NUMBER
<b>FORMS:</b> Drinking Water System Profile Information Laboratory Services Notification Adverse Test Result Notification	012-2149E 012-2148E 012-4444E
Taking Care of Your Drinking Water: A Guide for Members of Municipal Councils	Website
Procedure for Disinfection of Drinking Water in Ontario	Website
Strategies for Minimizing the Disinfection Products Trihalomethanes and Haloacetic Acids	Website
Filtration Processes Technical Bulletin	Website
Ultraviolet Disinfection Technical Bulletin	Website
Guide for Applying for Drinking Water Works Permit Amendments, & License Amendments	Website
Certification Guide for Operators and Water Quality Analysts	Website
Guide to Drinking Water Operator Training Requirements	9802E
Community Sampling and Testing for Lead: Standard and Reduced Sampling and Eligibility for Exemption	Website
Drinking Water System Contact List	7128E01
Ontario's Drinking Water Quality Management Standard - Pocket Guide	Website
Watermain Disinfection Procedure	Website
List of Licensed Laboratories	Website

# Principaux guides et documents de référence sur les réseaux résidentiels municipaux d'eau potable

De nombreux documents utiles peuvent vous aider à exploiter votre réseau d'eau potable. Vous trouverez ci-après une liste de documents que les propriétaires et exploitants de réseaux résidentiels municipaux d'eau potable utilisent fréquemment. Pour accéder à ces documents en ligne, cliquez sur leur titre dans le tableau ci-dessous ou faites une recherche à l'aide de votre navigateur Web. Communiquez avec le ministère au 1-866-793-2588, ou encore à [waterforms@ontario.ca](mailto:waterforms@ontario.ca) si vous avez des questions ou besoin d'aide.



Pour plus de renseignements sur l'eau potable en Ontario, consultez le site [www.ontario.ca/eaupotable](http://www.ontario.ca/eaupotable)

TITRE DE LA PUBLICATION	NUMÉRO DE PUBLICATION
Renseignements sur le profil du réseau d'eau potable	012-2149F
Avis de demande de services de laboratoire	012-2148F
Avis de résultats d'analyse insatisfaisants et de règlement des problèmes	012-4444F
Prendre soin de votre eau potable - Un guide destiné aux membres des conseils municipaux	Site Web
Marche à suivre pour désinfecter l'eau potable en Ontario	Site Web
Stratégies pour minimiser les trihalométhanes et les acides haloacétiques de sous-produits de désinfection	Site Web
Filtration Processes Technical Bulletin (en anglais seulement)	Site Web
Ultraviolet Disinfection Technical Bulletin (en anglais seulement)	Site Web
Guide de présentation d'une demande de modification du permis d'aménagement de station de production d'eau potable	Site Web
Guide sur l'accréditation des exploitants de réseaux d'eau potable et des analystes de la qualité de l'eau de réseaux d'eau potable	Site Web
Guide sur les exigences relatives à la formation des exploitants de réseaux d'eau potable	9802F
Échantillonnage et analyse du plomb dans les collectivités : échantillonnage normalisé ou réduit et admissibilité à l'exemption	Site Web
Liste des personnes-ressources du réseau d'eau potable	Site Web
L'eau potable en Ontario - Norme de gestion de la qualité - Guide de poche	Site Web
Procédure de désinfection des conduites principales	Site Web
Laboratoires autorisés	Site Web



**Ministry of the Environment, Conservation and Parks  
Drinking Water Inspection Report**

**APPENDIX B**

**INSPECTION SUMMARY RATING RECORD  
(to follow)**

**APPENDIX F**

PERMIT TO TAKE WATER

**PERMIT TO TAKE WATER**

Ground Water

NUMBER 3655-A3RPJL

*Pursuant to Section 34.1 of the Ontario Water Resources Act, R.S.O. 1990 this Permit To Take Water is hereby issued to:*

The Corporation of the Municipality of Arran-Elderslie  
1925 County Road 10  
Chesley, Ontario, N0G 1L0  
Canada

*For the water*

*taking from:* CPW#1, CPW#2, CPW#3

*Located at:* Lot 32, Concession 2, Geographic Township of Elderslie  
Arran-Elderslie, County of Bruce

*For the purposes of this Permit, and the terms and conditions specified below, the following definitions apply:*

**DEFINITIONS**

- (a) "Director" means any person appointed in writing as a Director pursuant to section 5 of the OWRA for the purposes of section 34.1, OWRA.
- (b) "Provincial Officer" means any person designated in writing by the Minister as a Provincial Officer pursuant to section 5 of the OWRA.
- (c) "Ministry" means Ontario Ministry of the Environment and Climate Change.
- (d) "District Office" means the Owen Sound District Office.
- (e) "Permit" means this Permit to Take Water No. 3655-A3RPJL including its Schedules, if any, issued in accordance with Section 34.1 of the OWRA.
- (f) "Permit Holder" means The Corporation of the Municipality of Arran-Elderslie.
- (g) "OWRA " means the *Ontario Water Resources Act*, R.S.O. 1990, c. O. 40, as amended.

*You are hereby notified that this Permit is issued subject to the terms and conditions outlined below:*

## **TERMS AND CONDITIONS**

### **1. Compliance with Permit**

- 1.1 Except where modified by this Permit, the water taking shall be in accordance with the application for this Permit To Take Water, dated July 28, 2015 and signed by Scott McLeod, and all Schedules included in this Permit.
- 1.2 The Permit Holder shall ensure that any person authorized by the Permit Holder to take water under this Permit is provided with a copy of this Permit and shall take all reasonable measures to ensure that any such person complies with the conditions of this Permit.
- 1.3 Any person authorized by the Permit Holder to take water under this Permit shall comply with the conditions of this Permit.
- 1.4 This Permit is not transferable to another person.
- 1.5 This Permit provides the Permit Holder with permission to take water in accordance with the conditions of this Permit, up to the date of the expiry of this Permit. This Permit does not constitute a legal right, vested or otherwise, to a water allocation, and the issuance of this Permit does not guarantee that, upon its expiry, it will be renewed.
- 1.6 The Permit Holder shall keep this Permit available at all times at or near the site of the taking, and shall produce this Permit immediately for inspection by a Provincial Officer upon his or her request.
- 1.7 The Permit Holder shall report any changes of address to the Director within thirty days of any such change. The Permit Holder shall report any change of ownership of the property for which this Permit is issued within thirty days of any such change. A change in ownership in the property shall cause this Permit to be cancelled.

### **2. General Conditions and Interpretation**

- 2.1 Inspections  
The Permit Holder must forthwith, upon presentation of credentials, permit a Provincial Officer to carry out any and all inspections authorized by the OWRA, the *Environmental Protection Act*, R.S.O. 1990, the *Pesticides Act*, R.S.O. 1990, or the *Safe Drinking Water Act*, S. O. 2002.
- 2.2 Other Approvals  
The issuance of, and compliance with this Permit, does not:  
  - (a) relieve the Permit Holder or any other person from any obligation to comply with any other applicable legal requirements, including the provisions of the *Ontario Water Resources Act*, and

the *Environmental Protection Act* , and any regulations made thereunder; or

(b) limit in any way any authority of the Ministry, a Director, or a Provincial Officer, including the authority to require certain steps be taken or to require the Permit Holder to furnish any further information related to this Permit.

### 2.3 Information

The receipt of any information by the Ministry, the failure of the Ministry to take any action or require any person to take any action in relation to the information, or the failure of a Provincial Officer to prosecute any person in relation to the information, shall not be construed as:

(a) an approval, waiver or justification by the Ministry of any act or omission of any person that contravenes this Permit or other legal requirement; or

(b) acceptance by the Ministry of the information's completeness or accuracy.

### 2.4 Rights of Action

The issuance of, and compliance with this Permit shall not be construed as precluding or limiting any legal claims or rights of action that any person, including the Crown in right of Ontario or any agency thereof, has or may have against the Permit Holder, its officers, employees, agents, and contractors.

### 2.5 Severability

The requirements of this Permit are severable. If any requirements of this Permit, or the application of any requirements of this Permit to any circumstance, is held invalid or unenforceable, the application of such requirements to other circumstances and the remainder of this Permit shall not be affected thereby.

### 2.6 Conflicts

Where there is a conflict between a provision of any submitted document referred to in this Permit, including its Schedules, and the conditions of this Permit, the conditions in this Permit shall take precedence.

## 3. **Water Takings Authorized by This Permit**

### 3.1 **Expiry**

This Permit expires on **September 29, 2025**. No water shall be taken under authority of this Permit after the expiry date.

### 3.2 Amounts of Taking Permitted

The Permit Holder shall only take water from the source, during the periods and at the rates and amounts of taking specified in Table A. Water takings are authorized only for the purposes specified in Table A.

**Table A**

	Source Name / Description:	Source: Type:	Taking Specific Purpose:	Taking Major Category:	Max. Taken per Minute (litres):	Max. Num. of Hrs Taken per Day:	Max. Taken per Day (litres):	Max. Num. of Days Taken per Year:	Zone/ Easting/ Northing:
1	CPW#1	Well	Municipal	Water Supply	1,250	24	1,800,216	365	17 492863 4904899
		Drilled							
2	CPW#2	Well	Municipal	Water Supply	1,477	24	2,127,528	365	17 492848 4904912
		Drilled							
3	CPW#3	Well	Municipal	Water Supply	2,046	24	2,948,240	365	17 493043 4904772
		Drilled							
						<b>Total Taking:</b>	6,875,984		

- 3.3 Notwithstanding Table A, this Permit only allows for the combined taking of water from CPW1 and CPW2 @ 2273 L/min or (3273120 L/day) for a period of 120 days. Following this period the combined taking must not exceed 1818 L/min for the balance of the year.

#### 4. Monitoring

- 4.1 The Permit Holder shall maintain a record of all water takings. This record shall include the dates of water takings, and the total measured amounts of water pumped per day for each day that water is taken under the authorization of this Permit. The Permit Holder shall keep all required records up to date and available at or near the site of the taking and shall produce the records immediately for inspection by a Provincial Officer upon his or her request. The total amounts of water pumped shall be measured using flow measuring device.
- 4.2 The Permit Holder shall measure and record static water levels in all production wells and observation wells (Victoria Park Well and TW3/91) on a monthly basis during the year.
- 4.3 The record of water takings required as per conditions 4.1 and 4.2 shall be submitted to the Ministry of the Environment Southwest Regional Office no later than 90 days prior to expiry of the permit or proposed amendment to support permit renewal or a permit amendment application.

#### 5. Impacts of the Water Taking

- 5.1 Notification  
The Permit Holder shall immediately notify the local District Office of any complaint arising from the taking of water authorized under this Permit and shall report any action which has been taken or is proposed with regard to such complaint. The Permit Holder shall immediately notify

the local District Office if the taking of water is observed to have any significant impact on the surrounding waters. After hours, calls shall be directed to the Ministry's Spills Action Centre at 1-800-268-6060.

5.2 For Groundwater Takings

If the taking of water is observed to cause any negative impact to other water supplies obtained from any adequate sources that were in use prior to initial issuance of a Permit for this water taking, the Permit Holder shall take such action necessary to make available to those affected, a supply of water equivalent in quantity and quality to their normal takings, or shall compensate such persons for their reasonable costs of so doing, or shall reduce the rate and amount of taking to prevent or alleviate the observed negative impact. Pending permanent restoration of the affected supplies, the Permit Holder shall provide, to those affected, temporary water supplies adequate to meet their normal requirements, or shall compensate such persons for their reasonable costs of doing so.

If permanent interference is caused by the water taking, the Permit Holder shall restore the water supplies of those permanently affected.

**6. Director May Amend Permit**

The Director may amend this Permit by letter requiring the Permit Holder to suspend or reduce the taking to an amount or threshold specified by the Director in the letter. The suspension or reduction in taking shall be effective immediately and may be revoked at any time upon notification by the Director. This condition does not affect your right to appeal the suspension or reduction in taking to the Environmental Review Tribunal under the *Ontario Water Resources Act*, Section 100 (4).

*The reasons for the imposition of these terms and conditions are as follows:*

1. Condition 1 is included to ensure that the conditions in this Permit are complied with and can be enforced.
2. Condition 2 is included to clarify the legal interpretation of aspects of this Permit.
3. Conditions 3 through 6 are included to protect the quality of the natural environment so as to safeguard the ecosystem and human health and foster efficient use and conservation of waters. These conditions allow for the beneficial use of waters while ensuring the fair sharing, conservation and sustainable use of the waters of Ontario. The conditions also specify the water takings that are authorized by this Permit and the scope of this Permit.

*In accordance with Section 100 of the Ontario Water Resources Act, R.S.O. 1990, you may by written Notice served upon me and the Environmental Review Tribunal within 15 days after receipt of this Notice, require a hearing by the Tribunal. Section 101 of the Ontario Water Resources Act, R.S.O. 1990, as amended, provides that the Notice requiring the hearing shall state:*

1. The portions of the Permit or each term or condition in the Permit in respect of which the hearing is required, and;
2. The grounds on which you intend to rely at the hearing in relation to each portion appealed.

*In addition to these legal requirements, the Notice should also include:*

3. The name of the appellant;
4. The address of the appellant;
5. The Permit to Take Water number;
6. The date of the Permit to Take Water;
7. The name of the Director;
8. The municipality within which the works are located;

*This notice must be served upon:*

*The Secretary  
Environmental Review Tribunal  
655 Bay Street, 15th Floor  
Toronto ON  
M5G 1E5  
Fax: (416) 326-5370  
Email: ERTTribunalsecretary@ontario.ca*

AND

*The Director, Section 34.1, Ministry of the  
Environment and Climate Change  
733 Exeter Rd  
London ON N6E 1L3  
Fax: (519) 873-5020*

***Further information on the Environmental Review Tribunal's requirements for an appeal can be obtained directly from the Tribunal:***

by Telephone at  
(416) 212-6349

Toll Free 1(866) 448-2248

by Fax at

(416) 326-5370

Toll Free 1(844) 213-3474

by e-mail at

www.ert.gov.on.ca

This Permit cancels and replaces Permit Number 8003-639PHB, issued on 2005/06/20.

Dated at London this 13th day of November, 2015.



Jason Lehouillier  
Director, Section 34.1  
*Ontario Water Resources Act* , R.S.O. 1990

### **Schedule A**

This Schedule “A” forms part of Permit To Take Water 3655-A3RPJL, dated November 13, 2015.